

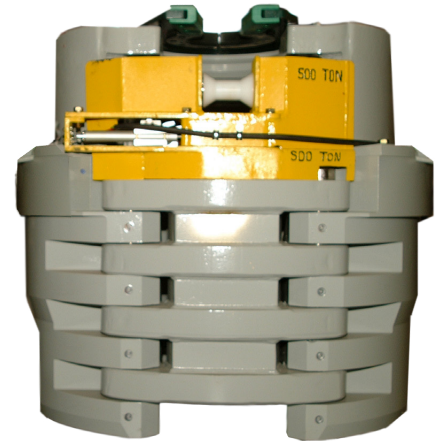
# Well Construction

## Frank's Tubular Running Services (TRS)

### RS-500™ Rotary Spider

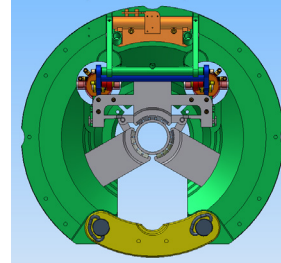
#### Features and benefits

- Rotary spider is suitable for running casing, completion tubing, or drill pipe; corrosion-resistant tubing can be run with Expro's slips and inserts
- Equipped with Expro's spider/elevator interlock system, which ensures the spider/elevator is properly set on the pipe before the companion tool is allowed to open
- Ability to accommodate multiple control lines typically encountered on high-tech completions
- Tool design enhances workplace safety by eliminating clutter on the rig floor
- Options for control line/umbilical protection including COBRA™ Control Line Manipulator Arm, Control Line Pusher Arm, and Rotating Control Line Sleeve
- Top cover rated for 150 tons for tapered string & washpipe operations without removing the spider from the rotary

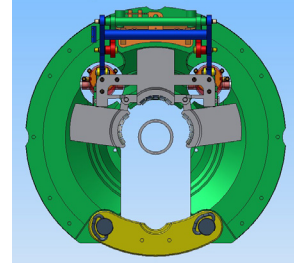


Specifications	
Rotary size	49-1/2" (1,257mm)
Weight	11,100 lbs (5,035 kgs) without slips
Dimensions	29-1/4" (743mm) into rotary, 18-3/8" (467mm) above rig floor, 52-5/16" (1,329mm) OD
Pipe range	4-1/2" - 13-1/2"
Rated capacity	500 tons (454 tonnes)
Air pressure required	70 psi (4.8 bar)

For more information, please contact your Expro representative or email: [wellconstruction@expro.com](mailto:wellconstruction@expro.com)



With slips in the "SET" position



With slips in the "UP" position