



Drilling Technologies

Expro provides unique drilling optimization technology for deviated wells, onshore ERD wells, onshore vertical wells and offshore wells drilled in some of the deepest waters in the world.

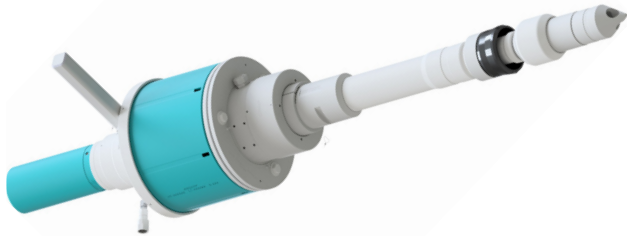
Our downhole drilling solutions help to reduce your non-productive time.

expro.com



Providing custom engineering and drilling technologies that enhance your wellbore integrity and reduce your drilling time.

VERSAFLO® Time Saver Series Casing and drill pipe flowback and circulation tool



Designed for circulation and flowback operations of both casing and drill pipe, **VERSAFLO® Time Saver Series** is primarily designed to work with drilling rigs equipped with top drive systems. The complete system incorporates a casing module connected to a drill pipe module with a special crossover sub.

Benefits

- Improves trip time
- Reduces mud contamination on the rig floor
- Reduces surge and swab
- Internal and external sealings options available

Harmonic Isolation Tool (HI TOOL®)



Vibration is typically the most common cause of (NPT) for the operator and suppliers of complex MWD/LWD equipment. The **HI TOOL®** is an on-bottom drilling tool designed to reduce vibration generated by the drill bit or drill string dynamics.

Benefits

- Reduces lateral vibration transmission in both directions
- Improves wellbore quality
- Improves drilling performance and overall productivity
- Reduces DHT Failures

Drill String Torque Reducer (DSTR™)

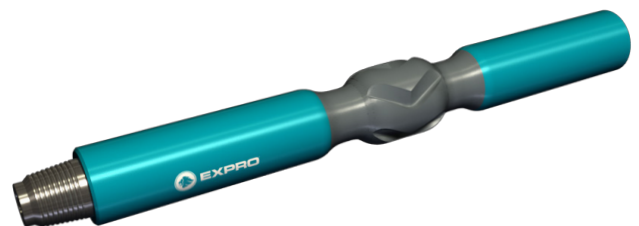


Intended for use in deviated wells where excessive rotary torque causes drilling and casing wear problems, the **Drill String Torque Reducer (DSTR™)** tool can reduce casing wear across the build section. For a given deviation profile, the applications program assists in maximizing the tool's performance by determining the deployment in the critical sections of the borehole.

Benefits

- Improves energy transfer to bit
- Improves wellbore integrity
- Reduces string slip-stick
- Reduces casing wear and reduces drill pipe fatigue

Cutting Bed Impeller (CBI™)



The **Cutting Bed Impeller (CBI™)** is a downhole drill string tool intended for use in deviated wells where excessive build-up of cuttings causes drilling problems, typically in hole angles greater than 30°. An integral drill string component, it consists of a short one-piece mandrel with no moving parts, and mechanical properties exceeding the specification of the drillpipe. Its hydraulic and mechanical dual acting mechanism removes cuttings beds inside the casing or in open hole.

Benefits

- Improves cuttings transport to surface
- Improves ECD
- Reduce risk of stuck pipe