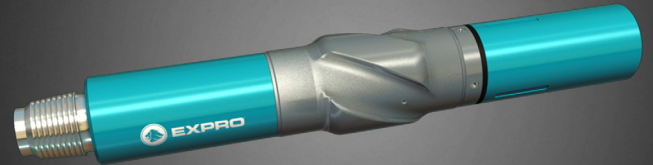


## Expro Excellence

# HI TOOL<sup>®</sup> optimizes drilling of lateral wells in Permian Basin

## Well Construction | Drilling Technologies



### Objectives and background

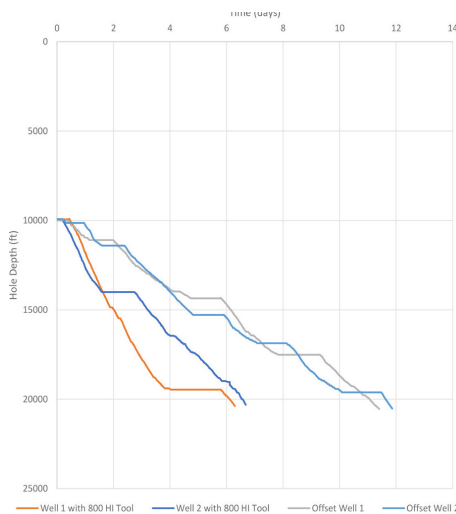
- A west Texas operator sought a solution to optimize drilling capabilities
- Expro had an established relationship with the customer, they were looking for an enhanced solution to the existing tool they were using. The current tool was axial and torsional and our lateral tool was a better fit for their applications

### Expro Excellence

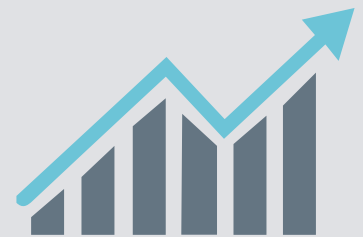
- For this application, two wells utilized Expro's 800 series HI TOOL<sup>®</sup> Harmonic Isolation Tool. The tool was placed above the RSS and MWD/LWD to protect these critical BHA components and support increased drilling parameters
- By reducing wear, the HI TOOL<sup>®</sup> extends the life of BHA components. It also allows the entire face of the bit to stay more directly engaged with the rock which results in a higher ROP
- Expro's HI TOOL<sup>®</sup> mitigates lateral vibrations at a competitive cost, this enabled the customer to drill faster and further. Our tool gives protection from lateral vibrations

### Value to the client

- The two wells utilizing the HI TOOL<sup>®</sup> were compared to two offset wells without any vibration mitigation strategies, with all wells operating within similar parameters. The wells with the HI TOOL<sup>®</sup> benefitted in multiple ways, including increased ROP, increased section length, reduced the number of trips, and reduced time to complete the lateral sections
- Benefits included:
  - o Increased ROP by an average of 39%
  - o Increased section length by an average of 4200ft
  - o Reduced the average number of trips by 2.5
  - o Wells with the HI TOOL<sup>®</sup> completed the operation an average of five days sooner
- Reduced operational time resulted in an emission reduction of 212 T CO<sub>2</sub>e
- The customer had significant cost savings associated with less rig time and less damage to the BHA components and they were able to reach



### Increased productivity



### Reduction of rig time



### Contact

For further information please contact:  
[wellconstruction@expro.com](mailto:wellconstruction@expro.com)  
 or visit  
[expro.com/wellconstruction](http://expro.com/wellconstruction)