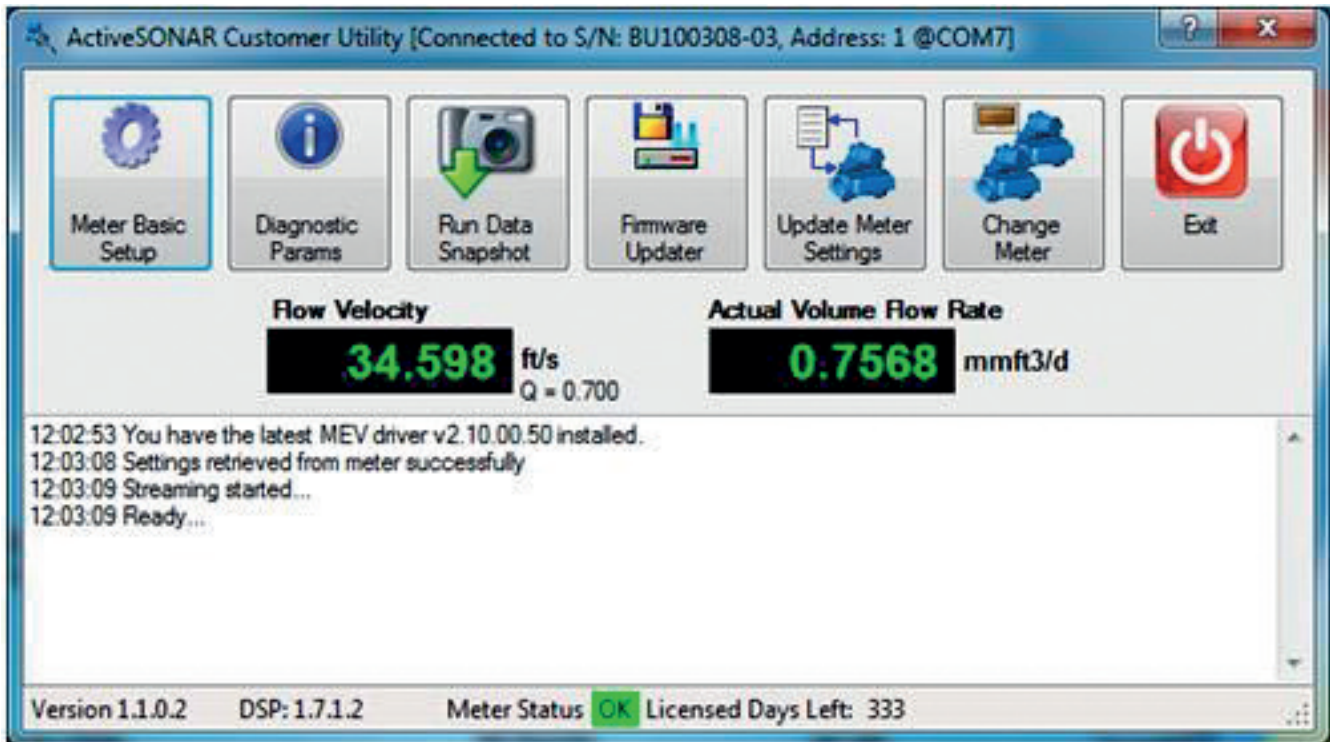


ActiveSONAR™ Customer Utility (ACU)



The ActiveSONAR™ Flow Meter includes two RS-485 Serial Ports, each of which can be used independently for interfacing to any system or application which supports the Modbus protocol.

In addition these ports can be used to provide additional internal meter information and diagnostic data which can be useful in system configuration and troubleshooting. The ActiveSONAR™ Customer Utility (ACU) runs on a user provided Windows computer to allow basic meter configuration and to extract diagnostic information.

ActiveSONAR™ Customer Utility (ACU) features

- Modify basic meter settings
- Display diagnostic parameters and retrieve diagnostic data from meter
- Update meter firmware
- Update meter configuration settings from file
- Communicate with single or multidrop meters
- Flexible licensing arrangements

Computer Requirements for ACU

- Intel-based computer running Windows XP or Windows 7
- At least 4GB Ram, 10GB free hard drive space
- Available USB port for ActiveSONAR™ Communications Interface