

Expro Excellence

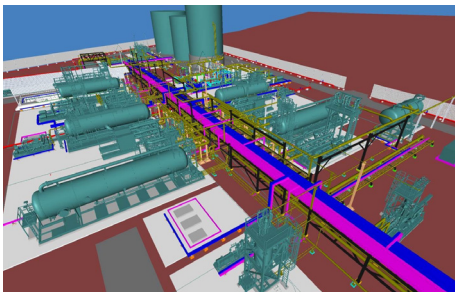
High production, fast track of 220,000 bpd EPF

Production systems



Customer challenges

- The client was working on a green field development and they wanted to centralise the production of existing wells and produce oil to a pipeline at the desired export quality. The resources and experience were not available to review the FEED study and deferred achieving the target completion date
- The client did not have the technical resources to properly evaluate the FEED study and contacted Expro to review and quote the proposed design and advise on what alternative solutions that might be considered
- The FEED study was overly complex and was a costly solution and the client wanted Expro to review the overall requirements for the development and to offer alternatives wherever possible
- Expro has a well established presence in the Sub Saharan Africa market and our proven track record for safety and operational uptime, the client reached out to us to quote against a FEED study previously completed by a third party. Our established presence in the region gave the client confidence that we would achieve the deliverables



Expro Excellence

- Expro designed the process facility to achieve a total of 150,000 BOPD and up to 70,000 BWPD. The flow would be equally split between the two parallel trains
- We offered a fast track solution for the design, procurement, fabrication, quality control and project management of modular, skidded packages complete with all structural, mechanical, and electrical interconnects. Our integrated solution was more attractive to the client than the original FEED study design which the client had contracted to an alternative vendor
- Expro's solution met the stringent environmental requirements for the safe and controlled discharge of produced water. Our design had zero continuous flaring of processed gas and water discharge was well within the legislative discharge limits

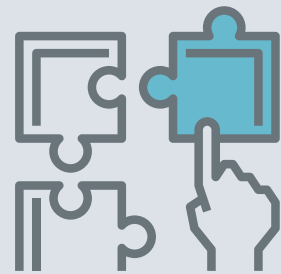
Value to the client

- Expro's modular package was of benefit to the client as it offered them a high degree of confidence and provided significant savings on the overall number of packages originally considered within the FEED study
- The centralised area of design and construction mitigated any COVID-19 schedule impacts with most of the work being carried out in the United Arab Emirates (UAE)
- Expro's proven track record for quality of delivery, a focus on safety and our operational uptime continues to showcase our abilities to be considered beyond an equipment sale provider, and through to the installation, commissioning, and O&M of the most complex facilities
- We worked directly with the client appointed third parties and allowed the client to have a hands-off approach to the day to day running of the project

Fast track



Integrated approach



Contact

For further information please contact:
production@exprogroup.com
 or visit
exprogroup.com/production