

# Fast Track Analysis Lab

**PVT to Production**



# Introduction

**From exploration and appraisal to production optimisation and enhancement, Expro's market leading modular laboratory system offers an in-country solution for all of your fluids sampling and analysis requirements.**

The Fast Track Analysis Lab can be deployed to site for a range of applications including:

- New frontier developments
- Acquired assets with no existing analysis facilities
- Temporary facilities for production enhancement on aging wells

## MARKET CHALLENGE

When developing an oilfield in a frontier location, new and additional challenges face the operator in order to commercialise the discovery. The lack of facilities and expertise available in-country can delay both the evaluation of the well and present challenges when production commences.

## CUSTOMER-DRIVEN SOLUTION

The Fast Track Analysis Lab can be rapidly deployed to site and adapted to the changing analysis requirements throughout the lifecycle of the well. Our highly trained and experienced personnel quickly and efficiently characterise the reservoir and produced fluids, and as production commences can conduct both routine and forensic analysis to optimise production.

# Specialised services

## Advanced analysis

Throughout the lifecycle of the well, the laboratory will be supported by Expro's fully equipped technical centres in the UK and Norway, with priority access to these facilities for the more detailed investigations into IOR/EOR, compatibility studies, scaling and water injection.



## Tailored evaluation

Establishing an analysis strategy during early field development enables a sound understanding of the produced fluids. Any unique analysis requirements can be identified early and integrated in the laboratory capabilities as the field develops. The laboratory's modular design allows flexibility in deployment, focussing on the needs and drivers of the customer.



## Personnel

Expro is committed to developing a local workforce and will provide the opportunity for the transfer of knowledge and expertise from our experienced to our local personnel. This includes exposure to a wide range of fluids and challenges through our network of laboratories in other locations. These processes help set the benchmark for quality and expertise in the developing local market.



## Safety and quality

Data is checked and verified by Expro's fully accredited technical centres. Procedures, risk assessments and metrology are controlled by our teams of experts to ensure the highest quality and safety standards are maintained across all operations.



# Analysis across the lifecycle of the well



## Early development

During early development the laboratory will focus on PVT analysis, providing top quality C36+ compositional analysis and PVT properties (Bo, saturation pressure, live density and viscosity). The results are qualified by a rigid calibration and quality assurance process controlled by Expro's central Fluids Analysis Centre. This allows construction of a robust equation of state (EOS) which can provide all of the PVT data required for fluid property evaluation.

- Gas and oil compositions (C36+)
- Physical properties (GLR, shrinkage, fluid density)
- Full PVT (CCE, viscosity, differential separator test)

## Commissioning and early production

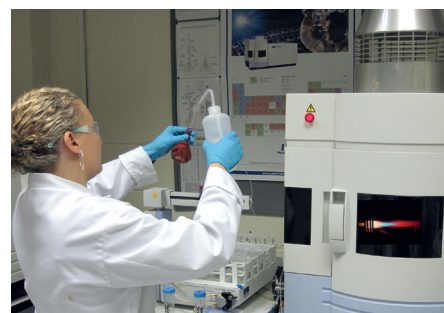
As the focus of the field development shifts to early production, the range of testing can expand with the deployment of specialised equipment. Test results will determine the likely production characteristics of the oil and gas, including the identification of any adverse properties such as wax and asphaltene formation.

- Gas and oil compositions (C36+)
- Wax studies
- Asphaltene deposition
- Water analysis and compatibility
- STO properties (density, kinematic viscosity, BS&W, wax content, salt content)

## Production

When the field begins to produce, the laboratory will be modified to optimise workflows. This will provide a higher volume and faster turnaround service for routine production monitoring tests including basic crude oil assays, export specification, water cut and viscosity profiles. Production water chemistry, corrosion monitoring, and environmental and biological monitoring can be offered at this stage along with the safe disposal of produced water.

- Gas and oil compositions (C36+)
- High volume monitoring of STO and gas properties (density, kinematic viscosity, water content, pour point, dynamic viscosity, BS&W, reid vapour pressure, H<sub>2</sub>S, souring studies, asphaltenes, wax content, salt content, emulsion studies)
- Water properties (chlorides, pH, resistivity, salinity, cation and anion analysis by ICP)
- Corrosion monitoring
- Environmental and bacteria monitoring





# EXPRO

---

For more information please contact:

**[fluids@exprogroup.com](mailto:fluids@exprogroup.com)**

or visit

**[www.exprogroup.com/fluids](http://www.exprogroup.com/fluids)**

---



To download our range of  
brochures please visit

**[exprogroup.com/brochures](http://exprogroup.com/brochures)**