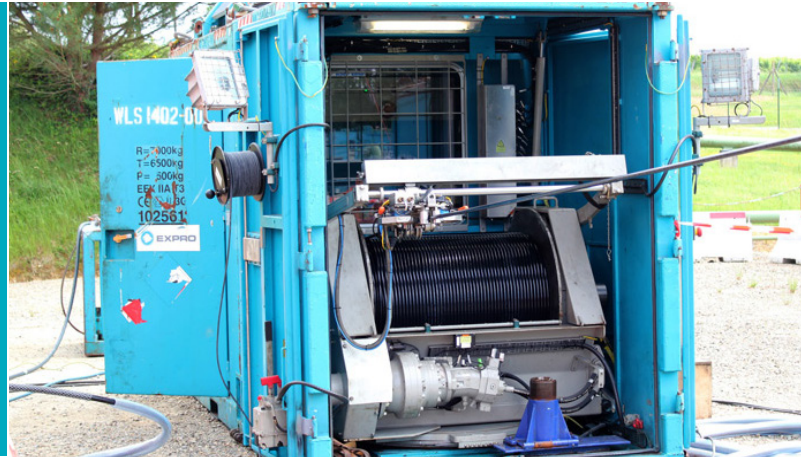


Expro Excellence

Expro runs memory camera on CoilHose operation

Well Intervention



Objectives and background

- The client approached Expro to attempt to fish out a probe which had been stuck within a 3,688" M1 plug for more than a month. The client had performed over 30 coiled tubing runs without being able to latch the fish. They had also run a camera without pumping capability previously, but the condition of the well fluids did not allow any clear photos
- Expro first ran a dummy of the camera, confirming well access plus cleaning the top of the fish. After this Expro ran the CoilHose in the hole to obtain a high resolution image of the fish while circulating clean fluid over the camera lens. This gave our client a first-hand look of what's going on in the well, and Expro's fishing crew was able to latch the fish on the first attempt. Unfortunately the probe turned out to be difficult to retrieve on slickline. The client then asked Expro to carry out a specialised slickline and heavy duty fishing operation to retrieve the stuck plug

Expro Excellence

- Expro gave the client knowledge on the condition of the fish by recording a video inside the wellbore, and also demonstrated good service delivery by several latches onto the fish with slickline. They have now been trusted with creating a fishing tool made for this job, and return with heavy fishing services to pull the probe
- Expro developed a bespoke tool for this operation to meet the customer's specifications

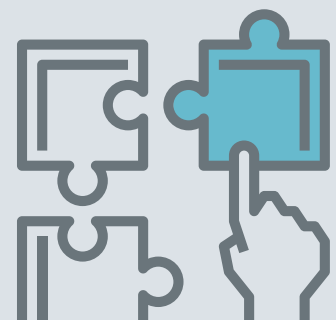
Value to the client

- First CoilHose run for Expro and the client was the first in their region to use this new technology
- Successful dummy run and memory camera run on CoilHose
- Delivering factual information on the condition of the fish to the client
- Demonstrating Expro's collaborative approach with three product lines in one operation. The three product lines were CoilHose, Well Test, and Well Intervention

Bespoke solution



Integrated approach



Contact

For further information please contact:
wellintervention@exprogroup.com
 or visit
exprogroup.com/wellintervention