



EXPRO®



Energy transition

Citizen of the world

Citizen of the world

Enhance today. Maximize efficiency. Transform tomorrow.

Expro will always put the right people forward to do the right work for the right customers in the right places. But we have a duty to go far beyond this.

We want to be more **relevant** in today's world. We must reduce our own environmental impact. Our industry is part of the solution to address a lower carbon future – and **we are committed to playing our part.**

We are advancing and developing technologies to achieve this and participate in maximizing recovery. Our focus and commitment on innovation, efficiency, and digitalization better informs our customers, enables operational excellence and facilitates more timely and informed decisions.

Ultimately making an impact on the future of each and every one of us.



Citizen of the world - Our ESG commitment

Taking pride in being a responsible and transparent business that operates a clear set of environmental, social and governance principles.

Environmental

Our Planet

Achieve net zero CO₂e emissions by 2050 and a 50% reduction of carbon intensity by 2030

Our Services

Adopting and advancing technologies and adapting our services to participate in the energy transition and deliver on sustainability objectives of the Company and its clients

Social

Our Communities

Engagement with local communities to reduce the impact of our operations and to positively contribute to their environment where possible

Our People

Build on industry leading safety records; Attract, develop and retain the best talent to sustain a diverse, inclusive and performance-oriented working environment

Governance

Our Structure

No dual class shares, classified board, poison pill or supermajority provisions; Commitment to regular Board refreshment and Board diversity

Our Commitment

Performance based executive compensation in line with peers and aligns with all stakeholder interests to create strong returns

OUR VALUES



People

At the heart of our success. We recognize the value of our people and are committed to providing the working environment, encouragement and personal development to achieve our goals.

Performance

Getting it right first time, every time. We are passionate about safely delivering excellent quality customer service. We embrace teamwork, individually and collectively assuming responsibility for delivering the highest value to all our stakeholders.

Planet

We are committed to reducing our own environmental impact. We will play a relevant role in the energy transition towards a lower carbon future. We are also determined to make a positive impact wherever we operate.

Partnerships

We listen to our customers and build relationships to understand their needs. We innovate with purpose to apply, adapt or develop our technologies and services to provide timely and effective solutions.

OUR BEHAVIORS



Think planet

We commit to reduce our environmental footprint and improve our local impact.

Be accountable

We take responsibility for and pride in our actions.

Champion safety

We strive to be at the forefront of safety, in everything we do.

Embrace teamwork

We work together to deliver an excellent service – we coach and learn from others.

Drive innovation

We inspire and innovate with purpose to seek out solutions for every challenge.

Partner customers

We build and sustain high value partnerships with our customers and colleagues.

Communicate effectively

Effective communication is key. We share information and respect everyone we work with.

Deliver quality

We focus on delivering operational excellence to all our stakeholders.

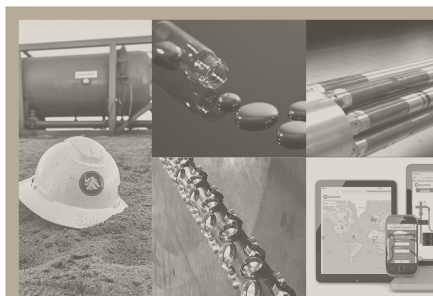


A balanced portfolio across the lifecycle



Well Construction

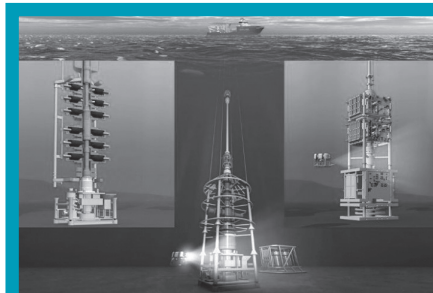
Innovative, high value, low risk well construction solutions provider with a focus on operational efficiency and well integrity.



Well Flow Management

Proficiently gathering valuable well and reservoir data, with the utmost regard for well-site safety and environmental impact.

Fast-track cost-effective, early field production, optimization and enhancement systems.



Subsea Well Access

Ensuring safe, efficient and cost effective subsea well access systems across the entire lifecycle of the well.



Well Intervention and Integrity

Deployment, insight and enhancement solutions to enable reservoir and well surveillance, production optimization and asset integrity assurance.

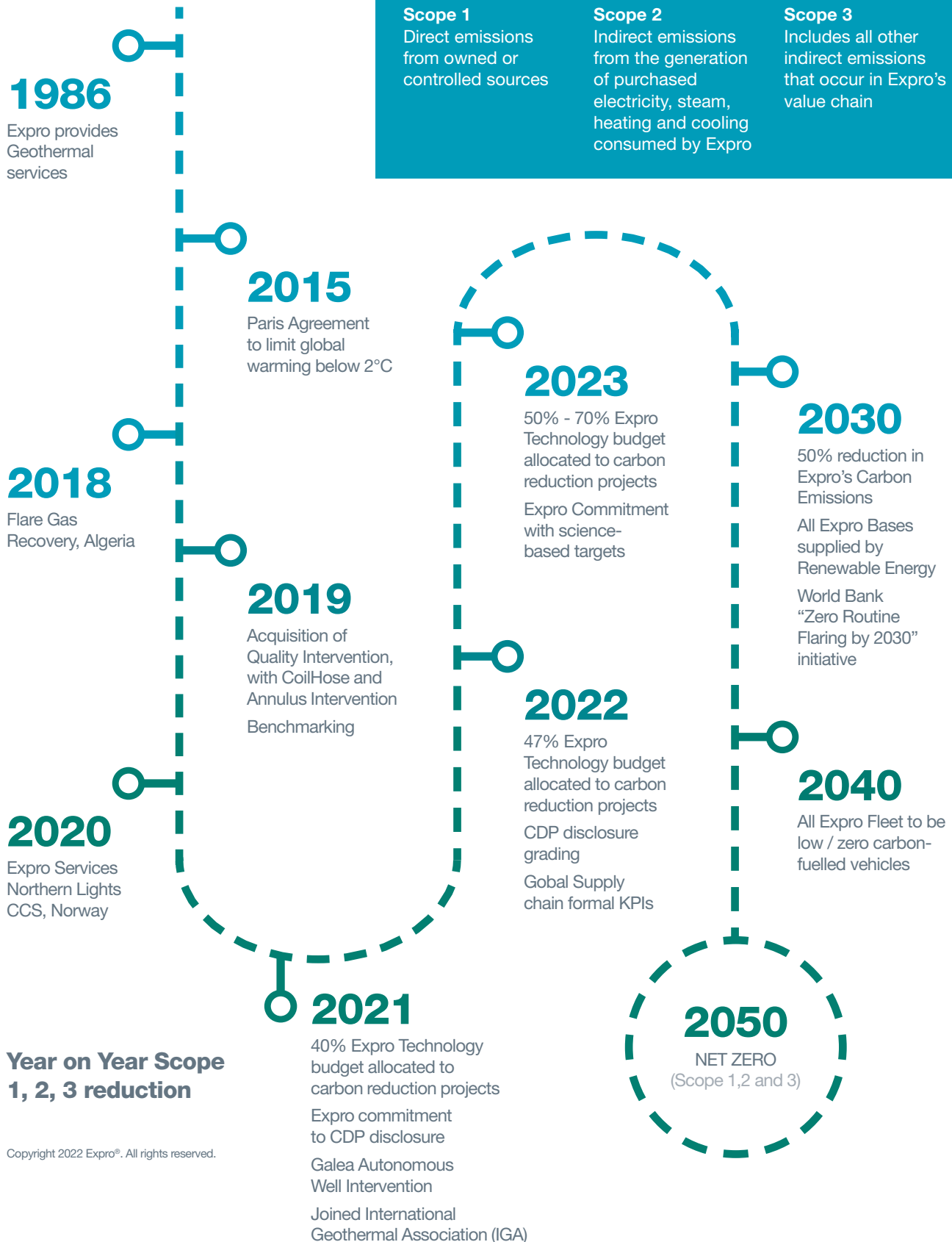
Addressing customers carbon reduction challenges

Circa 40% of R&D investments in 2022 address customers carbon reduction challenges

We are a citizen of the world – addressing our own, and the industry’s effects on the planet to ensure a positive, sustainable impact. We “walk the talk” by joining industry leaders in committing to a more sustainable and lower-carbon future, working to achieve net zero CO₂e emissions by 2050 and 50% reduction in carbon intensity by 2030. Honesty, transparency and accountability lie at the core of this citizenship.

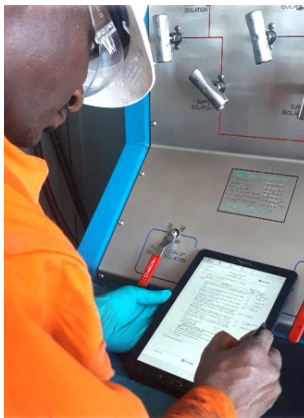
		Access	Optimize	Assure	Drive to Net Zero
Well Construction	Casing Technologies		X	X	X
	Completions Technologies	X	X	X	X
	Drilling Technologies		X	X	X
	Conductor Driving & Slot Recovery		X	X	
	Cementing Technologies		X	X	
	Downhole Service Tools		X	X	
	Tubulars Products & Services		X	X	
Well Flow Management	Well Test	X	X	X	X
	Drill Stem Testing (DST)	X	X	X	X
	Tubing Conveyed Perforating (TCP)	X	X	X	X
	Fluid Sampling & Analysis	X	X	X	X
	Metering Solutions		X	X	X
	Pipeline & Flarestack Services			X	
	Early Production	X	X		
	Onshore Production Units		X		X
	Enhancement Systems		X	X	X
	Facility Upgrade		X	X	
	Operations and Maintenance			X	
	Water Treatment		X	X	X
Subsea Well Access	SSTTA	X	X	X	X
	RWIS	X	X	X	X
	IRS	X	X	X	X
	LWI	X		X	X
Well Intervention & Integrity	Mechanical Slickline	X	X	X	
	Cased Hole Applications	X	X	X	X
	Wireless Wells	X	X	X	X
	Galea™	X	X	X	X
	PDM		X	X	X
	CoilHose		X	X	X
	Octopoda™		X	X	X
	Safewells®		X	X	X
	Petroleum Engineering Solutions	X	X	X	X

Our Planet Road Map



Commitment to sustainability

Expro is committed to reducing harm to the environment and promoting sustainable practices to achieve extraordinary performance.



Measure and drive

Driving performance and efficiency improvements to achieve considered quantified objectives.



Portfolio shift

Adopting and adapting technologies and services to advance and develop the power of data, technology and innovation.



A considered supply chain

Taking a selective and methodical approach to ensure our value and supply chain are playing their part.



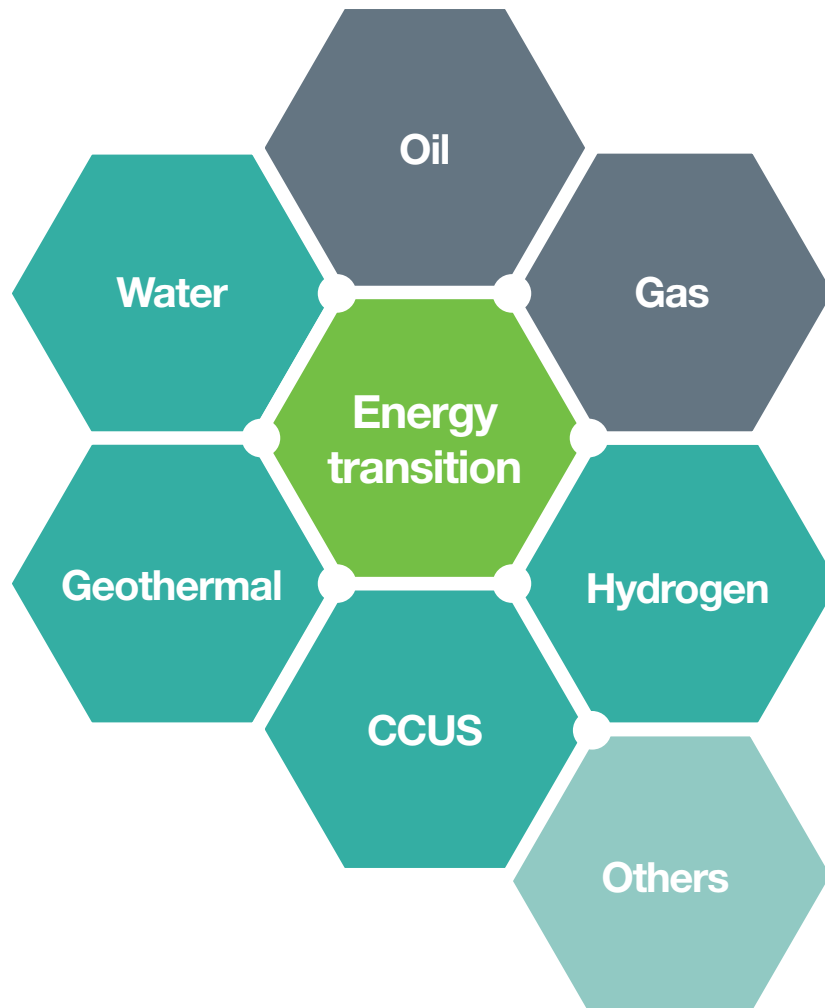
Achieve together

Making a positive contribution to the geographies and communities that we are part of.

Portfolio Shift

Our participation and focus

- We have transferable skills and services applicable to the emerging new energy segments
- We participate in most of these today
- Priority area for Expro's Portfolio Advancement team
- Specific focus on geothermal and water



Portfolio Shift

Circa 40% of R&D investments in 2022 address customers carbon reduction challenges

Customer drivers

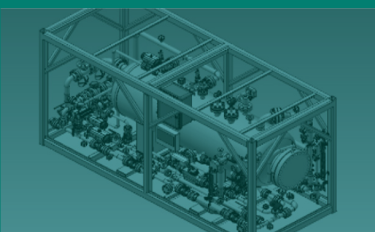
- (DATA, CapEx discipline and Net Zero)
- Lower cost
- Lower carbon
- Faster and better decisions

Extraordinary performance through technology and innovation

Production Optimization-Focused on Gas
 Reduced footprint of ops (physical and carbon)
 Flare-less and or flare redux / analytics
 Energy market evolution (CCUS, GEO, Hydrogen etc)

Technology Investments

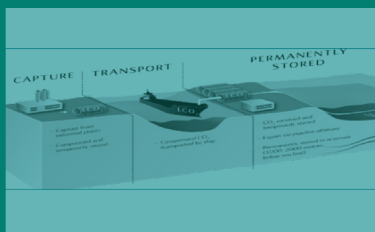
Enhance today.



- Flared gas recovery / avoidance
- Vented gas avoidance
- Electric winches
- Greaseless cables
- 4 Phase Intelligent Separator with FlowMAX adjustable Weir System and Coriolis meter on all separator flow lines
- Autonomous well intervention system
- FlameEx automated safety shut off system
- CoilHose
- Rigless intervention
- Annulus intervention
- Multiphase Meter
- Advanced analytics
- Down Hole Fluid ID
- Reducing energy consumption by maximizing drilling efficiency
- Electric tool development
- Hydraulic Distribution Module Usage

Initiatives / projects

Maximize efficiency.



- Northern Lights CCS in Norway
- Mercury in gas trains removal in Australia
- Flare gas recovery in Algeria
- Methane hydrate projects in Asia
- Geothermal projects globally
- Pipeline services in USA
- CSR activity, i.e. beach clean-ups, etc

Our commitments

Transform tomorrow.



- OGUK Roadmap 2035
- OGTC Industrial Transition
- OGA Energy Integration project
- Input guidance to a sector deal on behalf of the UK government
- International Geothermal Association
- CDP
- COP26
- Optimize Expro's position in:
 - o CCUS
 - o Geothermal
 - o Hydrogen
 - o Water
 - o Flare emission analysis
 - o Gas to Power

Measure and Drive

Our commitment to the energy transition



- Guided by science, CDP runs a global environmental disclosure system supporting companies, cities, states and regions to measure and manage their risks and opportunities on climate change, water security and deforestation.
- CDP provides us with initial benchmarking to set the basic targets and the collection of data.
- Expro's 2022 disclosure project is underway and initial feedback is very positive
- Ongoing assessment of complementary disclosure frameworks



Extraordinary performance

Citizen of the world

Northern Lights

Case study: Playing our part in carbon capture - one example

We take genuine pride in being part of an industry that continues to look forward. And we are playing our part to reduce carbon emissions.

Winner of the ONS 2020 Innovation award, the Northern Lights project transports liquified CO₂ by pipeline to permanent offshore subsea storage.

Our integrated team created confidence in the geology and injection storage simulation modelling, by providing reliable data allowing the project to go ahead.

**Playing our part
to help reduce
carbon emissions**



Gas compression

Case study: Reducing flaring through gas compression

Natural gas flaring represents a lost economic opportunity, but is also a major source of greenhouse gas emissions.

Gas was being flared at multiple production sites due to the unavailability of a the appropriate processing infrastructure. Our customer had a solution but in review was considered unreliable and sub economic.

Expro delivered gas compression solution, enabling our client to contain greenhouse gases and reduce flare footprint for the first time since 2012.

**Playing our part
to help reduce
carbon emissions**



**Customer reduced
Green House
Gas emissions
across sites by
up to 10,000 tons
CO₂e per day**



CoilHose in Malaysia

Case study: Operation completed within 12 hours

CoilHose has a reduced complexity, footprint and weight compared to traditional coil tubing equipment which allowed for optimum planning through to operational execution and de-mob.

Like for like operational timings were significantly reduced and performed with a multi-disciplined reduced POB.

Expro was able complete the operation within 12 hours allowing the client to meet their well test objective.

**Playing our part
to help reduce
carbon emissions**



**CoilHose
operation reduced
well over 75%
of the like for
like operational
CO₂e emissions**





EXPRO[®]