

# Well Testing

## Separation

### Chemical Injection Pump

**Chemical injection pumps are used during well test operations to inject various chemicals into the flow stream at pressure.**

Expro may deploy a variety of air driven pumps to conduct these operations, the chemicals can be pumped into the flow stream down-hole, and either upstream or downstream of the choke manifold.

The pumps typically deployed are Texsteam 'positive displacement' pumps, (Texsteam series 5000 and 6111) and utilise an air powered diaphragm that drives a piston to force the fluid under pressure into the test equipment. The piston length and diameter can be changed to vary the discharge pressure and thereby alter the fluid injection rate.

The pumps are traditionally skid mounted and consist of a frame, control valves, fluid reservoir and an injection delivery hose, although in some cases they can be stand alone.

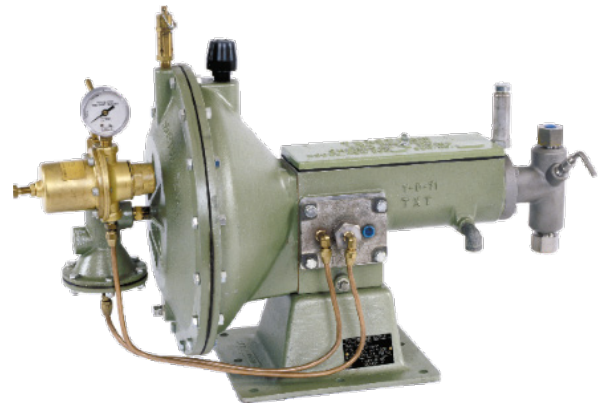
Expro also has a large fleet of air operated, dual action hydraulic pumps for pressure testing which can be used for chemical injection and range from high pressure / low volume to lower pressure / high volume units.

#### Applications

- Onshore and offshore oil and gas well testing and clean-up operations
- Can be used for pressure testing temporary well test equipment off-line
- Pumping required chemical for flowing and clean-up of wells at surface and subsea

#### Features and Benefits

- Air filter, lubricator, pressure regulator, pressure gauge and pump start/stop valve
- Injection rates can be controlled to allow optimal performance of the chemical
- Inlet fluid strainer
- 6" (150mm) diameter panel mounted pressure gauge
- Pressure release valve
- Robust mild steel framework painted to offshore specifications
- Pressure isolation valve
- Stroke counter system
- Pumps can be used for a wide range of chemicals



# Well Testing

## Separation

### Chemical Injection Pump

Technical specifications			
<b>Pump type</b>	Texsteam series 5000		Texsteam series 6111
<b>Speed strokes/min</b>	75		10-22
<b>Flow rate US gallons/day (m<sup>3</sup>/day)</b>	9-626 (0.03 to 2.4)		533 to 1,008 (2.0 to 3.8)
<b>Air/gas requirement scf/day (m<sup>3</sup>/day)</b>	13.6 to 522 (0.4 to 14.8)		20,952 to 252,000 (593 to 7,136)
<b>Piston length &amp; diameter inches (mm)</b>	Short & long stroke lengths		
	¼ to 1¼ diameter (6.35 to 31.75)		6 (152.4) 1¼ (31.75)
<b>Fluid discharge pressure psi (bar)</b>	10,000 (690)		9,000 (621)
<b>Connections inches NPT</b>	Inlet	¼	Inlet ¾
	Exhaust	¾	Exhaust ½
	Suction	¼	Suction ¾
	Discharge	¼	Discharge ¾
<b>Dimensions (L x W x H)</b>	28.25 x 14.0 x 18.5 (718 x 356 x 470)		40.25 x 14.5 x 18.5 (1,022 x 368 x 470)

Note: Other sizes, configurations and pressure ratings are available to meet most applications, for more information contact your local Expro representative or email [welltesting@exprogroup.com](mailto:welltesting@exprogroup.com)

## Product Line name

Product line sub-heading if required

**Datasheet title**



**This page is intentionally blank**