

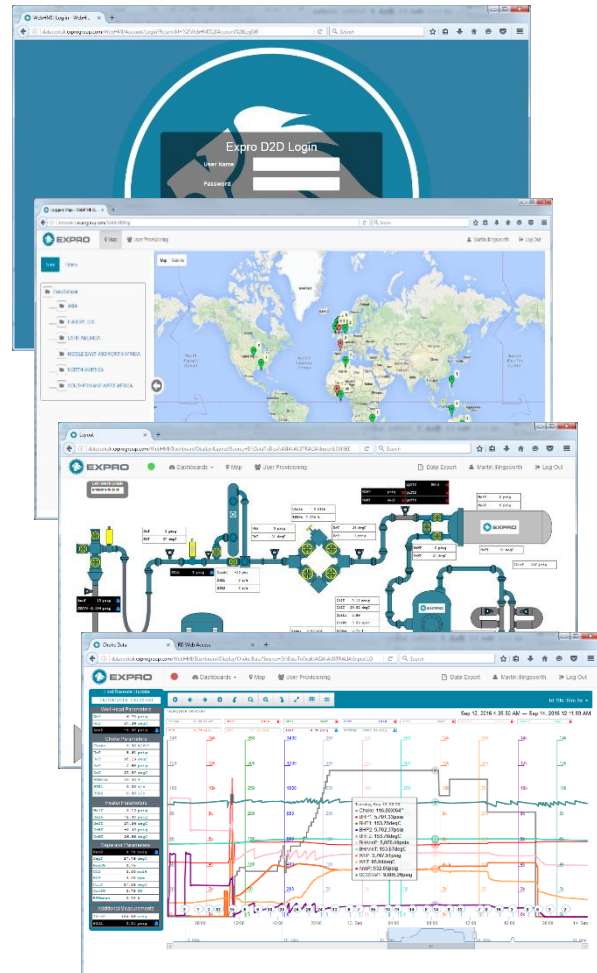
### Data to Desk

**Data to Desk (D2D)** allows real-time data to be shared via a web browser on multiple mobile data platforms allowing users to access their data, at the well site, at their desk or remotely at any location ensuring decisions are made based on real-time data.

It's a vital aid in the decision making process, evaluating well performance and reducing rig time, especially where well sites are difficult to access for key personnel.

The Expro customers have a full suite of tools necessary to view and export real time data through the web browser via a unique and secure login

**D2D** has been incorporated into **EdgeX** data acquisition system.



#### Features and benefits

- Remote access by multiple users
- Real time data anywhere
- Speeds up the decision making process
- Field data viewing and exporting
- Secure data transfer to dedicated server

#### Applications

- Well testing
- Clean up/flow backs
- Production testing
- Production surveillance
- Production optimisation
- Platform monitoring

### Technical specification – remote viewing

URL	<a href="https://datatodesk.exprogroup.com/webhmi">https://datatodesk.exprogroup.com/webhmi</a>
URL	Uses JavaScript, SignalR and html5 for refreshing data
Browser	IE11, Firefox or Chrome

### Technical specification – uploading data

Server HTTP Address	datatodesk.exprogroup.com
Server IP Address	213.212.124.183
IP Address	Static
HTTP port	80
RDP Port	3389
Firewall	None
Protocol	HTTPS (with SOAP request)
Access	Outbound & Inbound
<b>Bandwidth – recommended</b>	<b>250 Kbits/s<sup>(1)</sup></b>
Bandwidth – minimum	150 Kbits/s <sup>(1)</sup>

Note <sup>(1)</sup> excluding other devices attached to network router. Additional bandwidth required if computers or other devices are attached to the same network router.

