

Expro Excellence

Expro meets strict produced water specification on brownfield site

Production



Objectives and background

- The customer was not able to meet their Oil in Water (OIW) and Total Suspended Solids (TSS) Specification for injection, resulting in fouling of their injection wells and production downtime
- Their existing in-situ produced water treatment equipment was non-operational or bypassed due to poor performance and improper maintenance
- The existing process scheme and vessel performance was inhibiting treatment performance

Expro Excellence

- Expro supplied desanders, a Corrugated Plate Interceptor (CPI), Induced Gas Flotation (IGF), and Nutshell Filters to meet the strict injection specification
- Equipment was integrated into the existing brownfield facility and Customer equipment was de-bottlenecked from design through commissioning and start up to meet the required discharge specification
- A One Team approach was implemented, integrating in-country engineering, construction, and operations resources with out-of-country engineering and project management resources, and vendor support to deliver this complex project

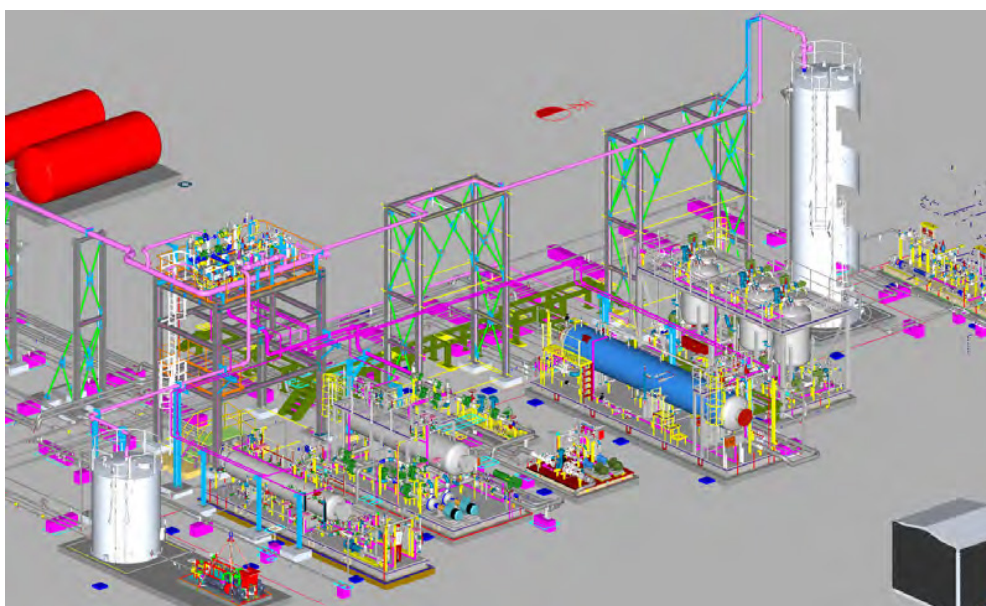
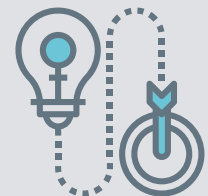
Value to the client

- Through site surveys, speaking with the customer, and understanding their challenges, Expro was able to develop an integrated solution, making use of existing customer equipment and supplementing with new build, modular process packages

Bespoke solution



Innovative solution



Project highlights

- Location:**
Onshore, Algeria
- Project Type:**
Produced Water Treatment
- Capacity:**
120 m³/hr (18,000 BPD)
- Outlet Specification:**
<10 mg/L OIW and
<30 mg/L TSS
- Contract:**
Lease-Operate-Maintain (LOM)
- Safety:**
No Lost Time Incidents (LTI)