

# Well Construction

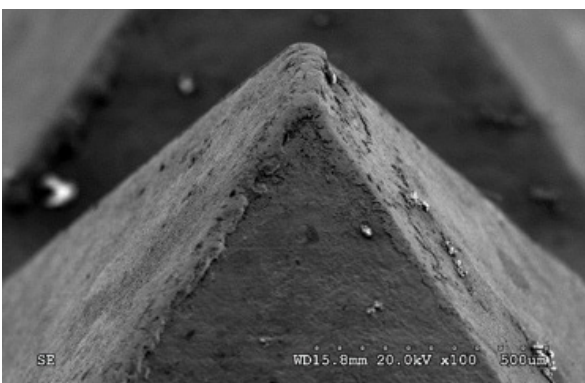
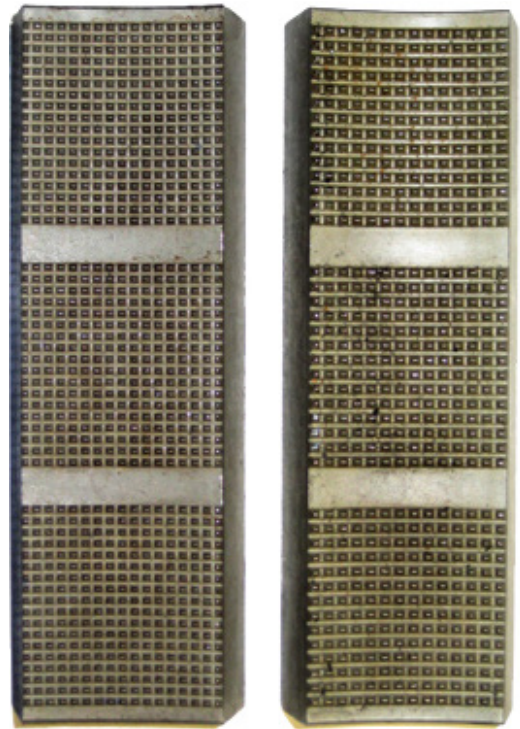
## Frank's Tubular Running Services (TRS)

### FINE POINT™ Inserts

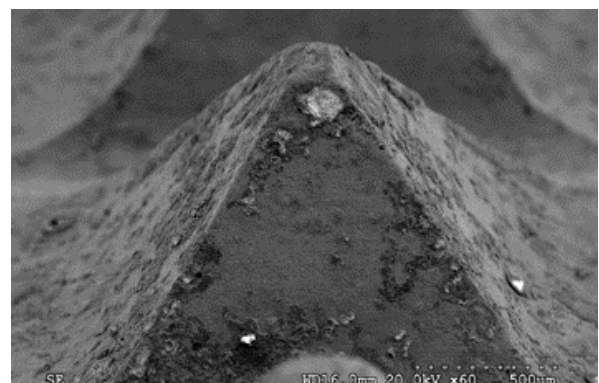
In those situations where CLS™ and FLUID GRIP® technology are not options for running quenched and tempered CRAs (e.g., 13Cr-110), Expro offers proprietary FINE POINT™ technology as a secondary option.

#### Features and benefits

- Geometric and metallurgical optimization of dies and inserts
- Proprietary and patented metallurgical treatment to enhance surface and near-surface properties of dies and inserts
- Ability to penetrate oxide layer present on quenched and tempered CRA tubulars (e.g. 13Cr-110)
- More uniform load sharing along length of each slip
- Increased lubricity for ease of penetration and cleaning
- Reduces and eliminates iron transfer



Brand new FINE POINT™ Insert



Same insert after 1,000+ joints of 13Cr (with 70 HRC equivalent oxide layer) in the field