

Well Intervention and Integrity

Cased hole intervention

Kinley K2-Cutter

Expro's unique, next generation, electro-mechanical cutter is capable of cutting a wide range of wire and cable sizes from slickline through to 5/16" Dyform braided cable.

With no explosives content, no hydraulics and no Lithium batteries it can be quickly and easily transported to any location. The Kinley K2-Cutter is deployed fully non-Hazmat by using single use, field replaceable electronics modules containing Alkaline cells.

Designed to activate after a fully programmable time delay has elapsed, the on-board flash memory logs time, status, axial and radial acceleration (tilt and shock) along with motor voltage and current for post-job analysis.

The modular design allows for interchangeable crimps, rollers, pump down subs and no-go's to suit the job requirements.

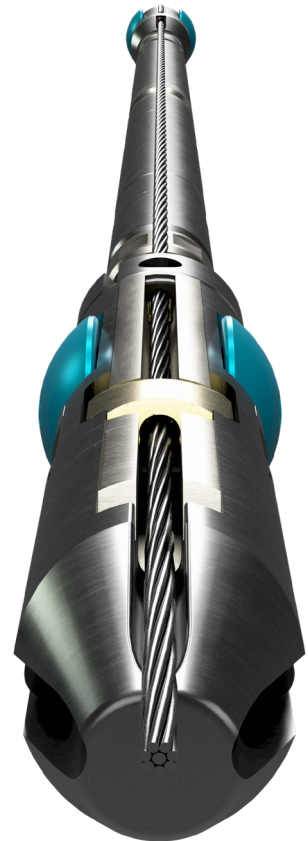
A pre-job verification cut can quickly be performed on site prior to deployment then simple, fastener-less installation on the wire can be completed in minutes.

Applications

- Highly deviated wells
- Failing sand conditions
- Tool string stuck outside of the tubing
- Heavy mud conditions

Features and Benefits

- Non-Explosive / Non-Hazmat
- Alkaline battery pack
- Pre-run test cut verification
- Fastener free installation on wire in minutes
- Modular design for rollers & pump-down options
- Field redressable





Well Intervention and Integrity

Cased hole applications

Kinley K2-Cutter

Specifications	
Nominal OD	1.688"
Max. OD - Wire guide and cutter head	2.188"
Nominal overall length	57.8"
Max. pressure	15,000 psi
Max. temperature	135°C for 6hrs, 150°C for 1hr
Upper head mechanical connection	15/16"-10 SR PIN
Fishing neck	1.375"
Memory capacity	+1, 000,000 data sets
Sample rate	0.1 second increments
PC connection	USB compatible
Cut capabilities	All slickline sizes and specifications All braided line sizes and specifications up to 5/16" Dyform
Crimp	Options to suit all wire / cable sizes & types