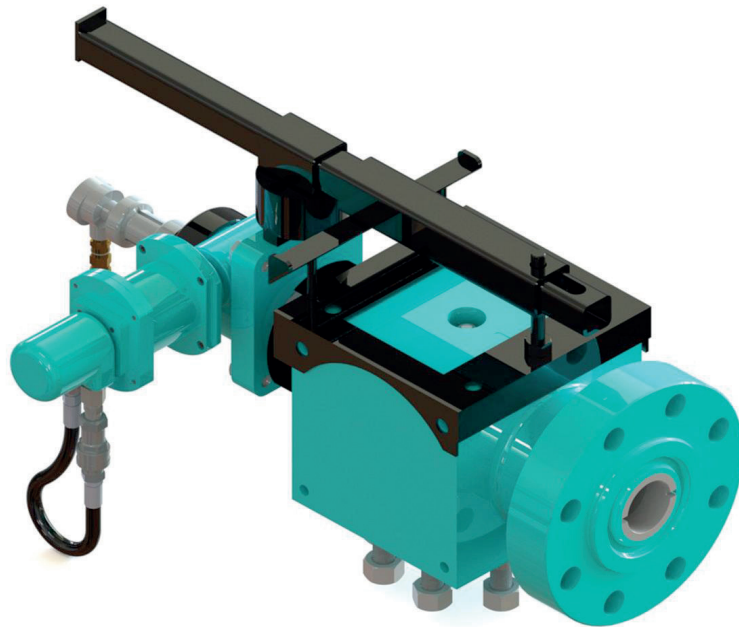


PowerChokes®

Automatic Back Pressure (ABP) System

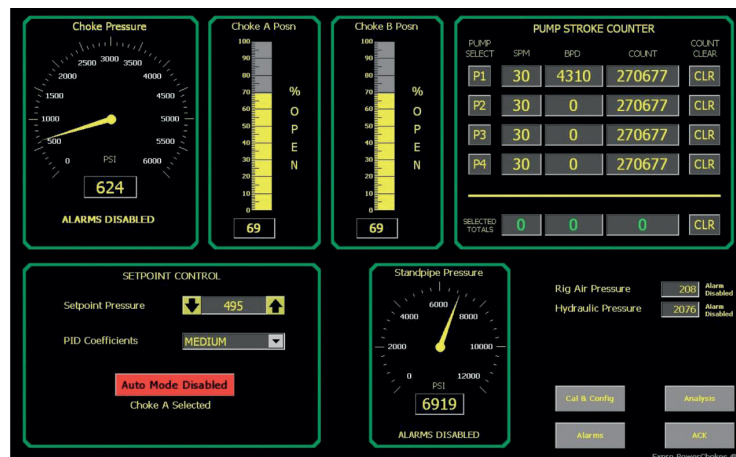
PowerChokes® ABP system uses field-proven Expro PowerChokes® technology and proprietary software for positioning accuracy, stability and reliability.

Touch screen HMI. Capable of mounting anywhere on the rig for complete control.



Features

- Drilling connection mode feature for maintaining well pressure profile
- Operates two electric or hydraulic chokes automatically in either automatic mode, or manual with a toggle/joystick
- Secondary choke can perform as Pressure Relief Valve (in dual choke sequence)
- Enhanced self-tuning feature automates choke reaction and takes away manual intervention requirement
- Reliably manages connections
- Accurately holds system pressure to maintain well bore pressure
- Efficient pressure management throughout drilling process
- Manages stable surge and swab
- Once desired back pressure is set the choke automatically maintains the pre-set pressure
- Allows for drilling into tighter pressure gradients +/- 20psi
- All data is logged and retrievable
- Can take manual control at any time
- Change the desired back pressure as wanted, manually at the control panel or by a remote signal
- Displays multiple pump stroke counters
- Displays choke and standpipe pressures: choke position and set pressure, rig air and HPU hydraulic pressure, all with adjustable hi/lo alarms



Benefits

- Faster connection time
- Lower mud costs
- Safely manages influx automatically during any operation
- Reduced overall AFE
- Fast response to system pressure fluctuations
- Stabilises pressure control over the entire flow rate
- Accurate control over the entire flow range

PowerChokes®

Automatic Back Pressure (ABP) System

Conforms to:

- API 6A and API 16C
- API 3000, 5000, 10000, 15000 PSI ratings
- ABS and DNV type approved
- PED Assessment module: module B1 + module F and CE mark
- CSA certified class 1 division 2
- ATEX certified suitable for zone 2
- Electric actuator certifications: FM factory mutual (USA), CSA (Canada), ATEX, GOST (Russia), IECEx
- Drop-tight seat seal

Material information:

- NACE MR0175
- API material class EE or better
- 316SS enclosure, NEMA 4X, IP 65 ingress protection
- 316SS or Inconel clad ring grooves and seal areas optional solid tungsten carbide trim and wear sleeve

