

PowerChokes®

MultiChoke

For more than 25 years, Expro PowerChokes® has been the industry standard for severe service drilling, flowback, well test, production applications, and Managed Pressure Drilling (MPD).

That standard for innovation, reliability and unsurpassed quality is embodied by our complete and fully automated performance drilling technologies that safely and effectively manage influx in the most pressure-intensive applications, from closed-loop underbalanced to pressurized mud cap drilling.

Expro's chokes come in various sizes for different applications and pressure requirements. We provide expert engineering for specific choke applications.

Pressure Balanced Trim

Trim is pressure balanced to reduce operating forces, whether the choke is operated manually or automatically. Large balance ports provide protection against clogging.

Reversible Trim

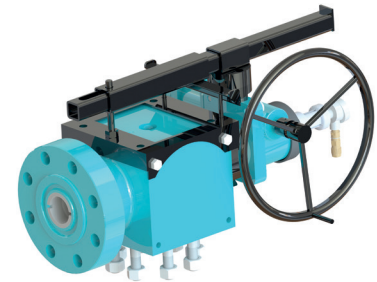
Gate and seat may be reversed in the field should wear occur in service, providing double trim life.

Actuator

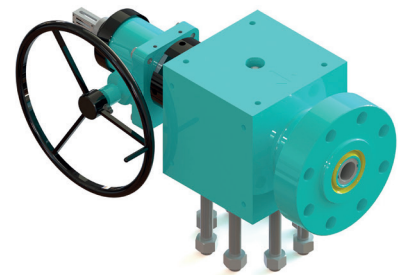
Chokes are available with the exclusive modified worm gear actuator, hydraulic, piston, electric or manual actuator. Manual override on all worm gears.

Seat Leakage

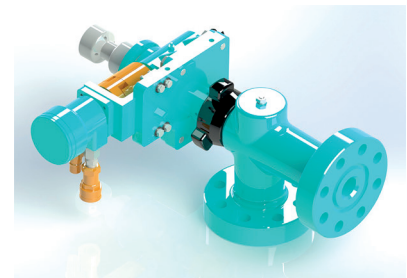
Each choke is seat-tested prior to shipment to achieve drop tight sealing per Application Programme Interface (API) 16C testing requirements. This exceeds ANSI B16.104 Class V (FCI 70-2) leakage requirements, without the use of O-rings or other soft sealing elements in the gate-to-seat seal design.



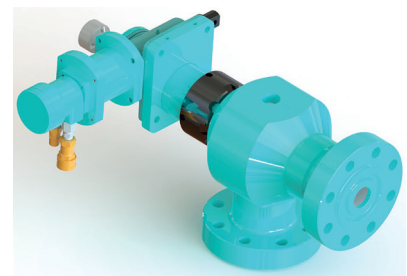
Model SCB



Model SCD



Model SCC



Model SCF

MultiChoke

Technical specifications				
	Model SCB	Model SCD	Model SCC	Model SCF
Inlet sizes available	3 1/16" to 4 1/16" Studded and flanged	2 9/16" studded	1 1/16", 2 1/16", 2" fig 1502, 3 1/8"	2 1/16" x 3 1/16" studded or flanged
Outlet sizes available	3 1/16" to 4 1/16" flanged	3 1/16" flanged	1 1/16", 2 1/16", 2" fig 1502, 3 1/8"	2 1/16" x 3 1/16" flanged
Trim sizes available	1 1/2", 2", 3", 4"	1 1/2", 2"	1"	1 1/2", 2"
Pressure rating (psi)	5,000, 10,000, 15,000	20,000	5,000, 10,000, 15,000	5,000, 10,000
Application Programme Interface (API) temperature class	-20° to 350°F (-29° to 177°C)	-20° to 350°F (-29° to 177°C)	-20° to 350°F (-29° to 177°C)	-20° to 350°F (-29° to 177°C)
Application Programme Interface (API) API material class	Up to EE-NL	Up to EE-NL	EE-NL	Up to EE-NL
Application Programme Interface (API) API PSL levels	1-3, 3G	1-3	1-3	1-3
Application Programme Interface (API) API PR levels	1-2	1	1	1-2
Actuation	Hydraulic, manual, electric	Hydraulic, manual, electric	Hydraulic, manual, electric	Hydraulic, manual, electric
Trim material	Solid tungsten carbide	Solid tungsten carbide	Solid tungsten carbide	Solid tungsten carbide
Standard X & Y dimension	13" x 5 5/8"	13" x 6.53"	7 3/8" x 9 1/3"	11 3/4" x 10 3/8"

Note: Other sizes, configurations and pressure ratings are available to meet most applications, for more information contact your local Expro representative or email expro.powerchokes@exprogroup.com