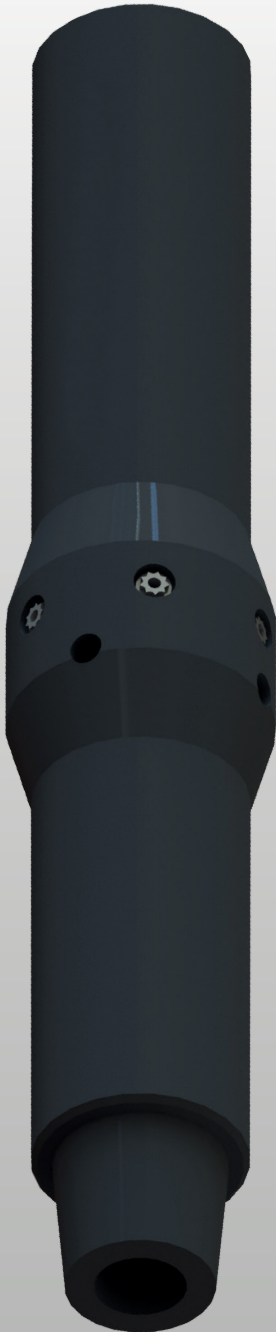




# BOP Jetting Sub



**The BOP Jetting Sub has been designed to dislodge debris and clean out the BOP, riser and wellhead area, casing and tubing anchors.**

The device has six ports which can be fitted with a variety of nozzles, allowing the tool to adapt to various pump capacities. It can also be racked back in the derrick and used during downtime in order to eliminate heavy debris build up in the BOP area.

It can be run as part of the BOP clean up and swarf recovery string after section milling to help dislodge swarf and other debris from the cavities of the BOP. This has been proven to reduce the amount of time required to clean the BOP at surface after milling operations, saving valuable rig time.

## BENEFITS

- Suitable for a range of operations with various tool ODs to suit a number of BOP configurations
- Option to run in the open position or in the closed position where it can be activated by pumping an activation ball from surface
- Sizes also available for riser applications



## SPECIFICATIONS

	8 in	8 1/2 in	14 in	16 in
<b>Tool ID</b>	2.000"	2.000"	2.000"	2.000"
<b>Drift Size</b>	1.875"	1.875"	1.875"	1.875"
<b>Tool OD</b>	8.000"	8.500"	14.000"	16.000"
<b>Quantity and Size of Nozzles</b>	6 x 0.625"	6 x 0.625"	6 x 0.625"	6 x 0.625"
<b>Length of Tool</b>	41"	41"	41"	41"
<b>TFA Through Tool</b>	3.1416 in <sup>2</sup>	3.1416 in <sup>2</sup>	3.1416 in <sup>2</sup>	3.1416 in <sup>2</sup>
<b>TFA Through Nozzles</b>	1.841 in <sup>2</sup>	1.841 in <sup>2</sup>	1.841 in <sup>2</sup>	1.841 in <sup>2</sup>
<b>Working Pressure (psi)</b>	10,000 psi			