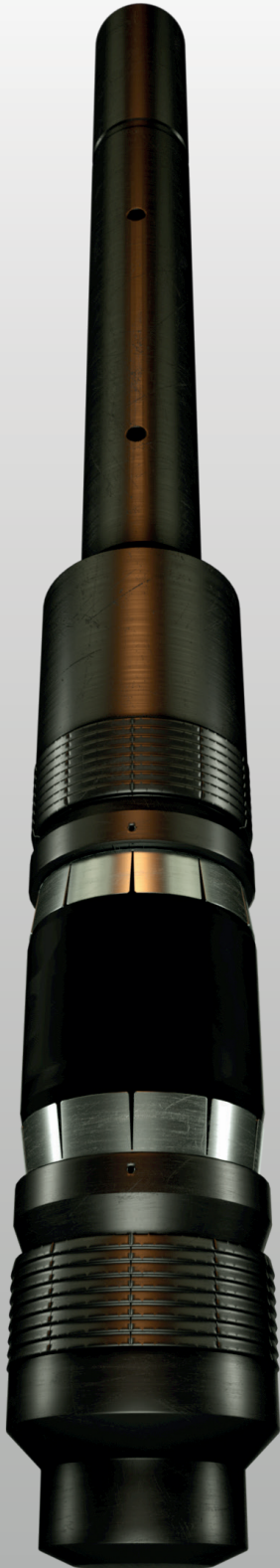




CX-WS Bridge Plug



Confidently setting an environmental barrier for plugging and abandonment operations is essential to ensure long-term well integrity.

The CX-WS Bridge Plug is a cast iron bridge plug which is set using electric wireline. Constructed of drillable materials, this enables the plug to provide an economic method of delivering temporary or permanent zonal isolations. The versatile device can also be converted to enable it to be set using tubing, if required. It has a 300°F temperature rating and can be rated to 400°F if required.

The plug has a wide range of applications including cementing and abandonment applications.

BENEFITS

- Fully drillable
- Can be drilled out in approximately 35 minutes
- One piece slips

APPLICATIONS

- Wellbore clean-up
- Milling
- Drilling



SPECIFICATIONS

Casing OD	Casing Weight	Plug OD	Setting Range
3-1/2"	7.7# - 10.2#	2.750"	2.992" - 3.068"
4-1/2"	9.5# - 15.1#	3.613"	3.826" - 4.090"
4-1/2"	9.5# - 16.6#	3.500"	3.826" - 4.090"
5-1/2"	13.0 - 23.0#	4.315"	4.670" - 5.044"
5-1/2"	13.0 - 25.0#	4.24"	4.580" - 5.047"
7"	17.0# - 35.0#	5.680"	6.004" - 6.538"
7"	23.0# - 40.0#	5.34"	5.595" - 6.366"
7-5/8"	20.0# - 39.0#	6.312"	6.625" - 7.125"
8-5/8"	24.0# - 52.0#	7.125"	7.435" - 8.097"
9-5/8"	29.3# - 53.5#	7.71"	8.435" - 9.063"
9-5/8"	29.3# - 61.1#	8.125"	8.435" - 9.063"
10-3/4"	32.75# - 60.7#	9.437"	9.660" - 10.192"
11-3/4"	38.0# - 60.0#	10.437"	10.772" - 11.150"
13-3/8"	48.0# - 72.0#	12.000"	12.347" - 12.715"
16"	65.0# - 128.0#	14.125"	14.438" - 15.250"
18-5/8"	76.0# - 96.5#	17.25"	17.655" - 18.730"
20"	133.0# - 169.0#	17.25"	17.655" - 18.730"

Other sizes available on request.