



EXPRO

Corporate overview

2021

NYSE: XPRO | expro.com

FULL-CYCLE ENERGY SERVICES PROVIDER



Working for our clients across the entire well life cycle, Expro is a visionary full-cycle energy services expert offering novel, insightful solutions, dependable competency and award-winning safety.

Combining innovative, future-facing technology with high-quality data across well construction, well flow management and production, subsea well access, and well integrity and intervention, we have a reputation for extraordinary performance that keeps your operations running smoothly.

We're right-sized, right now to deliver world-class services. Being nimble means we're not locked into unyielding ways of working, we're more responsive to your changing needs and always ready to help.

We're mindful of our impact on the planet, as well as the health and well-being of our workforce.

Partner with us to help address the critical energy challenges of today and engineer the answers of tomorrow.

OUR VISION



Recognized for extraordinary performance, championing safety and long-standing partnerships, Expro is focused on unleashing the power of data and digital transformation as key drivers that enable our customers to make more timely and informed decisions.

Our license to work is founded upon a solid reputation for competency and dependability, an innovative and unified worldwide team whose skills are constantly evolving with the industry, deep insight into the needs and preferences of our customers and unrelenting commitment to customer service quality.

We are a visionary market influencer, capable of designing and deploying novel solutions that win the day by leveraging innovative, future-facing technology. Our solutions continuously challenge established methods of conducting operations in fresh and bold ways.

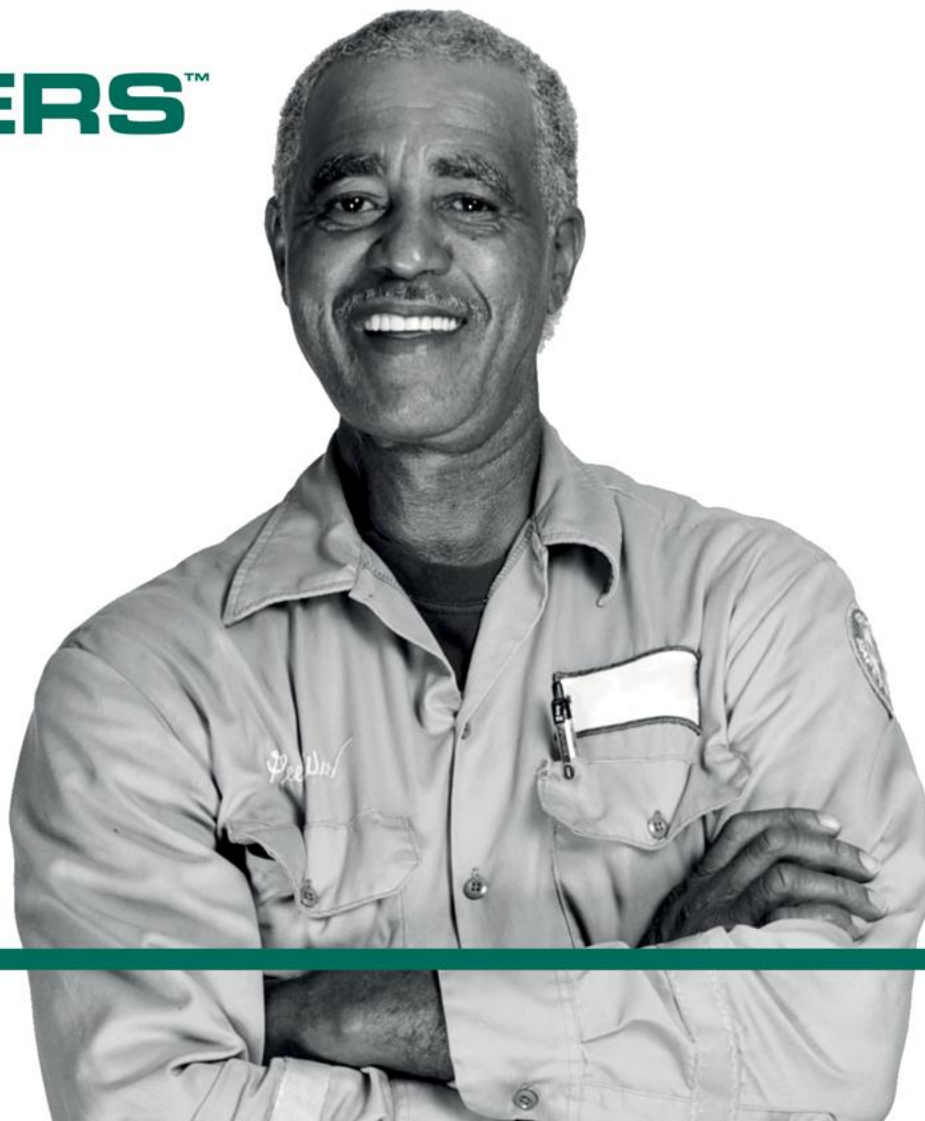
With a well-equipped, well-motivated workforce, we're right-sized, right now to deliver a uniquely satisfying customer experience. We are flexible and responsive whilst providing a strong,

balanced services portfolio to deliver world-class service and technology as a go-to partner in our selected markets. We win business because we are the best, not because we are the biggest.

Expro will always put the right people forward to do the right work for the right customers in the right places. But we have a duty to go far beyond this. We are a citizen of the world – addressing our own, and the industry's effects on the planet to ensure a positive, sustainable impact. We "walk the talk" by joining industry leaders in committing to a more sustainable and lower-carbon future, working to achieve net zero CO_{2e} emissions by 2050 and 50% reduction in carbon intensity by 2030. Honesty, transparency and accountability lie at the core of this citizenship.

This vision is what will make us visible, distinctive and highly relevant in the industry, creating value for our customers, employees and investors alike. It's an approach that will attract new customers and enhance existing business in the years ahead. And it will ensure we can attract, retain and nurture a talented and diverse workforce to turn our growth ambitions into reality.

FUTURE ENGINEERS™



People are the most important.
And every Expro person
engineers our future.

We are the drivers of
our methodologies.
We are confident.

We can draw out the right
answers which attract
the right customers.

Company highlights

More than 80
years of
market
leadership

- **Leading full-cycle energy services expert** with an outstanding reputation for future facing technology driven-solutions, service quality and HSE
- **Broad portfolio of products and services** across the full well lifecycle providing scale, breadth and stability
- **Future-facing technologies** that allows company to participate in **energy transition** as we embark on our journey to net zero achieving a 50% reduction in CO2e by 2030 and net zero by 2050
- **Global operating footprint** with scale / scalable presence in key markets
- **Attractive growth opportunities**, focused on leveraging relationships with NOC / IOC customers and life-of-field capabilities
- **Strong financial profile** that reduces risk and increases strategic flexibility



High calibre management team guided by our core values



Mike Jardon
Chief Executive Officer



Alistair Geddes
Chief Operating Officer



Natalie Questell
Senior Vice President,
Human Resources



Quinn Fanning
Chief Financial Officer



Karen David-Green
Chief Communications, Stakeholder
and Sustainability Officer



Steve Russell
Chief Technology Officer



Nigel Lakey
Senior Vice President,
Portfolio Advancement



John McAlister
General Council



Keith Palmer
Primary Integration
Lead



People

At the heart of our success. We recognize the value of our people and are committed to providing the working environment, encouragement and personal development to achieve our goals.

Performance

Getting it right first time, every time. We are passionate about safely delivering excellent quality customer service. We embrace teamwork, individually and collectively assuming responsibility for delivering the highest value to all our stakeholders.

Planet

We are committed to reducing our own environmental impact. We will play a relevant role in the energy transition towards a lower carbon future. We are also determined to make a positive impact wherever we operate

Partnerships

We listen to our customers and build relationships to understand their needs. We innovate with purpose to apply, adapt or develop our technologies and services to provide timely and effective solutions.

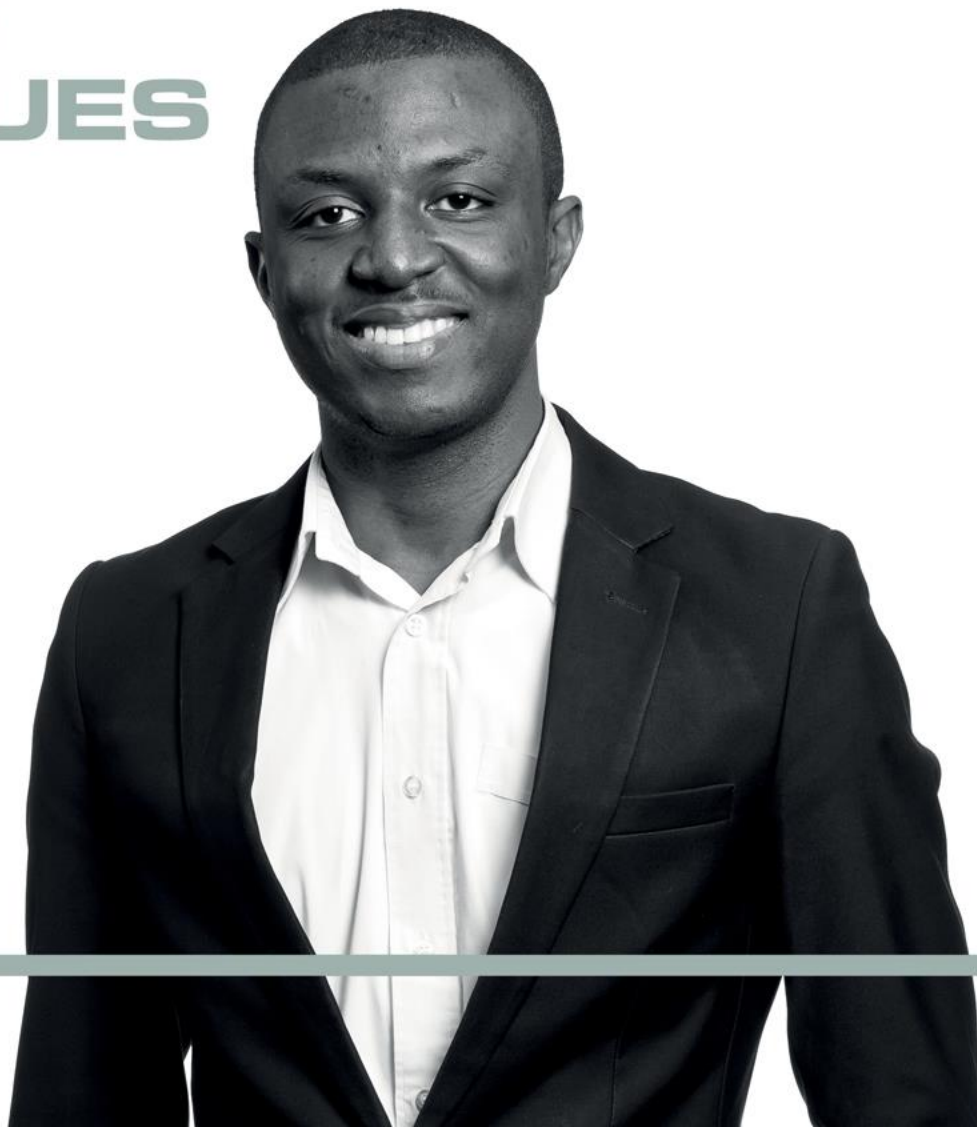
OUR MISSION



To know everything
about your subject
is excellent.

To take genuine pride
in everything is Expro.

OUR VALUES



People

At the heart of our success. We recognize the value of our people and are committed to providing the working environment, encouragement and personal development to achieve our goals.

Performance

Getting it right first time, every time. We are passionate about safely delivering excellent quality customer service. We embrace teamwork, individually and collectively assuming responsibility for delivering the highest value to all our stakeholders.

Planet

We are committed to reducing our own environmental impact. We will play a relevant role in the energy transition towards a lower carbon future. We are also determined to make a positive impact wherever we operate.

Partnerships

We listen to our customers and build relationships to understand their needs. We innovate with purpose to apply, adapt or develop our technologies and services to provide timely and effective solutions.

OUR BEHAVIORS



Think planet

We commit to reduce our environmental footprint and improve our local impact.

Be accountable

We take responsibility for and pride in our actions.

Champion safety

We strive to be at the forefront of safety, in everything we do.

Embrace teamwork

We work together to deliver an excellent service – we coach and learn from others.

Drive innovation

We inspire and innovate with purpose to seek out solutions for every challenge.

Partner customers

We build and sustain high value partnerships with our customers and colleagues.

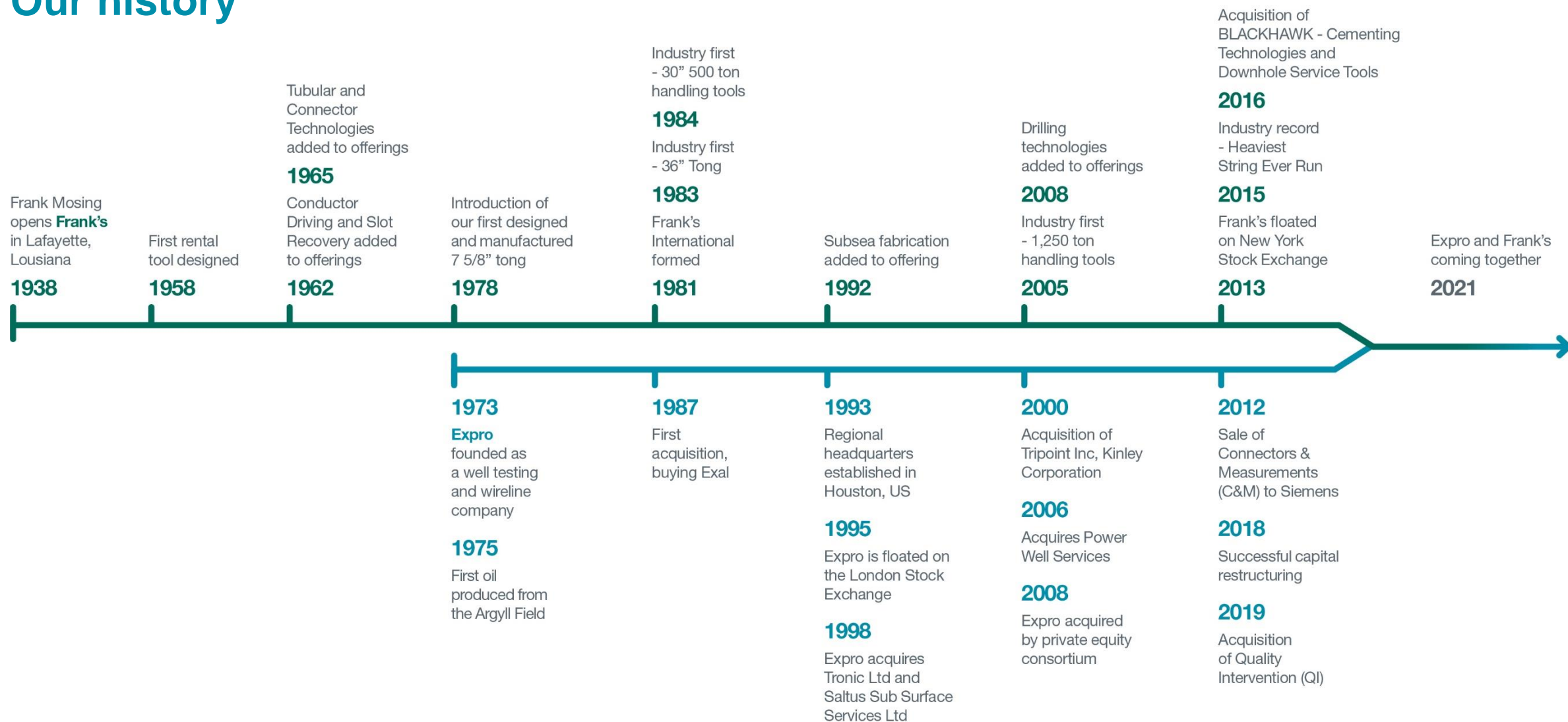
Communicate effectively

Effective communication is key. We share information and respect everyone we work with.

Deliver quality

We focus on delivering operational excellence to all our stakeholders.

Our history

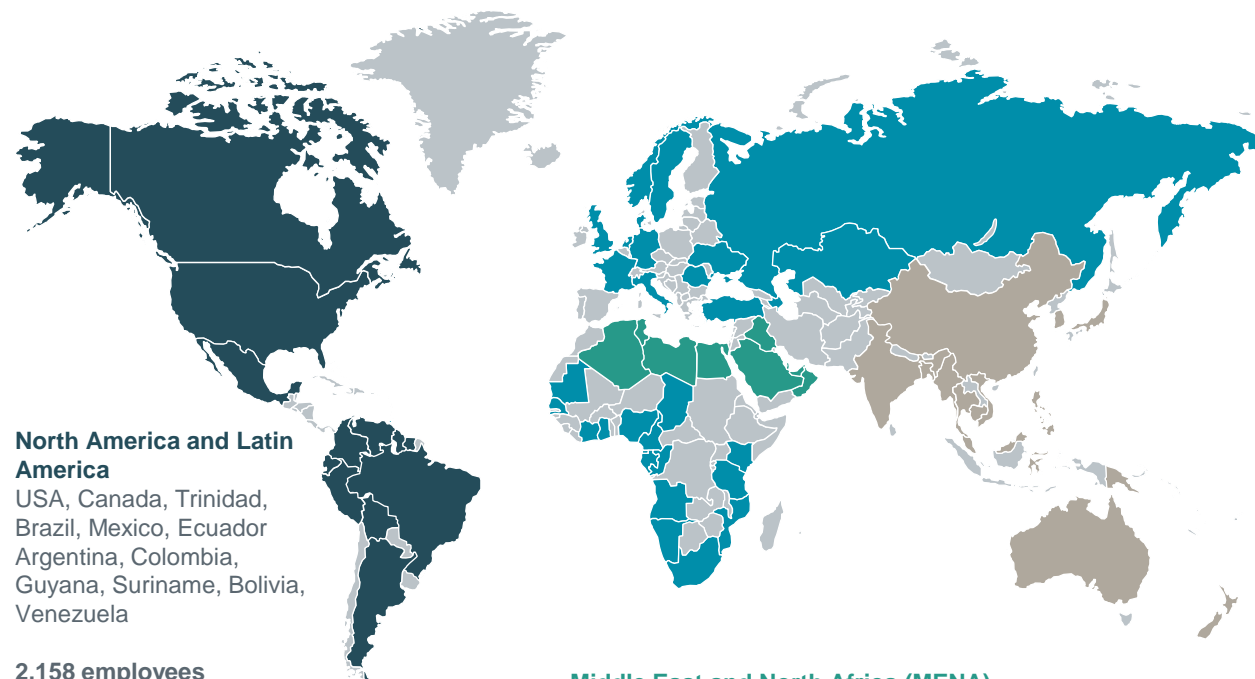


Extensive global reach

Expro employs over ~6,600 people in 64 countries, offering a truly global service solution

Operating headquarters are in the US

Regional headquarters are in Aberdeen, Dubai, Houston and Kuala Lumpur



North America and Latin America
USA, Canada, Trinidad, Brazil, Mexico, Ecuador, Argentina, Colombia, Guyana, Suriname, Bolivia, Venezuela

2,158 employees

Middle East and North Africa (MENA)
Algeria, Saudi Arabia, Egypt, UAE, Qatar, Iraq, Libya, Oman, Kuwait, Tunisia, Kurdistan and Lebanon
1,369 employees

Europe & Sub Saharan Africa (ESSA)
UK, Kazakhstan, Norway, Netherlands, Azerbaijan, Denmark, Germany, Turkey, Russia, France, Italy, Ukraine, Ghana, Gabon, Angola, Nigeria, Congo, South Africa, Cameroon, Mozambique, Kenya, Ivory Coast, Chad, Equatorial Guinea, Mauritania, Tanzania, Namibia, Senegal, Israel and Cyprus

1,938 employees

Asia Pacific (APAC)
Australia, New Zealand, Brunei, China, India, Indonesia, Malaysia, Philippines, Thailand, Vietnam, Japan, Myanmar

1,285 employees

Always Championing Safety

QHSE Performance

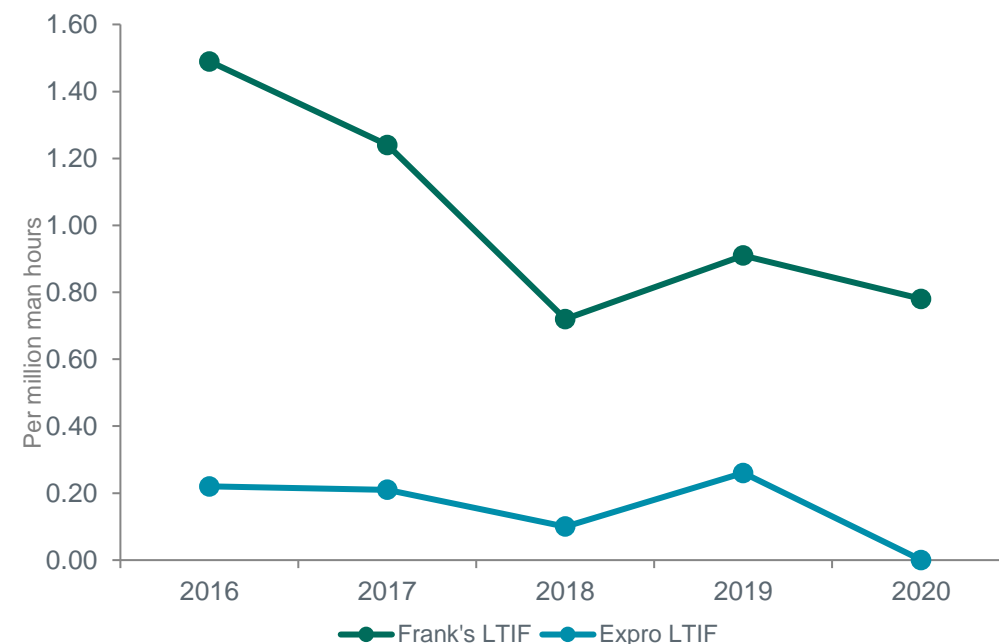


Champion safety

We strive to be at the forefront of safety, in everything we do.

- Customers value the reliability, quality and safety of Expro's services
- Established reputation for delivering operational and technical excellence that exceeds customer expectations and underpins Expro's brand
- Executive leadership, managers and employees are committed to delivering the highest standards of safety performance
- Recognized for 16 consecutive years by the Royal Society for the Prevention of Accidents (RoSPA) for health and safety performance (2019 Scotland Trophy recipient and Order of Distinction for 16 consecutive gold awards)
- Industry certified: API Q2, ISO 9001:2015 quality management system, ISO 14001:2015 environmental management, ISO 45001 occupational health and safety

Lost Time Injury Frequency (LTIF) (million man hours basis)



Safety global track record



Safety is paramount in our organization. We pride ourselves on having a strong safety culture and we always encourage our employees to champion safety at every opportunity while we work.



Mike Jardon,
Chief Executive Officer

North & Latin America (NLA)

Canada
13 years LTI free

North America (Land)
6 years LTI free

Alaska
5 years LTI free

Gulf of Mexico
8 years LTI free

Trinidad
23 years LTI free

Brazil offshore
4 years LTI free

Argentina
14 years LTI free

Bolivia
14 years LTI free

Europe & Sub-Saharan Africa (ESSA)

SEA
7 years LTI free

UK & Central Europe
3 years LTI free

Norway
13 years LTI free

Europe & Sub Sahara Africa
3 years LTI free

Middle East North Africa (MENA)

Middle East
1 year LTI free

North Africa East
1 year LTI free

North Africa West
1 year LTI free

Asia Pacific (APAC)

Asia
10 years LTI free

India
23 years LTI free

South East Asia -North
13 years LTI free

South East Asia-South
10 years LTI free

Australia
15 years LTI free

Service quality



Expro is a visionary full-cycle energy services expert offering novel, insightful solutions, dependable competency and award-winning. Our license to work is founded upon a solid reputation for competency and dependability, an innovative and unified worldwide team whose skills are constantly evolving with the industry, deep insight into the needs and preferences of our customers and unrelenting commitment to customer service quality.



Alistair Geddes,
Chief Operating Officer

North and Latin America

Customer job performance

2018	93.4%
2019	90.0%
2020	93.8%



The final hookload was 2.402MMLBS. This was a true engineering success by the team all the way from the string design, equipment selection, slip crush analysis, and the QAQC of all the components going into the well. I can honestly say, this is something that we might never see again so please take a moment to appreciate what you and your teams delivered.

Europe and Sub Saharan Africa

Customer job performance

2018	91.2%
2019	92.4%
2020	93.8%



I would like to thank you for the quality of your job, your pro-activity and your flexibility, even if we did not run the EM gauges this time, I am sure we will work together on coming projects, and this time we will run it.

Middle East and North Africa

Customer job performance

2018	93.3%
2019	90.0%
2020	93.1%



You guys should be really proud of the startup of this contract with QG all in all a great effort. You have now set the benchmark and our management expect the same level of efficiency to continue for the remainder of this contract.

Asia Pacific

Customer job performance

2018	92.2%
2019	90.0%
2020	92.4%



We would like to congratulate and express our sincere appreciation to Expro for successfully executing DST-TCP HPHT job at Rajahmundry onshore.

Energy transition

Citizen of the World

Enhance today.
Maximize efficiency.
Transform tomorrow.

Expro will always put the right people forward to do the right work for the right customers in the right places. But we have a duty to go far beyond this.

We want to be more **relevant** in today's world. We must reduce our own environmental impact. Our industry is part of the solution to address a lower carbon future – and **we are committed to playing our part**.

We are advancing and developing technologies to achieve this and participate in maximizing recovery. Our focus and commitment on innovation, efficiency, and digitalization better informs our customers, enables operational excellence and facilitates more timely and informed decisions.

Ultimately making an impact on the future of each and every one of us.



Citizen of the World – Our ESG Commitment

Taking pride in being a responsible and transparent business that operates a clear set of environmental, social and governance principles

Environmental

Our Planet

Achieve net zero CO2e emissions by 2050 and a 50% reduction of carbon intensity by 2030

Our Services

Adopting and advancing technologies and adapting our services to participate in the energy transition and deliver on sustainability objectives of the Company and its clients

Social

Our Communities

Engagement with local communities to reduce the impact of our operations and to positively contribute to their environment where possible

Our People

Build on industry leading safety records; Attract, develop and retain the best talent to sustain a diverse, inclusive and performance-oriented working environment

Governance

Our Structure

No dual class shares, classified board, poison pill or supermajority provisions; Commitment to regular Board refreshment and Board diversity

Our Commitment

Performance based executive compensation in line with peers and aligns with all stakeholder interests to create strong returns

Addressing customers carbon reduction challenges

Circa 40% of R&D investments in 2021 address customers carbon reduction challenges

We are a citizen of the world – addressing our own, and the industry's effects on the planet to ensure a positive, sustainable impact.

We “walk the talk” by joining industry leaders in committing to a more sustainable and lower-carbon future, working to achieve net zero CO₂e emissions by 2050 and 50% reduction in carbon intensity by 2030.

Honesty, transparency and accountability lie at the core of this citizenship.

	Well Construction							Well Flow Management										Subsea Well Access				Well Intervention & Integrity											
	Casing technologies	Completions Technologies	Drilling Technologies	Conductor Driving & Slot Recovery	Cementing Technologies	Downhole Service Tools	Tubulars Products & Services	Well Test	DST	TCP	Fluid Sampling & Analysis	Metering Solutions	Pipeline and Flarestack Services	Early Production	Onshore Production Units	Enhancement Systems	Facility Upgrade	Operations and Maintenance	Water treatment	SSTTA	RWIS	IRS	LWI	Mechanical Slickline	Cased Hole Applications	Wireless Wells	Galea™	PDM	CoilHose	Octopoda™	Safewells®	Petroleum Engineering Solutions	
Access		X						X	X	X	X			X						X	X	X	X	X	X	X						X	
Optimize	X	X	X	X	X	X	X	X	X	X	X	X		X	X	X	X		X	X	X	X		X	X	X	X	X	X	X	X	X	X
Assure	X	X	X	X	X	X	X	X	X	X	X	X	X			X	X	X	X	X	X	X	X	X	X	X	X	X	X	X	X	X	X
Drive to Net Zero	X	X	X					X	X	X	X	X			X	X			X	X	X	X	X		X	X	X	X	X	X	X	X	X

Our Planet Road Map

Scope 1

Direct emissions from owned or controlled sources

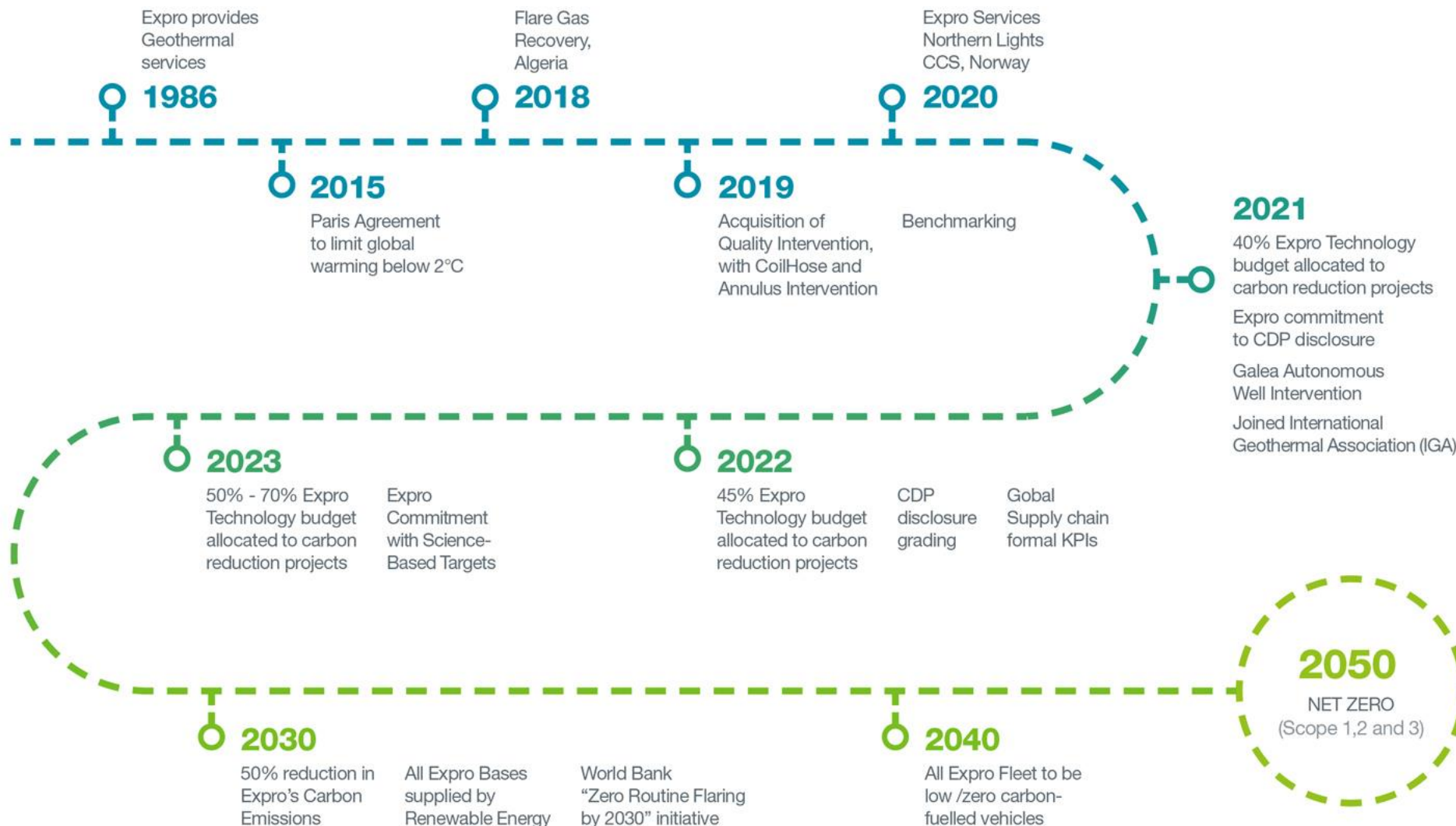
Scope 2

Indirect emissions from the generation of purchased electricity, steam, heating and cooling consumed by Expro

Scope 3

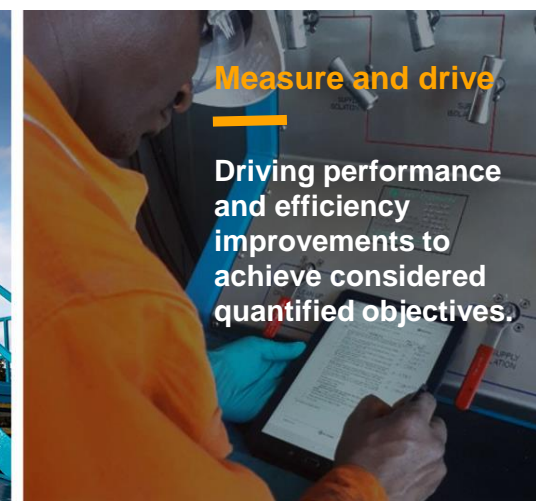
Includes all other indirect emissions that occur in Expro's value chain

Year on Year Scope 1, 2, 3 reduction



Commitment to sustainability

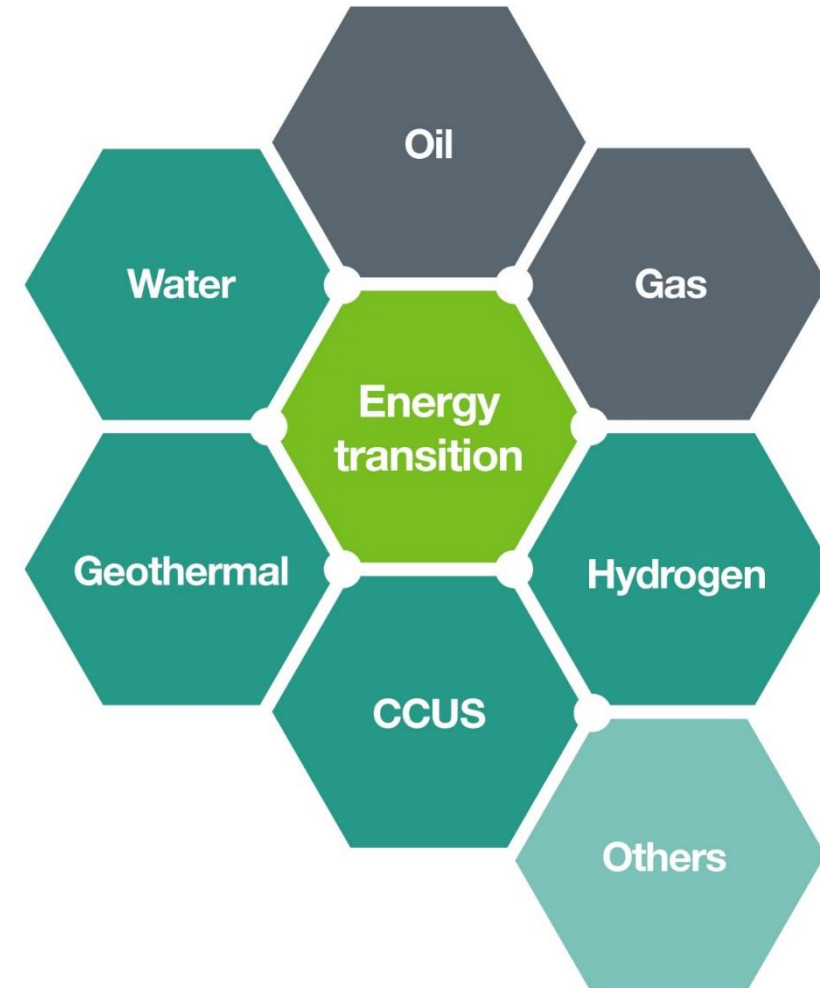
Expro is committed to reducing harm to the environment and promoting sustainable practices to achieve extraordinary performance.



Portfolio Shift

Our participation and focus

- We have transferable skills and services applicable to the emerging new energy segments
- We participate in most of these today
- Specific focus on geothermal and water
- Priority area for Expro's Portfolio Advancement team



Portfolio Shift

Circa 40% of R&D investments in 2021 address customers carbon reduction challenges

Customer drivers

(DATA, CapEx discipline and Net Zero)

- Lower cost
- Lower carbon
- Faster and better decisions

Extraordinary performance through technology and innovation

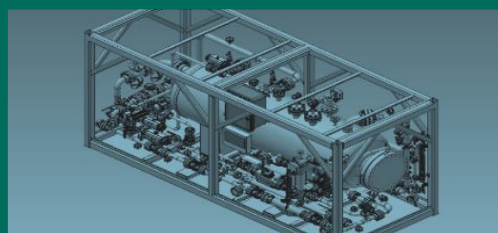
Production Optimization-Focused on Gas

Reduced footprint of ops (physical and carbon)

Flare-less and or flare redux / analytics

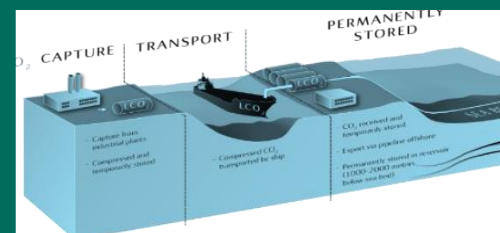
Energy market evolution (CCUS, GEO, Hydrogen etc)

Technology Investments Enhance today.



- Flared gas recovery / avoidance
- Vented gas avoidance
- Electric winches
- Greaseless cables
- 4 Phase Intelligent Separator with FlowMAX adjustable Weir System and Coriolis meter on all separator flow lines
- Autonomous well intervention system
- FlameEx automated safety shut off system
- CoilHose
- Rigless intervention
- Annulus intervention
- Multiphase Meter
- Advanced analytics
- Down Hole Fluid ID
- Reducing energy consumption by maximizing drilling efficiency
- Electric tool development
- Hydraulic Distribution Module Usage

Initiatives / projects Maximize efficiency.



- Northern Lights CCS in Norway
- Mercury in gas trains removal in Australia
- Flare gas recovery in Algeria
- Methane hydrate projects in Asia
- Geothermal projects globally
- Pipeline services in USA
- CSR activity, i.e. beach clean-ups, etc

Our commitments Transform tomorrow.



- OGUK Roadmap 2035
- OGTC Industrial Transition
- OGA Energy Integration project
- Input guidance to a sector deal on behalf of the UK government
- International Geothermal Association
- CDP
- COP26
- Optimize Expro's position in:
 - CCUS
 - Geothermal
 - Hydrogen
 - Water
 - Flare emission analysis
 - Gas to Power

Measure and Drive

Our commitment to the energy transition

Guided by science, CDP runs a global environmental disclosure system supporting companies, cities, states and regions to measure and manage their risks and opportunities on climate change, water security and deforestation.

CDP provides us with initial benchmarking to set the basic targets and the collection of data.

Expro's 2021 disclosure project is underway and initial feedback is very positive

Ongoing assessment of complementary disclosure frameworks



What we do.

Balanced portfolio – capabilities across the Well Lifecycle



Well Construction

Innovative, high value, low risk well construction solutions provider with a focus on operational efficiency and well integrity.



Well Flow Management

Proficiently gathering valuable well and reservoir data, with the utmost regard for well-site safety and environmental impact.

Fast-track cost-effective, early field production, optimization and enhancement systems.



Subsea Well Access

Ensuring safe, efficient and cost effective subsea well access systems across the entire lifecycle of the well.



Well Intervention and Integrity

Deployment, insight and enhancement solutions to enable reservoir and well surveillance, production optimization and asset integrity assurance.

Balanced portfolio – capabilities across the Well Lifecycle



Well Construction

Completion Technologies	Drilling Technologies
Casing Technologies	Conductor Driving & Slot Recovery
Cementing Technologies	Tubular Products & Services
Downhole Service Tools	



Well Flow Management

Well Test	Metering Solutions
Drill Stem Testing (DST)	Water Treatment
Tubing Conveyed Perforating (TCP)	Offshore Production Units
Fluid Sampling & Analysis	Enhancement Systems
Pipeline and Flarestack Services	Facility Upgrades
	Operations & Maintenance



Subsea Well Access

Subsea Test Tree Assembly (SSTTA)	Light Well Intervention (LWI)
BOP Spacer / Spanner Joint Assembly (BOPSJ)	Riserless Subsea Well Intervention System (RSWIS)
Open Water Intervention Riser System (OWIRS)	Hydraulic Intervention System (HIS)



Well Intervention and Integrity

Mechanical Slickline	Permanent Downhole Monitoring (PDM)
Cased Hole Services	Petroleum Engineering Solutions
CoilHose	SafeWells
Octopoda™ Intelligent Intervention	
Wireless Well Solutions	

Portfolio services across the lifecycle

Enhanced early visibility into the needs of customers and a broader scope of offerings across the entire well lifecycle

- Well Construction
- Well Flow Management
- Subsea Well Access
- Well Intervention & Integrity

Stage of field (years)	+ (8)	(6)	(4)	(2)	2	4	6	8	10	12	16	18+
Exploration & appraisal												
Development												
Production												
Abandonment												

Portfolio services across the lifecycle

A portfolio that spans the reservoir and well lifecycle

Product Line and associated services	Well Construction							Well Flow Management										Subsea Well Access				Well Intervention & Integrity										
	Casing Technologies	Completions Technologies	Drilling Technologies	Conductor Driving & Slot Recovery	Cementing Technologies	Downhole Service Tools	Tubulars Products & Services	Well Test	DST	TCP	Fluid Sampling & Analysis	Metering Solutions	Pipeline and Flarestack Services	Early Production	Onshore Production Units	Enhancement Systems	Facility Upgrade	Operations and Maintenance	Water Treatment	SSTTA	RWIS	IRS	LWI	Mechanical Slickline	Cased Hole Applications	Wireless Wells	Galea™	PDM	CoilHose	Octopoda™	SafeWells	Petroleum Engineering Solutions
Reservoir & Well Lifecycle																																
Exploration & Appraisal			X			X		X	X	X	X	X							X	X				X	X	X			X		X	X
Development	X	X	X	X	X	X	X	X		X	X	X							X	X	X	X	X	X	X	X		X	X	X	X	X
Production		X				X		X			X	X	X		X	X	X	X	X	X	X	X	X	X	X	X		X	X	X	X	X
Asset life extension	X	X	X	X	X	X			X	X	X	X	X		X	X	X	X	X	X	X	X	X	X	X	X		X	X	X	X	X
De-commissioning	X			X	X	X				X	X		X					X	X	X	X	X	X	X	X	X			X	X	X	X

Well Construction

An industry leader in tubular running services, tubular fabrication, and speciality well construction with a focus on complex and technically demanding wells.

The ability to anticipate and solve complex customer challenges with a portfolio of technology-focused well construction solutions

Strategic advancements

Continuously transforming the construction of wells by combining over 80 years of experience with a culture of aggressively developing differentiating technology.

Further advancements planned via:

- Optimizing process efficiency on the rig floor with advanced digital solutions
- Improving well integrity with continued metallurgical research and development in the handling of corrosion resistant alloys (CRA) and constructing robust cement barriers with proprietary technologies
- Mitigating risks of exposure with high capacity, gas rated threaded connections for large diameter tubulars

Strengths

- Industry pioneer in the handling of tubulars, supported by years of experience and engineering capabilities.
- Market leader in intelligent and HP/HT completions.
- Over 50 years of experience in conductor driving and associated services.
- Recognized leader in providing advanced fabrication services for fatigue sensitive tubulars and subsea components.
- Performance drilling technologies backed by experienced technical support
- Well servicing tools with in-class leading ratings and capacities for the most demanding wells.
- Game-changing cementing technologies that establish well barriers reliably while improving safety on the rig floor.



Key stat

Industries top 5 heaviest strings installed

2,435 Kip

(Heaviest)

Key stat

Number of wells constructed per year

~4,000

Key stat

Addressable market

\$3.8bn

Well Flow Management

The sector's most proficient provider of well flow management solutions for almost 50 years.

We provide global, comprehensive well flow management systems to proficiently gather valuable well and reservoir data, with the utmost regard for well-site safety and environmental impact.

Expro further support full life-of-field through **production to abandonment** with innovative and agile solutions.

Strategic advancements

Adapted to post 2014 decline in E&A activity by increasing focus on brownfield production related opportunities.

Further planned advancements:

- Maintaining market leadership in demanding environments
- Providing fast track production optimization solutions
- Progressing decarbonization and environmental activity
- Emissions Measurement & Management
- Carbon Capture and Underground Storage
- Remote/automated Well Test & Production solutions

Strengths

Fully integrated well clean-up, exploration and appraisal services including:

- Largest global fleet of innovative, reliable flow management equipment
- Specialists in demanding high rate gas flow back and HT/HP systems – with industry-unique ultra-high rate (+100Mscfd) equipment & metering expertise
- Real-time data acquisition and metering - improving efficiency and lowering operator service cost
- Fluid sampling and analysis at the wellsite
- Unique trace element capture and analysis specialities
- Efficient sand, solids and water management capabilities
- Fast-track extended well test and EPF solutions



Key stat
Successful Well Test Operations

+10,000
(+500/Y)

Key stat
Global Well test Packages

+200

Key stat
DST Operating Efficiency – last 5 years

99.8%

Subsea Well Access

Market leading technology provider, ensuring safe well access and optimized production.

Providing the most reliable, efficient and cost effective well access systems, throughout the lifecycle of the well.

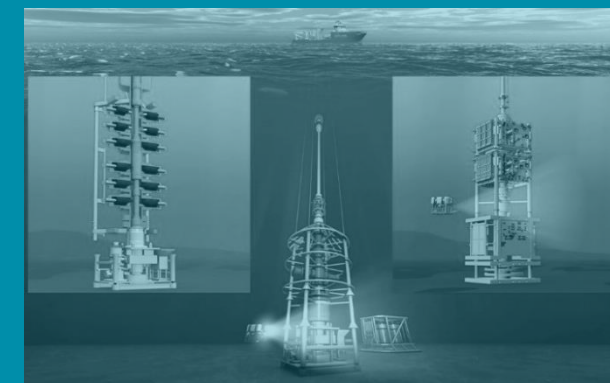
Strategic advancements

Full portfolio of subsea well access solutions derived from a foundation of 25+ years of technology leadership in Subsea Test Tree Assemblies

- Maintain leading position in subsea test tree systems due to advanced technologies and demonstrated reliability
- Complete subsea well access portfolio ensuring safer and efficient subsea well intervention throughout the life cycle of the subsea wells
- System integrator ensuring that all sub-systems function together in a subsea well intervention system

Strengths

- Leading provider of Subsea Test Tree Assemblies
- Barrier isolation, disconnect capability, and strip through & seal/ shear & seal technology to safely manage the containment of hydrocarbons
- Integrated approach to well access and integrity to ensure safe well access thought the lifecycle of the well
- Subsea control & valves designed internally and internal capability to carry out bespoke solutions to meet the relevant challenges faced thought the life cycle of the well
- Intervention Riser System increases efficiency, removing the necessity to deploy marine riser and BOP
- Expro Riserless Well Intervention System is a cost effective, rapid deployment and operation



Key stat
Expro market share in SSTTA systems

~ 57%

Key stat
Largest large bore global SSTTA fleet

~ 75 strings

Key stat
Subsea operations

3,000+

Well Intervention and Integrity

A leading global provider of well intervention services.

A safer and smarter well integrity and intervention solutions partner.

Strategic advancements

Continue to expand technology to provide critical well data and services that assure well integrity and optimize production

Market leadership will be sustained by:

- Leveraging our global operating footprint and relationships to deliver cost-effective, innovative solutions and reduce carbon emissions
- Continued development of technologies and services required for the energy transition
- Extension of intervention services including autonomous slickline
- Holistic well integrity management services; assurance, remediation, monitoring and reporting
- Intelligent software solutions which predict critical well parameters

Strengths

- World's largest independent wireline service supplier
- Offering leading-edge technologies and solutions that optimize performance from existing well stock and advance operators energy transition roadmaps
- Well Integrity management and software solutions
- Octopoda™ provides a unique annulus intervention capability to assure well integrity and enhance production
- CoilHose provides a lower cost, more efficient alternative to coiled tubing
- Real time data capture and interpretation performed at the well site



Key stat
Expro market share

10%

Key stat
Asset fleet packages

~250

Key stat
Runs per month

12,000

Our new technology

Discover what's possible

Inspire | Create | Differentiate

Innovation is important to us.

Our determined commitment to product portfolio enhancement, increasing sophistication in technology and the application of resources and IP development will ensure that Expro goes beyond merely meeting customer needs, but addressing our impact on the future. We want to be more relevant in today's world.

We're open. We are a business that thinks ahead. We're bold. And we're direct. It's a way of working that helps you address your critical energy challenges of today.

Changing for the better.



Innovative, future-facing technology



We are a visionary market influencer, capable of designing and deploying novel solutions that win the day by leveraging innovative, future-facing technology.

Our solutions continuously challenge established methods of conducting operations in fresh and bold ways.”

Innovate with purpose

What we are doing

- **Digital transformation:** Evolving our digital initiative to unleash the power of data within our business practices to create a unique customer experience
- **Partnership:** We continue to build and sustain high value partnerships to support the unique customer experience we create
- **Planet:** We are advancing and developing technologies to help create a lower carbon future and participate in maximizing recovery
- **Intelligent automation:** We are looking at ways to increase accuracy and uptime, improving safety, reducing costs and personnel on board



Galea™ Autonomous Well Intervention System

Ensuring production continues and is optimized for the well conditions

A fully automated, efficient and cost effective solution to keep your well producing while reducing the environmental impact of your operations

- Reduction in deferred production
- Reduction in operational overheads
- Wax scraping intervals defined by well conditions rather than availability of wireline crew and equipment
- Reduced HSE exposure for personnel due to reduced time spent at well site
- Reduced environmental impact to field and surrounding areas
- Allows production to continue in remote locations or areas that are inaccessible to wireline crews at certain times of the year
- Potential for 24/7 monitoring from anywhere in the world
- Elimination of accidental wire breaks



CoilHose Light Well Circulation System

Delivering a safe, unique, versatile and cost effective service to create low operational resource requirements solution

The CoilHose Light Well Circulation System (LWCS) provides a lower cost, more efficient alternative to traditional coiled tubing systems

- Field proven technology with more than 100 runs
- Minimizes the loss of hydrocarbon production
- Reduces overall cost of intervention
- Compact with relatively small footprint
- Mobile and flexible set-up
- Lower number of personnel required (4-6 multi-skilled crew)
- Can be rapidly deployed universally (3-4 hours) on lightweight topsides with limited deck space



Annulus Intervention System – Octopoda™

Providing remediation of well integrity issues without the use of a workover rig

A truly unique service to assure well integrity and enhance production

- Innovative and unique system to access well annuli
- Enables inspection and repair of annulus integrity issues
- Rapid mobilization
- Modifications for different wells
- Increased oil recovery through revitalization of shut in wells
- Environmental and groundwater protection

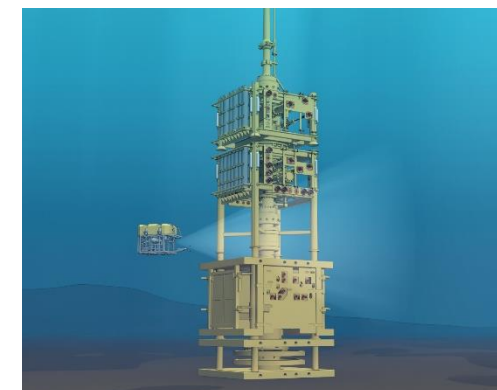


Open Water Intervention System

**Lower Riser /
Emergency Disconnect
package design has
extensive track record
of over 900
deployments**

**Compact and lightweight system
(approx. 50Tonnes)**

- Deployed from client rig or specially adapted vessel
- Provides well control and disconnect across the life cycle of subsea well
- Ability to deploy full range of intervention services
- Allows the deployment of Coil Tubing with ability to shear & seal up to 2-7/8" coiled tubing and wireline/slickline with gate & seats
- Rated to 10,000psi, 7-3/8" Production Bore & 2-1/16" Annulus Bore and up to 3,000m water depth
- Design Temperature Range 0°F to 250°F
- H2S NACE MR 0175 + CO2 service class
- IWOCS supplied with XT control capability, negating the requirement for additional 3rd parties
- Controls through direct hydraulic and electrohydraulic systems
- Interface with horizontal and vertical trees

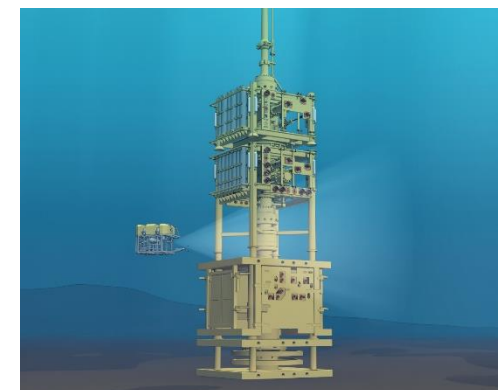


Light Well Intervention

Expro are seen as best in class as a well access service provider

Increases efficiency by removing the need to deploy marine riser and Subsea BOP

- Our Intervention Riser System safely establishes and maintains well access throughout riser to surface operations, replicating the functionality of the blowout preventer
- Deployed from client rig or vessel with derrick
- Ability to deploy heavy duty intervention i.e. CT and all other intervention tools
- Compact and lightweight system
- Rapid deployment time
- Rated to 10,000psi and 3,000m water depths
- Xmas Tree controls supplied as part of package, negating the requirement for additional 3rd parties
- Can interface with both horizontal and vertical Xmas Tree systems

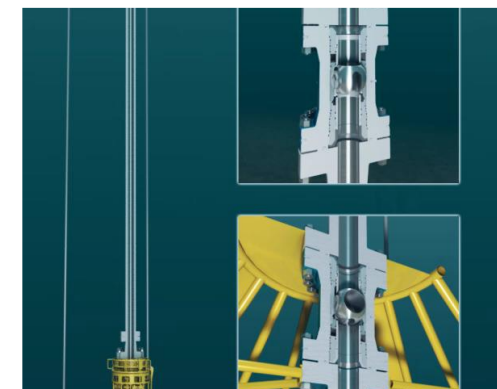
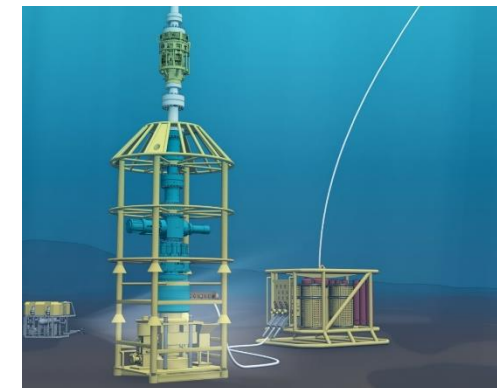


Riserless Subsea Well Intervention System

More than 70% of all life of well intervention requirements can be performed with a RWI system

Compact and lightweight system (approx. 45 Tonnes)

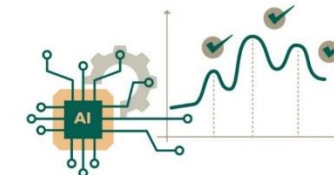
- Deployed from an Expro managed mono-hull vessel, either through a moonpool with smart tower system or “over the side” with AHC wireline mast or from a modified client vessel
- Provides means of well control and disconnect
- Rated to 10,000psi, 7-3/8” Production Bore and up to 3,000m water depth
- Design Temperature Range 0°F to 250°F
- H2S NACE MR 0175 + CO2 service class
- System utilises Expro’s ball valve technology with ability to shear & seal on intervention media
- Ability to deploy slickline, E-Line and Coilhose through water
- Allows for the intervention tool strings up to 22m long
- IWOCS through direct hydraulic and electrohydraulic systems
- Interface with horizontal and vertical trees



iCAM[®] Connection Analyzed Make-up System

The iCAM[®] system's artificial intelligence engine and machine learning capabilities provide automated evaluation of connection make-up data

- Automated evaluation and prediction of CAM data using machine learning and big data analytics
- More accurate and consistent, data-driven decisions and recommendations to increase connection integrity
- Reduces POB and workload
- Can be monitored remotely through Frank's DISPLAY[™] technology in real-time, globally
- Reduces connection lay-downs and reworks
- Designed with operations in mind to increase reliability and maintain, or improve, current RIH efficiency
- Phased approach with increasing capability at each deployment



2019 Bronze
Award Winner

2019 New
Technology
Showcase
Winner

XT4™ GT Connection

Our XT4™ GT premium weld-on connector delivers reliable seal performance in the most complex deep-water and ultra-deep-water applications

Extreme Tension

Extreme Compression

Extreme Bending

Extreme Temperature

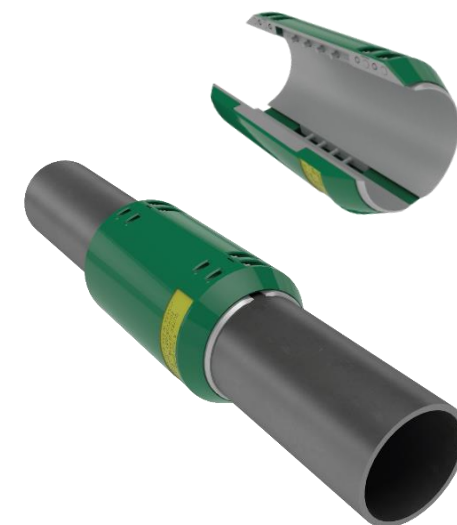
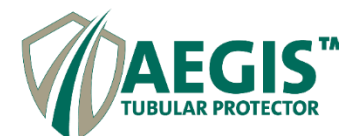
- The 22" XT4™ GT is a certified gas-tight connector in accordance with the latest API RP 5C5:2017 CAL I standards
- The connection was tested on 22" x 1.50" X80 pipe while also tested to the severity of API RP 5C5:2017 CAL III standards in which the connection was subjected to elevated temperature testing at 275°F prior to achieving 95% in both Test Series A and B
- The 22" XT4™ GT is a deep-stab connector that features an internal metal-to-metal seal, external environmental O-ring seal with a back-up PTFE ring seal, tapered thread profile, tapered thread cone, and contoured noses and shoulders
- Consistent 3.5 turn makeup
- High Makeup Torque resists backout (Min. 72,000 Opt. 76,000 Max. 80,000 ft-lb)
- With a strong background in Tubular Running Services, the XT4™ connection was designed to be installation friendly and is compatible with a complete range of handling equipment
- The XT4™ connection can be made available with a completely hands-free Spring ARK Anti-Rotation Key



AEGIS™ Tubular Protector

The AEGIS™ Tubular Protector offers a powerful solution to the excessive tubular wear and high torque experienced in today's complex and demanding drilling applications

- Limits casing and drill string wear and reduces torque
- Not dependent on stand length or derrick height limitations
- Does not extend the length of the original drill string
- Eliminates potential for marking pipe and de-rating drill string
- Robust design, durable for open hole applications
- Compatible with wired drill pipe applications
- Requires fewer tools than other similar solutions on the market



BRUTE® Packer System

BRUTE® Packer System utilizes the BRUTE® High Pressure-High Tensile Packer, along with the field proven BRUTE® Storm Valves and BRUTE® Circulation Valves, to provide a solution to multiple well suspension and well testing challenges

- API 11D1 & ISO 14310 V3 / 19AC V3 Annex A/D validated for reliable quality and performance control
- Modular design increases range of application and operational efficiencies while reducing rig site inventory
- Best in class packer ratings with combined loading capability up to 1MM lbs. and 10,000 psi pressure differential
- Simple, non rotating designs allows for faster valve operation to significantly increase operational efficiencies and rig time savings
- Newly released 22" BRUTE® System available for deployment.



2020
Finalist – Best Well Integrity
BRUTE®

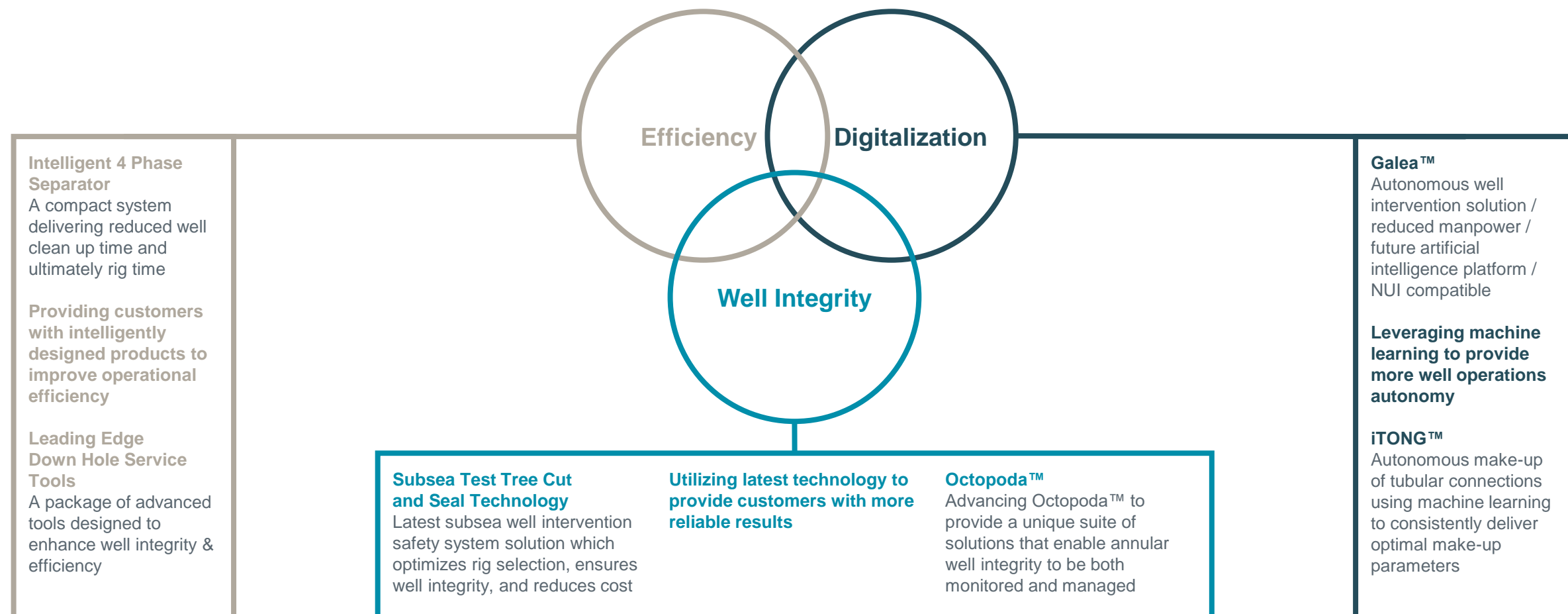


Our future technologies

**Harness the power of data
to create a lower carbon future**

Future-facing Technologies

Innovative Solutions Focused On Automation, Digitalization And Energy Transition



Our achievements

Nearing 80 years of success



2012

Subsea UK Award

Outstanding safety record



2014

Subsea UK Award

Global exports



2015

Offshore Achievement Awards

Innovator Award -
Wireless Well Solutions



2017

NOIA Award

Jet String Elevator



2017

BMEA Award

MEGA Elevator



2018

Spotlight on new technology

Next Generation
Landing String (NGLS)



2017

OHSA Award

SKYHOOK® Wireless
Cement Line Make-
Up Device



2019

Hart's E&P Award

CLS - Stands



2019

World Oil Award

Jet String Elevator



2020

World Oil Award

SKYHOOK® Wireless
Cement Line Make-
Up Device



2020

Hart's E&P Award

Rack Back Console



2021

RoSPA

Order of distinction
- 17th consecutive
gold RoSPA

Our regions

Asia Pacific (APAC)



Safety is at the heart of everything we do. We listen to our customers and deliver bespoke services.

Mrinal Vohra,
Vice President

Key stat

Lost Time Injury Free (LTIF)

15M exposure hrs
(circa 9 years)

Key stat

Positive Intervention Good Behaviour Cards
(Average per person)

27

What makes us different?

- We continuously strive to bring new service offerings to our clients, thereby expanding our service offerings
- Within Expro our region performs the highest amount of DST & TCP jobs
- We run nearly 100 runs a day of slickline
- We are praised by our clients throughout the region for regularly delivering impeccable service quality
- We tailor solutions for our clients to ensure their objectives and expectations are surpassed
- We recognize that developing our people is fundamental for delivery of our client's objectives; we invest in our people across the value chain in technical and management training
- We are our client's first choice for services such as deep water subsea landing strings and providing high flow rate gas testing solutions. Our delivery and track record speaks for itself
- We partner with our clients in addressing their problems, in doing so we have gained their respect and become trusted partners. We have many engineers working in the customer's offices



Operational Areas

Australia, New Zealand, Brunei, China, India, Indonesia, Malaysia, Philippines, India, Thailand, Vietnam, Japan, Myanmar

Employees

1,285

Countries

12

Clients include

Shell, Inpex, Exxon, Chevron, BSP, ENI, Woodside, Pertamina, ONGC, Total, Petronas, PTTEP, CNOOC, Hess, HOEC, Beach, Mubadala, Santos, Medco

Europe & Sub Saharan Africa (ESSA)



The safety and quality standards of our people enable Expro to deliver the best services taking genuine pride in what we achieve.

Colin Mackenzie
Vice President

Key stat

Customer satisfaction rating

94%

Key stat

Recipient of the RoSPA order of distinction for safety performance 2020

What makes us different?

- We turn up differently, demonstrating a clear focus on our customers and we are driven to deliver a quality solution
- We see safety performance at the heart of our success
- We have a willingness to work with others in a collaborative manner to develop solutions
- We offer solutions to your challenge, we offer bundled service offerings matching our customer requirements
- We drive continual improvement throughout our operations
- We deliver a comprehensive portfolio of products and services
- We are well established in a broad range of countries where we have developed an extensive track record
- We introduce new technologies and promote innovation through the organisation



Operational Areas

UK, Kazakhstan, Norway, Netherlands, Azerbaijan, Russia, Cyprus, Israel, France, , Ukraine, Ivory Coast, Ghana, Nigeria, Cameroon, Chad, Gabon, Congo, Angola, South Africa, Mauritania, Senegal, Denmark, Turkey, Germany, Mozambique, Tanzania, Turkmenistan, Kenya

Employees

1,938

Countries

30

Clients include

BP, ConocoPhillips, Eni, Equinor, ExxonMobil, Petronas, Repsol Sinopec, Total, Tullow, Wintershall

Middle East and North Africa (MENA)



Safety and service quality have always been the core foundation of our performance. The latest pandemic has put this to the test - we not only succeeded but also exceeded. We are always driven by excellence, inspired by innovation.

Hussein Elsisi,
Vice President

Key stat

Oil and gas production through our production packages

170+ mbopd
450+ mmscfd
50+ mmscfd flare avoidance

Key stat

Customer satisfaction rating

93%

Key stat

Positive Intervention Good Behaviour Cards

6,875+

What makes us different?

- We embrace partnership with customers through our focus on their challenges and we support them by developing bespoke solutions. We have an appetite to look outside the box for non-core or not in-house services and successfully deliver them
- We are recognized by delivering quality services against our commitments to our customers
- We are different from our competitors. Our people differentiate us, they passionately deliver our services meeting the clients job objective with minimal disruption to their activities
- We nurture an Expro 'family' culture, and combine it with our creative can-do attitude
- We are the pioneer region for Sonar Meters, MPFM, BB and Production Optimisation; offering an array of different unique applications to our customers in production domain
- Expro MENA has been successful in creating collaborative business with several partners, including some of our major competitors, capitalizing on our technical knowhow and our local market knowledge
- We are our customer's local partner. We thrive to understand customer needs and provide tailored solutions delivered to the highest international level of safety and quality



Operational Areas

Algeria, Saudi Arabia, Egypt, Qatar, United Arab Emirates, Iraq, Libya, Oman, Kuwait, Tunisia, Lebanon, Kurdistan

Employees

1,369

Countries

12

Clients include

Sonatrach, Saudi Aramco, ADNOC, Total, NOC, BP, Apache, Eni, Shell, Qarun, Khalda, Bapetco, Agiba, Qatar gas, and MOG

North and Latin America (NLA)



Safety and quality are essential to our success today and in the future. Our execution of these elements while on the job relies on a strong safety culture, as does our ability to service our customers and remain competitive.

Toby Pitre,
Vice President

Key stat

Exxon Mobil's sword

**Most valuable
Business Partner
Award**

Key stat

Reduction in DROPS from 2019

50%

Key stat

NAOC – 15,693 STAR cards submitted YTC

**Includes 12,182 (77%
Safe Observations)**

What makes us different?

- We have a willingness to work with our customers to ensure success at well center
- We strategically deploy technology and skilled team members to maximize utilization and exceed our customer's expectations
- Our culture creates an expectation of winning that transforms opportunities into victories
- We are forthright in all of our business interactions and conduct our business with the highest ethical standards
- We execute with excellence and reliability, while delivering cost-effective goods and services
- Continued reduction year on year in the overall total number of HIPOs, MEPOs and LOPOS
- Reduction of 49.3% in overall incidents from 2019 to 2020



Operational Areas

US, US land, Canada, Trinidad, Gulf of Mexico, Argentina, Bolivia, Brazil, Ecuador Colombia, Guyana, Mexico, Suriname

Employees

2,158

Countries

12

Clients include

Chevron, Conoco, Equinor, Oxy, Shell, BP, Exxon, Kinder Morgan, Enterprise, Energy Transfer, YPF, Petrobras, Perenco, Ecopetrol, Pemex, ENI, Repsol, Halliburton, Baker Hughes and Schlumberger

We are Expro

We are the future engineers.



Working for our clients across the entire well life cycle, Expro is a visionary full-cycle energy services expert offering novel, insightful solutions, dependable competency and award-winning safety.

Combining innovative, future-facing technology with high-quality data, we have a reputation for extraordinary performance that keeps your operations running smoothly.

Partner with us to help address the critical energy challenges of today and engineer the answers of tomorrow.



EXPRO