



EXPRO[®]

Corporate overview

2024

NYSE: XPRO | expro.com

FULL-CYCLE ENERGY SERVICES PROVIDER



Working for our clients across the entire well life cycle, Expro is a visionary full-cycle energy services expert offering novel, insightful solutions, dependable competency and award-winning safety.

Combining innovative, future-facing technology with high-quality data across well construction, well flow management and production, subsea well access, and well integrity and intervention, we have a reputation for extraordinary performance that keeps your operations running smoothly.

We're right-sized, right now to deliver world-class services. Being nimble means we're not locked into unyielding ways of working, we're more responsive to your changing needs and always ready to help.

We're mindful of our impact on the planet, as well as the health and well-being of our workforce.

Partner with us to help address the critical energy challenges of today and engineer the answers of tomorrow.

OUR VISION



Recognized for extraordinary performance, championing safety and long-standing partnerships, Expro is focused on unleashing the power of data and digital transformation as key drivers that enable our customers to make more timely and informed decisions.

Our license to work is founded upon a solid reputation for competency and dependability, an innovative and unified worldwide team whose skills are constantly evolving with the industry, deep insight into the needs and preferences of our customers and unrelenting commitment to customer service quality.

We are a visionary market influencer, capable of designing and deploying novel solutions that win the day by leveraging innovative, future-facing technology. Our solutions continuously challenge established methods of conducting operations in fresh and bold ways.

With a well-equipped, well-motivated workforce, we're right-sized, right now to deliver a uniquely satisfying customer experience. We are flexible and responsive whilst providing a strong, balanced services portfolio to deliver world-class service and technology as a go-to partner in our selected markets. We win business because we are the best, not because we are the biggest.

Expro will always put the right people forward to do the right work for the right customers in the right places. But we have a duty to go far beyond this. We are a citizen of the world – addressing our own, and the industry's effects on the planet to ensure a positive, sustainable impact. We "walk the talk" by joining industry leaders in committing to a more sustainable and lower-carbon future, working to achieve net zero CO₂e emissions by 2050 and 50% reduction in carbon intensity by 2030. Honesty, transparency and accountability lie at the core of this citizenship.

This vision is what will make us visible, distinctive and highly relevant in the industry, creating value for our customers, employees and investors alike. It's an approach that will attract new customers and enhance existing business in the years ahead. And it will ensure we can attract, retain and nurture a talented and diverse workforce to turn our growth ambitions into reality.

FUTURE ENGINEERS™

People are the
most important.
And every Expro person
engineers our future.

We are the drivers of
our methodologies.
We are confident.

We can draw out the right
answers which attract
the right customers.



Company highlights

More than 85 years of market leadership

- **Leading full-cycle energy services expert** with an outstanding reputation for future facing technology driven-solutions, service quality and HSE
- **Broad portfolio of products and services** across the full well lifecycle providing scale, breadth and stability
- **Future-facing technologies** that allows company to participate in **energy transition** as we advance our journey to net zero achieving a 50% reduction in CO₂e by 2030 and net zero by 2050
- **Global operating footprint** with scale / scalable presence in key markets
- **Attractive growth opportunities**, focused on leveraging relationships with NOC / IOC customers and life-of-field capabilities
- **Strong financial profile** that reduces risk and increases strategic flexibility



High calibre management team guided by our core values



Mike Jardon
Chief Executive Officer



Alistair Geddes
Chief Operating Officer



Quinn Fanning
Chief Financial Officer



Natalie Questell
Senior Vice President,
Human Resources



Steve Russell
Chief Technology Officer



John McAlister
General Counsel



Copyright 2024 Expro®. All rights reserved.

People

At the heart of our success. We recognize the value of our people and are committed to providing the working environment, encouragement and personal development to achieve our goals.

Performance

Getting it right first time, every time. We are passionate about safely delivering excellent quality customer service. We embrace teamwork, individually and collectively assuming responsibility for delivering the highest value to all our stakeholders.

Planet

We are committed to reducing our own environmental impact. We will play a relevant role in the energy transition towards a lower carbon future. We are also determined to make a positive impact wherever we operate.

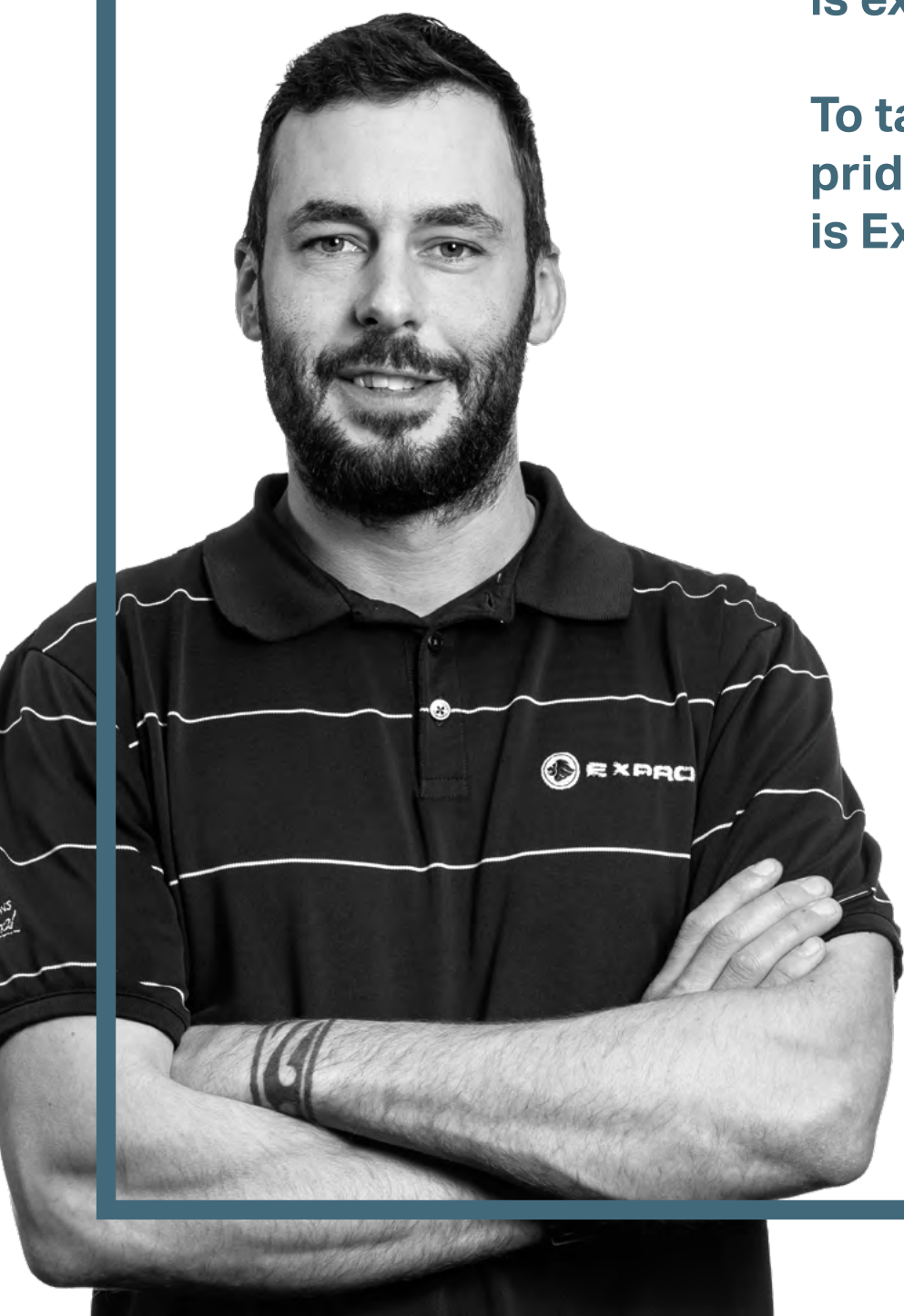
Partnerships

We listen to our customers and build relationships to understand their needs. We innovate with purpose to apply, adapt or develop our technologies and services to provide timely and effective solutions.

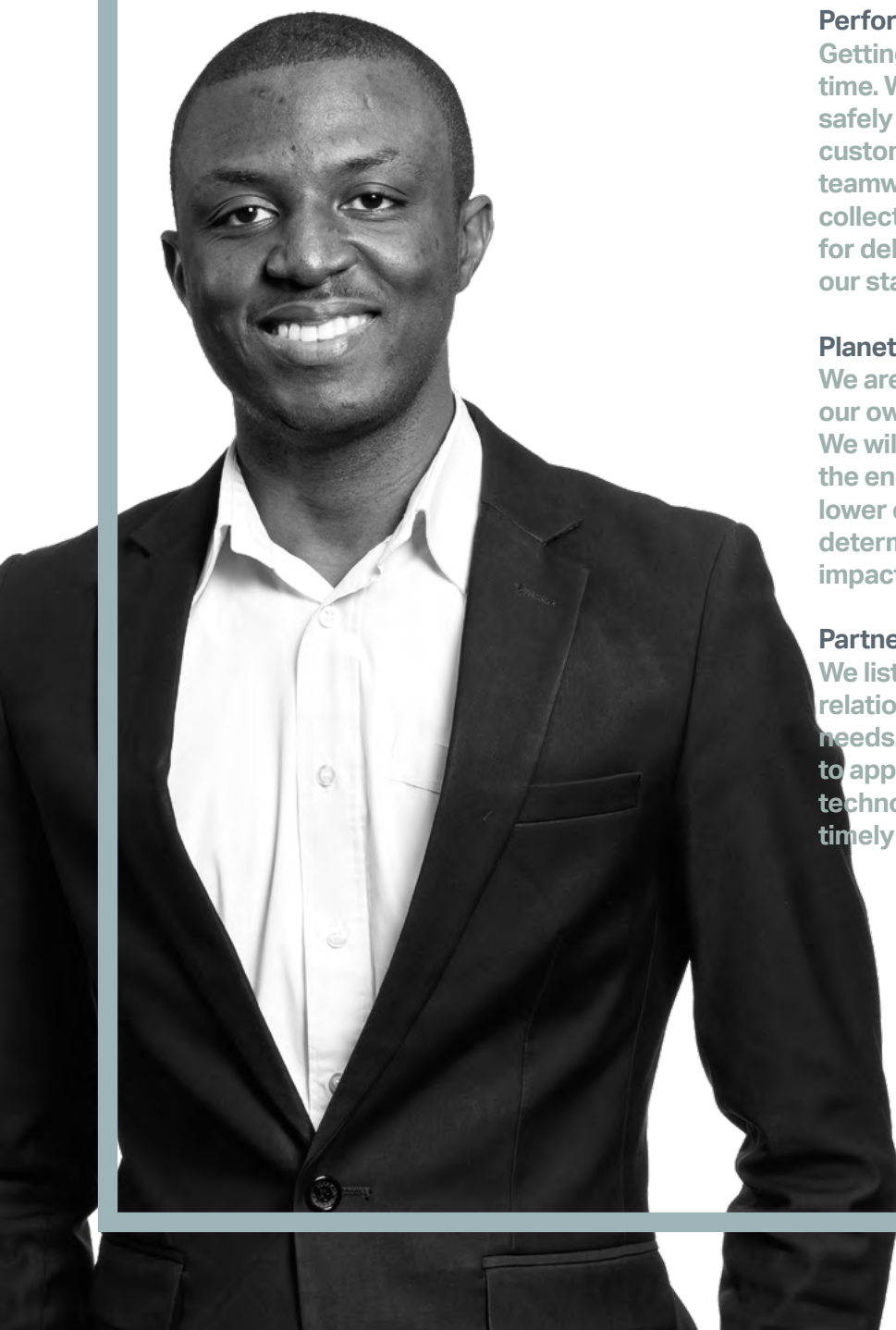
OUR MISSION

**To know everything
about your subject
is excellent.**

**To take genuine
pride in everything
is Expro.**



OUR VALUES



People

At the heart of our success. We recognize the value of our people and are committed to providing the working environment, encouragement and personal development to achieve our goals.

Performance

Getting it right first time, every time. We are passionate about safely delivering excellent quality customer service. We embrace teamwork, individually and collectively assuming responsibility for delivering the highest value to all our stakeholders.

Planet

We are committed to reducing our own environmental impact. We will play a relevant role in the energy transition towards a lower carbon future. We are also determined to make a positive impact wherever we operate.

Partnerships

We listen to our customers and build relationships to understand their needs. We innovate with purpose to apply, adapt or develop our technologies and services to provide timely and effective solutions.

OUR BEHAVIORS



Think planet

We commit to reduce our environmental footprint and improve our local impact.

Be accountable

We take responsibility for and pride in our actions.

Champion safety

We strive to be at the forefront of safety, in everything we do.

Embrace teamwork

We work together to deliver an excellent service – we coach and learn from others.

Drive innovation

We inspire and innovate with purpose to seek out solutions for every challenge.

Partner customers

We build and sustain high value partnerships with our customers and colleagues.

Communicate effectively

Effective communication is key. We share information and respect everyone we work with.

Deliver quality

We focus on delivering operational excellence to all our stakeholders.

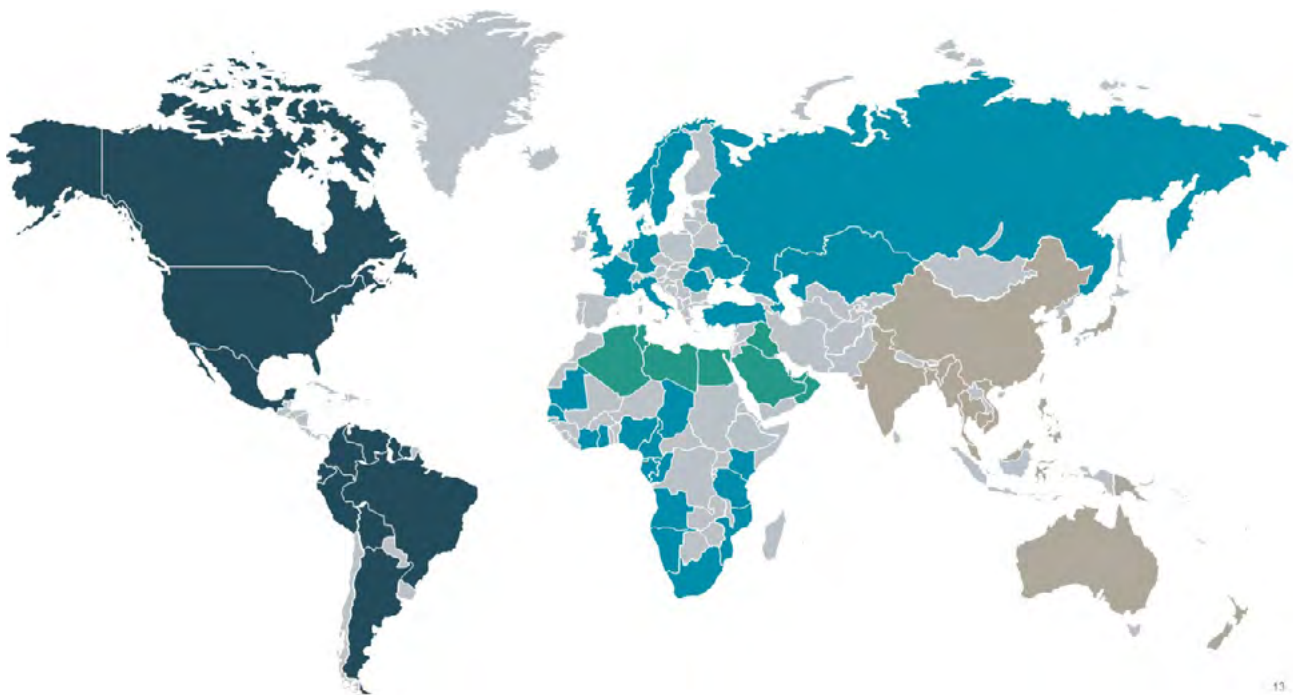
Over 85 years of market leadership

		Portfolio expansion	Acquisitions
1930 - 1960s	1938 Frank Mosing opens Frank's International, Louisiana	1958 First rental tool designed 1962 Conductor Driving and Slot Recovery added to offerings 1965 Tubular and Connector Technologies added to offerings	
1970 - 1990s	1973 Expro founded as a well testing and wireline company 1975 First oil produced from the Argyll Field	1978 Introduction of our first designed and manufactured 7 5/8" tong 1984 Industry first: 30" 500-ton handling tools 1983 Industry first: 36" tong	1987 Exal
1990 - 2010s	1995 Expro floated on London Stock Exchange	1978 Introduction of our first designed and manufactured 7 5/8" tong 1984 Industry first: 30" 500-ton handling tools 1983 Industry first: 36" tong	1998 Tronic Ltd and Saltus Sub Surface Services Ltd 2000 Tripoint Inc. Kinley Corporation 2006 Power Well Services 2008 Expro acquired by private equity consortium
2010 - now	2013 Frank's floated on New York Stock Exchange 2018 Successful capital restructuring 2021 Expro and Frank's International combine	2015 Industry record: Heaviest String Ever Run	2016 BLACKHAWK Cementing Technologies and Downhole Service Tools 2019 Quality Intervention (QI) 2022 SolaSense 2023 DeltaTek Global PRT Offshore

Extensive global reach

Expro employs over **~8,067 people in 70 countries**, offering a truly global service solution. Operating headquarters are in **Houston, United States**.

Regional headquarters are in **Aberdeen, Lafayette, Dubai, Houston and Kuala Lumpur**.



Europe & Sub Saharan Africa (ESSA)

Angola, Azerbaijan, Cameroon, Congo, Cyprus, Denmark, Equatorial Guinea, Ethiopia, France, Gabon, Germany, Ghana, Israel, Italy, Ivory Coast, Kazakhstan, Kenya, Mauritania, Mozambique, Namibia, Netherlands, Nigeria, Norway, Romania, Senegal, South Africa, Tanzania, Turkey, Turkmenistan, United Kingdom, Uganda

2,223 employees

North America and Latin America

Argentina, Bolivia, Brazil, Canada, Colombia, Ecuador, Guyana, Mexico, Suriname, Trinidad, USA, Venezuela

2,337 employees

Middle East and North Africa (MENA)

Algeria, Egypt, Iraq, Kuwait, Libya, Morocco, Oman, Qatar, Saudi Arabia, Tunisia, UAE

2,026 employees

Asia Pacific (APAC)

Australia, Bangladesh, Brunei, China, India, Indonesia, Japan, Malaysia, Myanmar, New Zealand, Papua New Guinea, Philippines, Singapore, Thailand, Vietnam Korea

1,481 employees

Always Championing Safety

QHSE Performance

- Customers value the reliability, quality and safety of Expro's services
- Established reputation for delivering operational and technical excellence that exceeds customer expectations and underpins Expro's brand
- Executive leadership, managers and employees are committed to delivering the highest standards of safety performance
- Recognized for Order of Distinction Award, 18 consecutive years by the Royal Society for the Prevention of Accidents (RoSPA) for health and safety performance
- Industry certified: API Q2, ISO 9001:2015 quality management system, ISO 14001:2015 environmental management, ISO 45001 occupational health and safety

Lost Time Injury Frequency (LTI) (million man hours basis)



Champion safety

We strive to be at the forefront of safety, in everything we do.

Safety global track record



Mike Jardon,
Chief Executive Officer



Safety is paramount in our organization. We pride ourselves on having a strong safety culture and we always encourage our employees to champion safety at every opportunity while we work.

North & Latin America (NLA)	Europe & Sub-Saharan Africa (ESSA)	Middle East and North Africa (MENA)	Asia Pacific (APAC)
Alaska 7 years LTI free	Ghana 14 years LTI free	Algeria 3 years LTI free	India 25 years LTI free
Trinidad 6 years LTI free	Nigeria 8 years LTI free	Egypt 3 years LTI free	Brunei 24 years LTI free
Brazil offshore 6 years LTI free	Norway 15 years LTI free	Iraq 12 years LTI free	China 23 years LTI free
Bolivia 8 years LTI free	Azerbaijan 10 years LTI free	Qatar 16 years LTI free	Malaysia 1 year LTI free
Colombia 24 years LTI free	Mozambique 19 years LTI free	United Arab Emirates 6 years LTI free	Indonesia 1 year LTI free
US Midstream 8 years LTI free	Kazakhstan 13 years LTI free	Saudi Arabia 3.5 years LTI free	Australia 1 year LTI free

Service quality



Alistair Geddes
Chief Operating Officer

“

Our license to work is founded upon a solid reputation for competency and dependability, an innovative and unified worldwide

team whose skills are constantly evolving with the industry, deep insight into the needs and preferences of

our customers and unrelenting commitment to customer service quality.

North and Latin America (NLA)

Customer job performance

2020	93.8%
2021	94.6%
2022	94.6%

Europe and Sub-Saharan Africa (ESSA)

Customer job performance

2020	93.8%
2021	94.1%
2022	93.3%

Middle East and North Africa (MENA)

Customer job performance

2020	93.1%
2021	95.4%
2022	94.8%

Asia Pacific (APAC)

Customer job performance

2020	92.4%
2021	94.1%
2022	95.4%

“

Expro team's performance exceeded expectations in safety, communication, planning and execution of the job. Always a pleasure to work with this team.”

“

Excellent planning and execution of completion. Proactive in ensuring the make-up of the 7 5/8" tubing was completed without any issues. *Need this crew back together for next installation.”

“

Your high-quality service was appreciated. Everyone in the team worked very hard for this great achievement either onsite or during the preparation. I am looking forward for the next challenges with confidence that Expro have a team capable of providing outstanding performance for a very demanding client.”

“

The TRS team stepped up during the recent casing run and made their presence felt. Due to their conscientious approach to safety and positive can-do attitude (and assistance from the drew crew) there were no delays to critical path operations.”

Energy transition

Citizen of the world

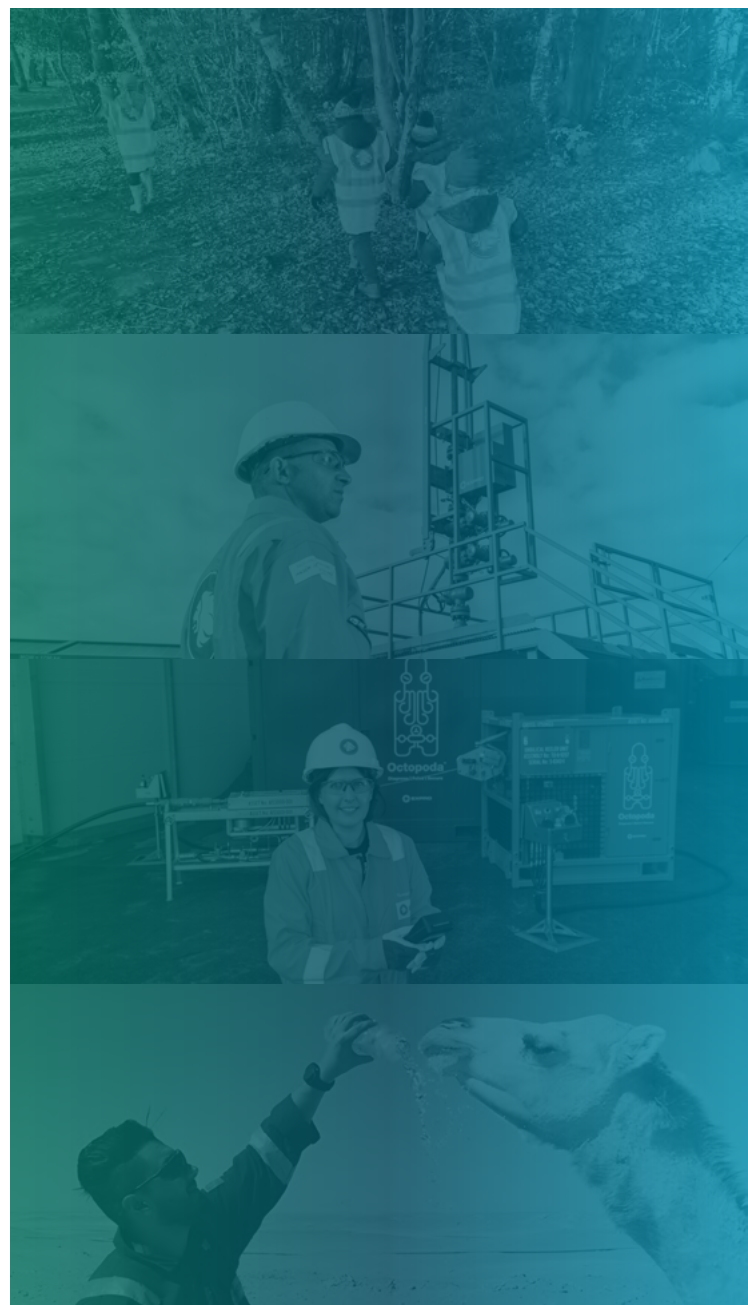
Enhance today. Maximize efficiency. Transform tomorrow.

Expro will always put the right people forward to do the right work for the right customers in the right places. But we have a duty to go far beyond this.

We want to be more **relevant** in today's world. We must reduce our own environmental impact. Our industry is part of the solution to address a lower carbon future – and **we are committed to playing our part**.

We are advancing and developing technologies to achieve this and participate in maximizing recovery. Our focus and commitment on innovation, efficiency, and digitalization better informs our customers, enables operational excellence and facilitates more timely and informed decisions.

Ultimately making an impact on the future of each and every one of us.



Citizen of the world - Our ESG commitment

Taking pride in being a responsible and transparent business that operates a clear set of environmental, social and governance principles

Environmental

Our Planet

Achieve net zero CO₂e emissions by 2050 and a 50% reduction of carbon intensity by 2030

Our Services

Adopting and advancing technologies and adapting our services to participate in the energy transition and deliver on sustainability objectives of the Company and its clients.

Social

Our Communities

Engagement with local communities to reduce the impact of our operations and to positively contribute to their environment where possible

Our People

Build on industry leading safety records; Attract, develop and retain the best talent to sustain a diverse, inclusive and performance-oriented working environment

Governance

Our Structure

No dual class shares, classified board, poison pill or supermajority provisions; Commitment to regular Board refreshment and Board diversity

Our Commitment

Performance based executive compensation in line with peers and aligns with all stakeholder interests to create strong returns.

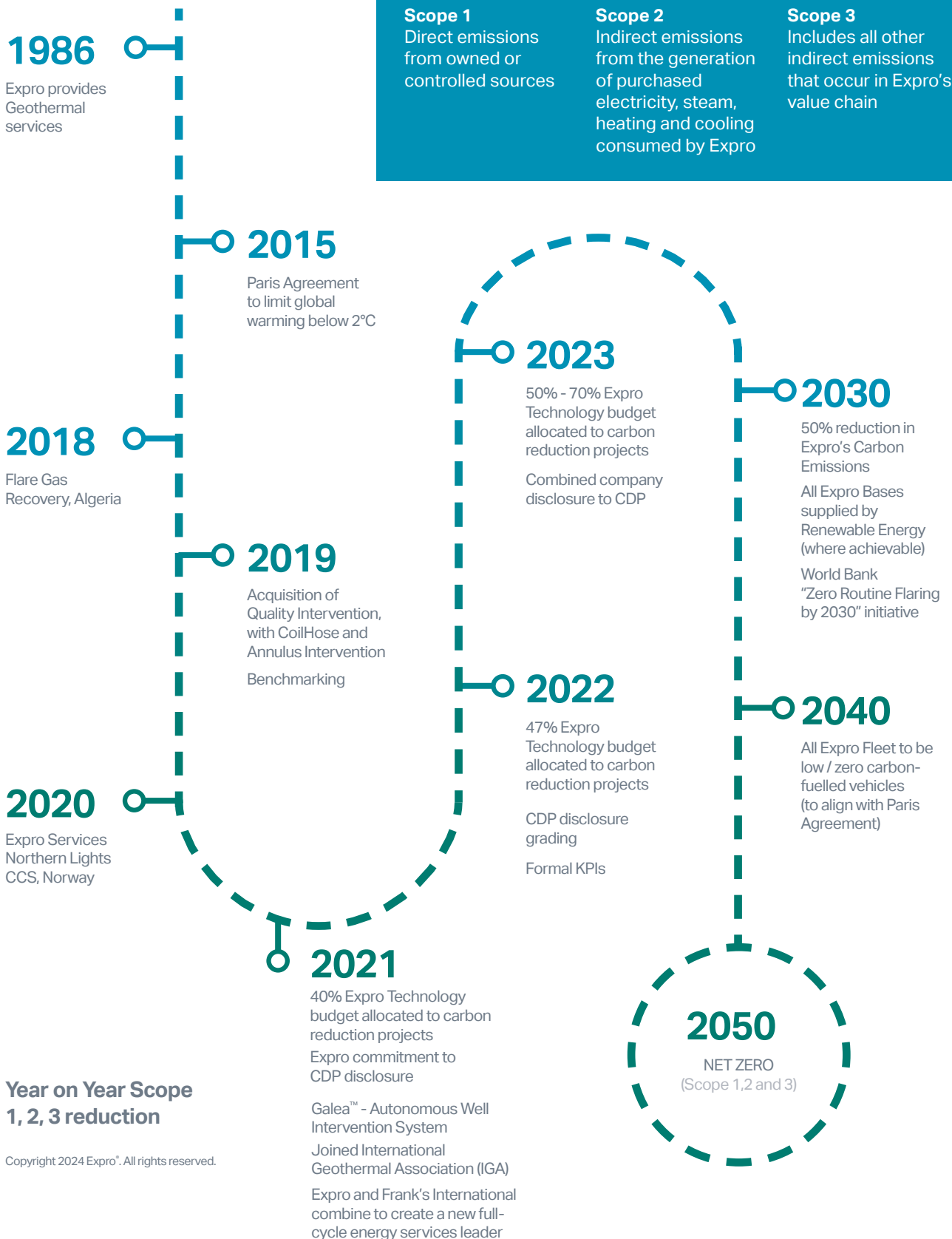
Addressing customers carbon reduction challenges

Circa 50% of R&D investments in 2023 address customers carbon reduction challenges

We are a citizen of the world – addressing our own, and the industry’s effects on the planet to ensure a positive, sustainable impact. We “walk the talk” by joining industry leaders in committing to a more sustainable and lower-carbon future, working to achieve net zero CO₂e emissions by 2050 and 50% reduction in carbon intensity by 2030. Honesty, transparency and accountability lie at the core of this citizenship.

		Access	Optimize	Assure	Drive to Net Zero
Well Construction	Casing Technologies		X	X	X
	Completions Technologies	X	X	X	X
	Drilling Technologies		X	X	X
	Conductor Driving & Slot Recovery		X	X	
	Cementing Technologies		X	X	
	Downhole Service Tools		X	X	
	Tubular Products & Services		X	X	
Well Flow Management	Well Test	X	X	X	X
	Drill Stem Testing (DST)	X	X	X	X
	Tubing Conveyed Perforating (TCP)	X	X	X	X
	Fluid Sampling & Analysis	X	X	X	X
	Acumen Metering Solutions		X	X	X
	Pipeline & Flarestack Services			X	
	Early Production	X	X		
	Onshore Production Units		X		X
	Enhancement Systems		X	X	X
	Facility Upgrade		X	X	
	Operations and Maintenance			X	
	Water Treatment		X	X	X
	Wireless Well Solutions				
	Permanent Downhole Monitoring				
Subsea Well Access	SSTTA	X	X	X	X
	RWIS	X	X	X	X
	IRS	X	X	X	X
	LWI	X		X	X
Well Intervention & Integrity	Mechanical Slickline	X	X	X	
	Cased Hole Applications	X	X	X	X
	Galea™	X	X	X	X
	CoilHose™		X	X	X
	Octopoda™		X	X	X
	Safewells®		X	X	X
	Distributed Fiber Optic Sensing Slickline (DFOS)				
	Petroleum Engineering Solutions	X	X	X	X

Our Planet Road Map



Commitment to sustainability

Expro is committed to reducing harm to the environment and promoting sustainable practices to achieve extraordinary performance.

Protecting our planet

50% reduction in CO₂e by 2030.

Portfolio shift

Adopting and adapting technologies and services to advance and develop the power of data, technology and innovation.

Achieve together

Making a positive contribution to the geographies and communities that we are part of.

Measure and drive

Driving performance and efficiency improvements to achieve considered quantified objectives.

A considered supply chain

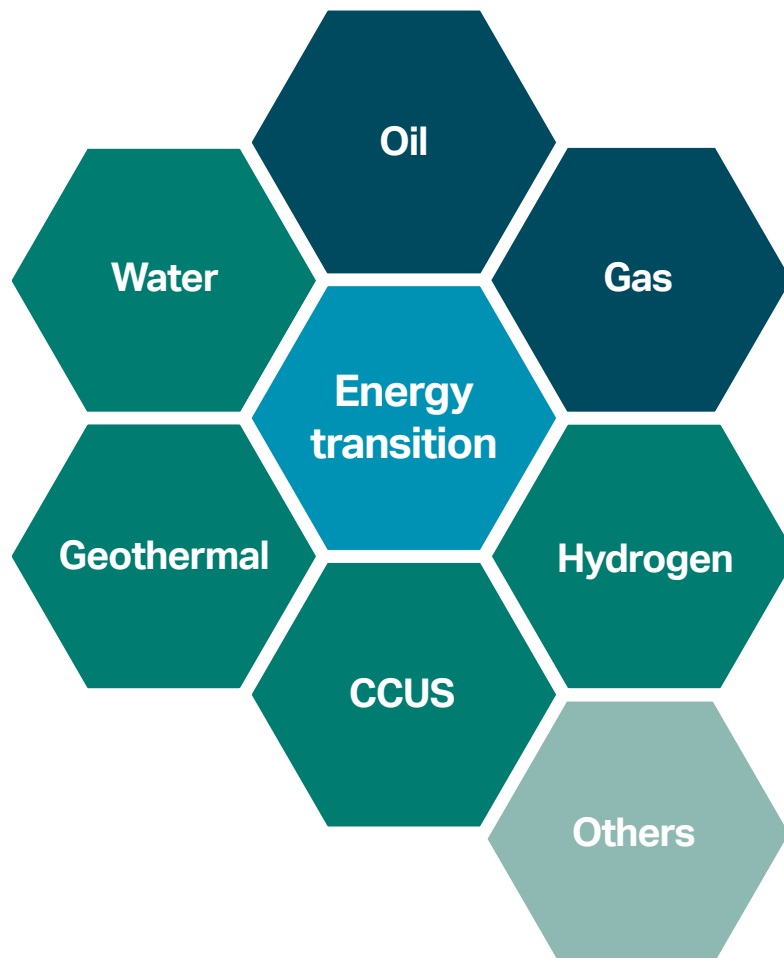
Taking a selective and methodical approach to ensure our value and supply chain are playing their part.

To achieve Net Zero by 2050.

Portfolio Shift

Our participation and focus

- We have transferable skills and services applicable to the emerging new energy segments
- We participate in most of these today
- Specific focus on geothermal and water
- Priority areas for Expro's Portfolio Advancement team



Portfolio Shift

Circa 50% of R&D investments in 2023 address customers carbon reduction challenges

Customer drivers

- (DATA, CapEx discipline and Net Zero)
- Lower cost
- Lower carbon
- Faster and better decisions

Extraordinary performance through technology and innovation

- Production optimization-focused on gas
- Reduced footprint of ops (physical and emissions)
- Flare-less and or flare redux / analytics
- Energy market evolution (CCUS, GEO, Hydrogen etc)

Technology Investments

Enhance today.



- Flared gas recovery / avoidance
- Vented gas avoidance
- Electric winches
- Greaseless cables
- 4 Phase Intelligent Separator with FlowMAX adjustable Weir System and Coriolis meter on all separator flow lines
- Autonomous well intervention system
- FlameEx automated safety shut off system
- CoilHose™
- Rigless intervention
- Annulus intervention
- Multiphase Meter
- Advanced analytics
- Down Hole Fluid ID
- Reducing energy consumption by maximizing drilling efficiency
- Electric tool development
- Hydraulic Distribution Module usage

Initiatives / projects

Maximize efficiency.



- Northern Lights CCS in Norway
- Mercury in gas trains removal in Australia
- Flare gas recovery in Algeria
- Methane hydrate projects in Asia
- Geothermal projects globally
- Pipeline services in USA
- CSR activity, i.e. beach clean-ups, etc.

Our commitments

Transform tomorrow.



- OEUK Roadmap 2035
- Net Zero Technology Centre
- International Geothermal Association
- CDP
- Optimize Expro's position in:
 - o CCUS
 - o Geothermal
 - o Hydrogen
 - o Water
 - o Flare emission analysis

Measure and Drive

Our commitment to the energy transition

- In 2021, we chose to disclose Expro's first submission of data and associated plans to address Scope 1, 2, and 3 emissions with CDP, a not-for-profit charity that runs the global disclosure system for investors, companies, cities, states and regions to manage their environmental impacts.
- We were pleased to achieve the score of C (Awareness) using the United Kingdom area of operations as a pilot. This consisted of 17 operational bases and was the first step in standardizing our process to address our environmental impacts.
- Our strategy for 2022 was for global disclosure to take a significant step forward on effectively implementing protocols across our global operations.
- We were proud to be awarded **B rating** which specifies Environmental Management commitment. Companies that score a B have addressed the environmental impacts of their business and demonstrate good environmental management. This B-score also shows evidence of Expro managing our environmental impacts across our global operations.



"Everyone is now talking about a green recovery, and the CDP disclosure system has laid the foundations. We have helped companies and cities plan for a low carbon future, and we now need to deliver it."

Paul Dickinson
Executive Chair, CDP

What we do.

A balanced portfolio across the lifecycle



Well Construction

Innovative, high value, low risk well construction solutions provider with a focus on operational efficiency and well integrity.



Well Flow Management

Proficiently gathering valuable well and reservoir data, with the utmost regard for well-site safety and environmental impact.

Fast-track cost-effective, early field production, optimization and enhancement systems.



Subsea Well Access

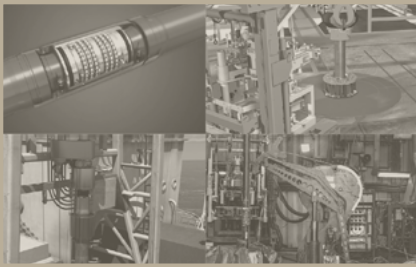
Ensuring safe, efficient and cost effective subsea well access systems across the entire lifecycle of the well.



Well Intervention and Integrity

Deployment, insight and enhancement solutions to enable reservoir and well surveillance, production optimization and asset integrity assurance.

A balanced portfolio across the lifecycle



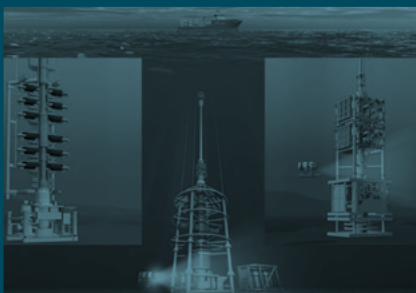
Well Construction

- Completion Technologies
- Casing Technologies
- Cementing Technologies
- Cure Technologies
- Downhole Service Tools
- ArticuLock®
- Drilling Technologies
- Conductor Driving & Slot Recovery
- Tubular Products & Services



Well Flow Management

- Well Testing
- Drill Stem Testing (DST) & Tubing Conveyed Perforating (TCP)
- Reservoir Fluid Sampling & Analysis
- Wireless Well Telemetry Solutions
- Multiphase Flow Metering
- Flow Surveillance
- Emission Reduction
- Midstream Pipeline solutions
- Early Production Facilities
- Facility O&M and Upgrades
- Production Enhancement & De-bottlenecking
- Geothermal Solutions
- CCUS Control & Monitoring



Subsea Well Access

- Subsea Test Tree Assembly (SSTTA)
- BOP Spacer / Spanner Joint Assembly (BOPSJ)
- Open Water Intervention Riser System (OWIRS)
- Light Well Intervention (LWI)
- Riserless Subsea Well Intervention System (RWIS)
- Hydraulic Intervention System (HIS)

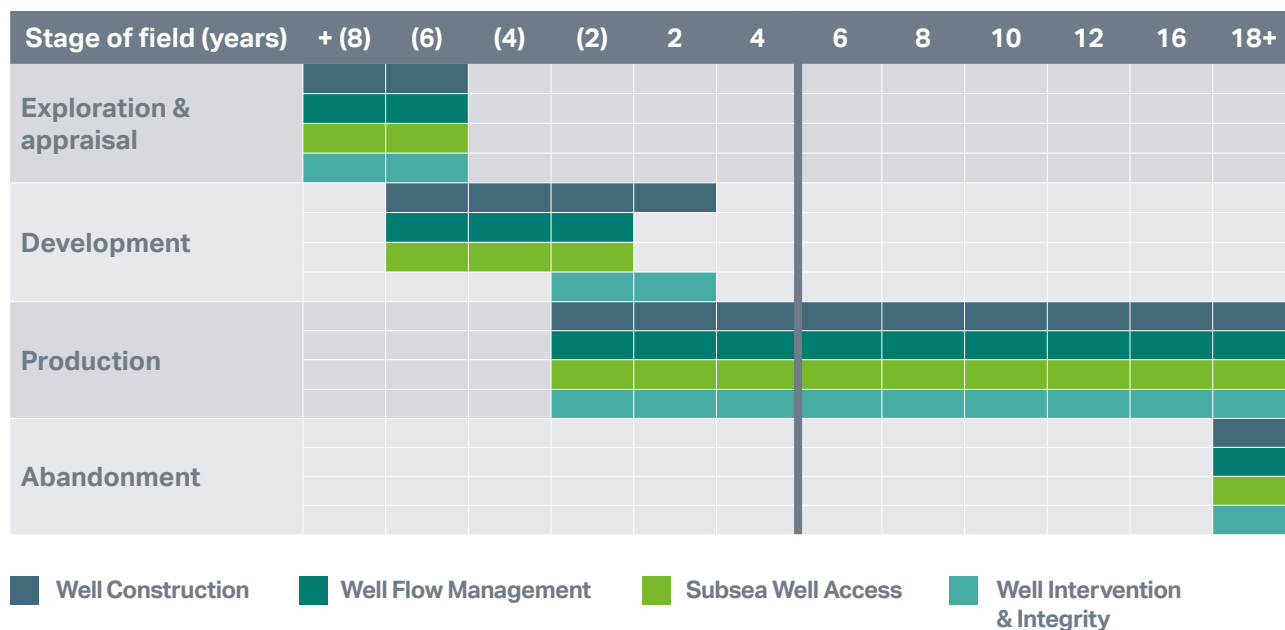


Well Intervention and Integrity

- Mechanical Slickline
- Cased Hole Services
- CoilHose™
- Octopoda™ Intelligent Intervention
- Petroleum Engineering Solutions
- SafeWells®
- Distributed Fiber Optic Sensing (DFOS)

Portfolio services across the lifecycle

Enhanced early visibility into the needs of customers and a broader scope of offerings across the entire well lifecycle



Portfolio services across the lifecycle

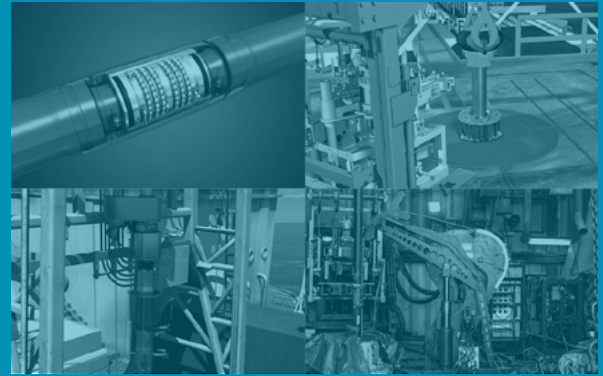
A portfolio that spans the reservoir and well lifecycle

		Reservoir & Well Lifecycle				
Product Line and associated services		Exploration & Appraisal	Development	Production	Asset life extension	De-commissioning
Well Construction	Casing Technologies	X	X		X	X
	Completions Technologies	X	X	X	X	
	Drilling Technologies	X	X		X	
	Conductor Driving & Slot Recovery	X	X		X	X
	Cementing Technologies	X	X		X	X
	Downhole Service Tools	X	X	X	X	X
	Tubular Products & Services		X			
Well Flow Management	Well Test	X	X	X		
	Drill Stem Testing (DST)	X			X	
	Tubing Conveyed Perforating (TCP)	X	X		X	X
	Fluid Sampling & Analysis	X	X	X	X	X
	Acumen Metering Solutions	X	X	X	X	
	Pipeline & Flarestack Services			X	X	X
	Early Production					
	Onshore Production Units			X	X	
	Enhancement Systems			X	X	
	Facility Upgrade			X	X	
	Operations and Maintenance			X	X	X
	Water Treatment	X	X	X	X	X
	Wireless Well Solutions	X	X	X	X	X
	Permanent Downhole Monitoring		X	X	X	
Subsea Well Access	SSTTA	X	X	X	X	X
	RWIS		X	X	X	X
	IRS		X	X	X	X
	LWI		X	X	X	X
Well Intervention & Integrity	Mechanical Slickline	X	X	X	X	X
	Cased Hole Applications	X	X	X	X	X
	Galea™					
	CoilHose™	X	X	X	X	X
	Octopoda™		X	X	X	X
	Safewells®	X	X	X	X	X
	Distributed Fiber Optic (DFOS) Slickline	X	X	X	X	X
	Petroleum Engineering Solutions	X	X	X	X	X

Well Construction

An industry leader in tubular running services, tubular fabrication, and speciality well construction services with a focus on complex and technically demanding wells.

The ability to understand and solve complex customer challenges with a portfolio of technology-focused well construction solutions.



Strategic advancements

Continuously transforming the construction of wells by combining over 85 years of experience with a culture of aggressively developing differentiating technology.

Further advancements planned via:

- Optimizing process efficiency on the rig floor with advanced digital solutions
- Improving well integrity with continued metallurgical research and development in the handling of corrosion resistant alloys (CRA) and constructing robust cement barriers with proprietary technologies and processes
- Mitigating risks of exposure with high capacity, gas rated threaded connections for large diameter tubulars

Strengths

- Industry pioneer in the handling of tubulars, supported by years of experience and in-house engineering and R&D capabilities.
- Market leader in intelligent and HP/HT completions.
- Game-changing cementing technologies that establish well barriers reliably while improving safety on the rig floor.
- Over 50 years of experience in conductor driving and associated services.
- Recognized leader in providing advanced fabrication services for fatigue sensitive tubulars and subsea components.
- Performance drilling technologies backed by experienced technical support
- Downhole Well Servicing Tools with best-in-class ratings and capacities for the most demanding wells.

Key stats

Industries top
5 heaviest
strings installed

2,435 Kip
Heaviest

Number of wells
constructed
per year

~4,000

Global Market
CAGR through
'28

7.8%

Well Flow Management

The industry leader in fully integrated well flow management solutions for over 50 years.

We measure and control reservoir fluids performance to provide insight and fast track solutions for production optimization, whilst reducing the impact to the environment.



Strategic advancements

We continue to play our part in becoming the solution to address a lower carbon future.

- Providing fast track and efficient production solution to address gas flaring and reduce methane emissions
- Advancing global power and heat generation from Geothermal resources
- Remote/automated Well Test & Production solutions
- Reducing service delivery Carbon footprint through smart deployment
- Auditable Emissions Measurement & Management
- Providing innovative monitoring and control solutions for efficient Carbon Capture and Storage operation

Key stats

Downhole wireless gauges installed

+300

Real-time data transmitted to customers' desk

+1 million hours

Gas Production managed by Expro facilities

>500 MMSCFD

Strengths

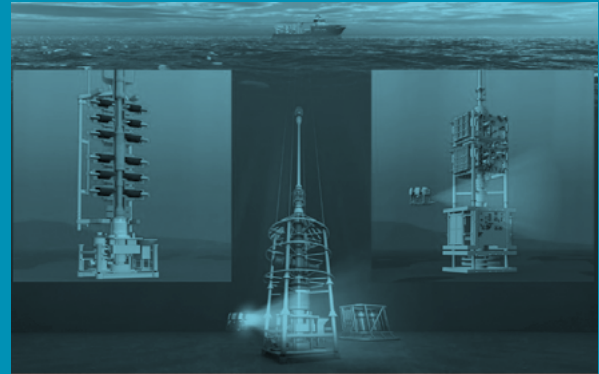
Fully integrated well clean-up, exploration and appraisal services including:

- Largest global fleet of innovative, reliable flow management equipment deployed across +50 countries
- Unique wireless telemetry technology, lowering cost of E&A through enhanced reservoir insight
- Leader in high rate gas testing and flow back and HT/HP systems – with industry unique ultra-high rate (+180Mscfd) Mega Flow separator
- Real-time data acquisition to Clients' desk during testing operation, lowering operators' service cost and unnecessary flaring through faster decision
- Fluid sampling and analysis for full reservoir fluid composition and highly reactive elements at the wellsite, including downhole non-reactive sampler
- Unique non-intrusive multiphase tolerant, flow surveillance technology providing insight within 1 hour without production interruption.
- Comprehensive non-radioactive metering portfolio covering the entire multiphase flow spectrum, including intrusive and non-intrusive solutions.
- Innovative solution to minimise the impact to the environment during pipeline integrity operations

Subsea Well Access

Market leading technology provider, ensuring safe well access and optimized production.

Providing the most reliable, efficient and cost effective well access systems, throughout the lifecycle of the well.



Strategic advancements

Full portfolio of subsea well access solutions derived from a foundation of 40 years of technology leadership in Subsea Test Tree Assemblies.

- Maintain leading position in subsea test tree systems due to advanced technologies and demonstrated reliability (single valve Shear and seal)
- Complete subsea well access portfolio ensuring safer and efficient subsea well intervention throughout the life cycle of the subsea wells
- Advanced Open water Subsea well access intervention systems for production enhancement and P&A challenges

Strengths

Leading provider of Subsea Test Tree Assemblies

- Barrier isolation, disconnect capability, and strip through & seal/ shear & seal technology to safely manage the containment of hydrocarbons
- Integrated approach to well access and integrity to ensure safe well access throughout the lifecycle of the well
- Subsea control & valves designed in-house and internal capability to carry out bespoke solutions to meet the relevant challenges faced throughout the life cycle of the well
- Intervention Riser System increases efficiency, removing the necessity to deploy marine riser and BOP
- Expro's Riserless Well Intervention System is a cost effective, rapid deployment and operation

Key stats

Expro market share in SSTTA systems

~57%

Largest large bore global SSTTA fleet

~75 strings

Subsea operations

3,000+

Well Intervention & Integrity

A leading global provider of well intervention services.

A safer and smarter well integrity and intervention solutions partner.



Strategic advancements

Continue to expand technology to provide critical well data and services that assure well integrity and optimize production

Market leadership will be sustained by:

- Leveraging our global operating footprint and relationships to deliver cost-effective, innovative solutions and reduce carbon emissions
- Continued development of technologies and services required for the energy transition
- Extension of intervention services including autonomous slickline
- Holistic well integrity management services; assurance, remediation, monitoring and reporting
- Intelligent software solutions which predict critical well parameters

Strengths

World's largest independent wireline service supplier

- Offering leading-edge technologies and solutions that optimize performance from existing well stock and advance operators energy transition roadmaps
- Well Integrity management and software solutions
- Octopoda™ provides a unique annulus intervention capability to assure well integrity and enhance production
- CoilHose™ provides a lower cost, more efficient alternative to coiled tubing
- Real time data capture and interpretation performed at the well site

Key stats

Well Intervention
heritage

75 years

Asset fleet
packages

~250

Runs per month

6,000

Our new technology

Discover what's possible

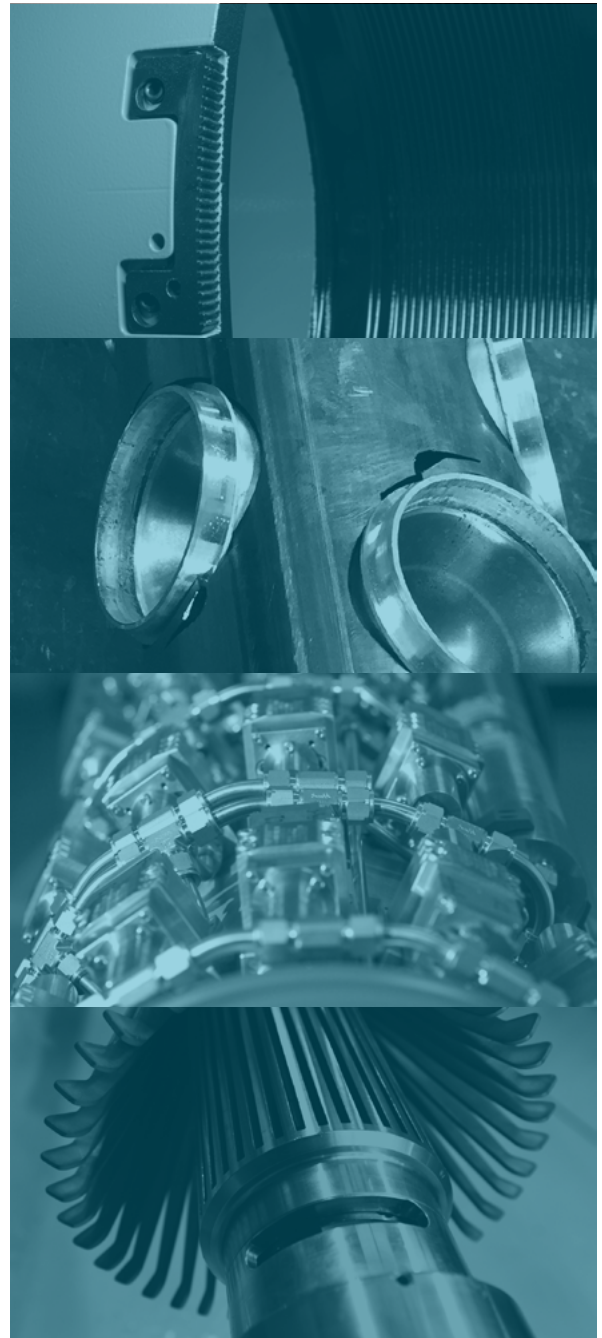
Inspire | Create | Differentiate

Innovation is important to us.

Our determined commitment to product portfolio enhancement, increasing sophistication in technology and the application of resources and IP development will ensure that Expro goes beyond merely meeting customer needs, but addressing our impact on the future. We want to be more relevant in today's world.

We're open. We are a business that thinks ahead. We're bold. And we're direct. It's a way of working that helps you address your critical energy challenges of today.

Changing for the better.



Innovative, future-facing technology

Innovate with purpose

What we are doing

- **Digital transformation:** Evolving our digital initiative to unleash the power of data within our business practices to create a unique customer experience
- **Partnership:** We continue to build and sustain high value partnerships to support the unique customer experience we create
- **Planet:** We are advancing and developing technologies to help create a lower carbon future and participate in maximizing recovery
- **Intelligent automation:** We are looking at ways to increase accuracy and uptime, improving safety, reducing costs and personnel on board



We are a visionary market influencer, capable of designing and deploying novel solutions that win the day by leveraging innovative, future-facing technology.

Our solutions continuously challenge established methods of conducting operations in fresh and bold ways."



CoilHose™ Light Well Circulation System

Providing a low cost and efficient alternative to traditional coiled tubing operations



Delivering a safe, versatile and OPEX effective service with a low operational resource requirement

- Field proven technology with more than 100 runs
- Minimizes the loss of hydrocarbon production
- Reduces overall cost of intervention
- Light, compact and efficient footprint
- Mobile and flexible set-up
- Lower number of personnel required (3-4 multi-skilled crew)
- Can be rapidly deployed universally (3-4 hours) on lightweight topsides with limited deck space



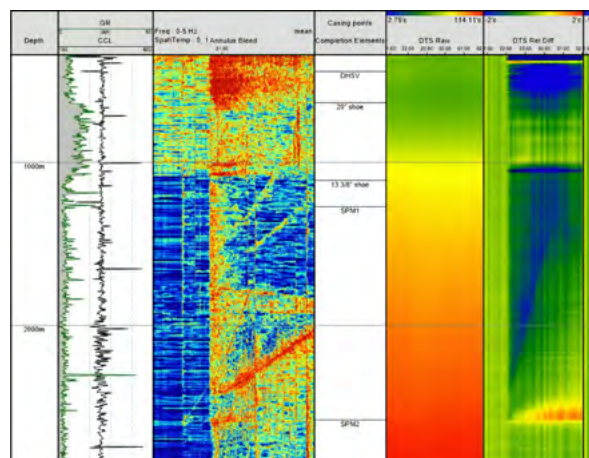
Distributed Fiber Optic Sensing (DFOS) Slickline

From deployment to evaluation to remediation, Distributed Fiber Optic Sensing Slickline gives you enhanced insight into your well



Using thru-tubing fiber optic deployment to enable operators to optimize their well stock in real time

- Distributed Fiber Optic Sensing (DFOS) Slickline allows well performance to be assessed over its entire length during a Slickline intervention
- Easy to deploy
- Enables distributed temperature and acoustic sensing
- Monitors dynamic behaviour
- Fast processing of data on-site enables remediation to take place during the same rig up or intervention campaign
- Other logging tools can be deployed on the bottom of the DFOS Slickline to maximize the intervention opportunity



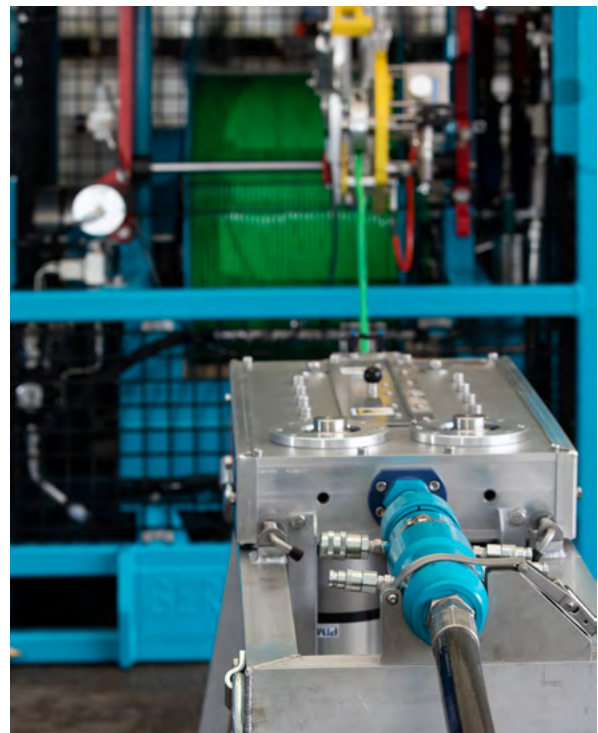
Annulus Intervention System – Octopoda™

Octopoda™ - Annulus Intervention system enables intervention, circulation, injection of sealant and diagnostics in a pressurized annuli



Safe, OPEX and ABEX efficient remediation of annulus integrity issues

- Innovative and unique system to access well annuli
- Enables inspection and repair of annulus integrity issues
- Rapid mobilization
- Modifications for different wells
- Increased oil recovery through revitalization of shut in wells
- Environmental and groundwater protection
- Efficient footprint and personnel requirements
- Reduces the requirement for a workover rig or heavy equipment



Galea™ Autonomous Well Intervention System

Ensuring production continues and is optimized for the well conditions



A fully automated, efficient and cost effective solution to keep your well producing while reducing the environmental impact of your operations

- Reduction in deferred production
- Reduction in operational overheads
- Wax scraping intervals defined by well conditions rather than availability of wireline crew and equipment
- Reduced HSE exposure for personnel due to reduced time spent at well site
- Reduced environmental impact to field and surrounding areas
- Allows production to continue in remote locations or areas that are inaccessible to wireline crews at certain times of the year
- Potential for 24/7 monitoring from anywhere in the world
- Elimination of accidental wire breaks



Open Water Intervention System

Lower Riser / Emergency Disconnect package design has extensive track record of over 900 deployments



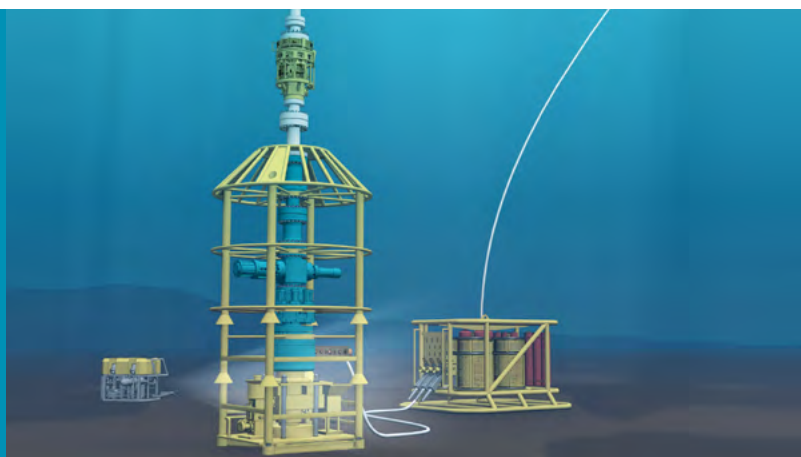
Compact and lightweight system (approx. 50 Tonnes)

- Deployed from client rig or specially adapted vessel
- Provides well control and disconnect across the life cycle of subsea well
- Ability to deploy full range of intervention services
- Allows the deployment of Coil Tubing with ability to shear & seal up to 2-7/8" coiled tubing and wireline / slickline with gate & seats
- Rated to 10,000psi, 7-3/8" Production Bore & 2-1/16" Annulus Bore and up to 3,000m water depth
- Design Temperature Range 0°F to 250°F
- H2S NACE MR 0175 + CO2 service class
- IWOCS supplied with XT control capability, negating the requirement for additional 3rd parties
- Controls through direct hydraulic and electrohydraulic systems
- Interface with horizontal and vertical trees



Riserless Subsea Well Intervention System

More than 70% of all life of well intervention requirements can be performed with a RWI system



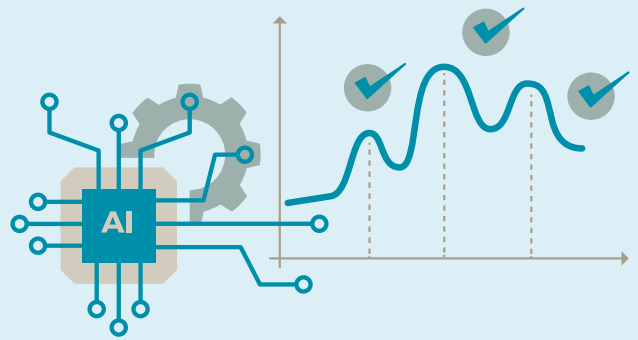
Compact and lightweight system (approx. 45 Tonnes)

- Deployed from an Expro managed mono-hull vessel, either through a moonpool with smart tower system or "over the side" with AHC wireline mast or from a modified client vessel
- Provides means of well control and disconnect
- Rated to 10,000psi, 7-3/8" Production Bore and up to 3,000m water depth
- Design Temperature Range 0°F to 250°F
- H2S NACE MR 0175 + CO2 service class
- System utilizes Expro's ball valve technology with ability to shear & seal on intervention media
- Ability to deploy slickline, E-Line and Coilhose through water
- Allows for the intervention tool strings up to 22m long
- IWOCs through direct hydraulic and electrohydraulic systems
- Interface with horizontal and vertical trees



iCAM[®] Connection Analyzed Make-up System

The iCAM[®] system's artificial intelligence engine and machine learning capabilities provide automated evaluation of connection make-up data



- Automated evaluation and prediction of CAM data using machine learning and big data analytics
- More accurate and consistent, data-driven decisions and recommendations to increase connection integrity
- Reduces POB and workload
- Can be monitored remotely through Frank's DISPLAY™ technology in real-time, globally
- Reduces connection lay-downs and reworks
- Designed with operations in mind to increase reliability and maintain, or improve, current RIH efficiency
- Phased approach with increasing capability at each deployment



2019 Bronze Award



2019 New
Technology
Showcase Winner

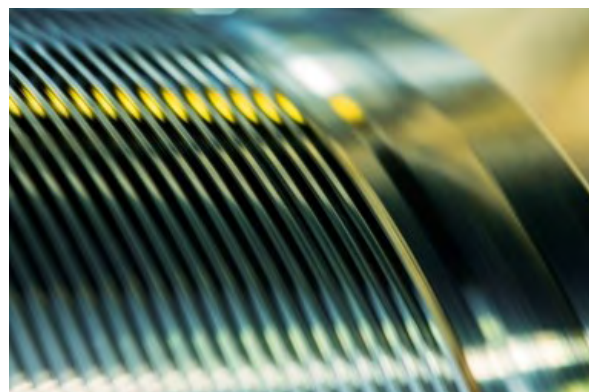
XT4™ GT Connection

Our XT4™ GT premium weld-on connector delivers reliable seal performance in the most complex deep-water and ultra-deep-water applications



**Extreme Tension
Extreme Compression
Extreme Bending
Extreme Temperature**

- The 22" XT4™ GT is a certified gas-tight connector in accordance with the latest API RP 5C5:2017 CAL I standards
- The connection was tested on 22" x 1.50" X80 pipe while also tested to the severity of API RP 5C5:2017 CAL III standards in which the connection was subjected to elevated temperature testing at 275°F prior to achieving 95% in both Test Series A and B
- The 22" XT4™ GT is a deep-stab connector that features an internal metal-to-metal seal, external environmental O-ring seal with a back-up PTFE ring seal, tapered thread profile, tapered thread cone, and contoured noses and shoulders
- Consistent 3.5 turn makeup
- High Makeup Torque resists backout (Min. 72,000 Opt. 76,000 Max. 80,000 ft-lb)



- With a strong background in Tubular Running Services, the XT4™ connection was designed to be installation friendly and is compatible with a complete range of handling equipment
- The XT4™ connection can be made available with a completely hands-free Spring ARK Anti-Rotation Key

BRUTE[®] Packer System

**Providing a solution
to multiple well
suspension and well
testing challenges**



Utilizing BRUTE[®] High Pressure-High Tensile Packer, along with the field proven BRUTE[®] Storm Valves and BRUTE[®] Circulation Valves, to provide a solution to multiple well suspension and well testing challenges.

- API 11D1 & ISO 14310 V3 / 19AC V3 Annex A/D validated for reliable quality and performance control
- Modular design increases range of application and operational efficiencies while reducing rig site inventory
- Best in class packer ratings with combined loading capability up to 1MM lbs. and 10,000 psi pressure differential
- Simple, non rotating designs allows for faster valve operation to significantly increase operational efficiencies and rig time savings
- Newly released 22" BRUTE[®] System available for deployment.



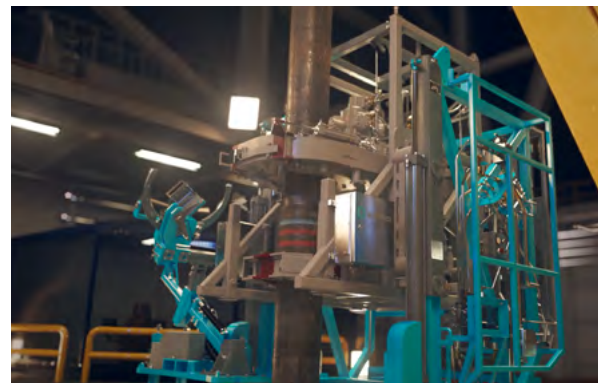
iTONG™ Intelligent Well Construction Solution

Enabling automated connection make-up at the push of a single button



The industry's only truly single push button tubular make-up solution, allowing the operator to control, execute, verify, and validate every connection make-up to optimize connection integrity.

- Designed for the latest technological adaptation in the digitalized rigs during Well Construction phase.
- Customized to any rig configuration.
- The programmable logic controller (PLC) platform validates all safety measures for flawless execution for maximizing operational efficiency.
- The iTONG™ solution is coupled with Expro's iCAM® tubular connection makeup system, which applies machine learning and artificial intelligence to autonomously verify tubular connection make-up safely and reliably at every connection joint in the tubular running process.



- Successfully deployed in 2021 for more than five months in offshore North Sea with full customer satisfaction and positive technology recognition.
- 50% reduction in POB
- 40% reduced connection makeup time
- 146 tons of CO2 e reduction
- Revolutionizes the tubular running process providing the fully autonomous solution with the purpose of achieving operational excellence through a Digital Solution

ArticuLock®

**Simple and robust
tool capable of
opening up weather
windows for installing
subsea equipment**



Eliminating stress and fatigue

Expro's Articulock® technology provides open-water, riser, casing or landing string articulation even in extreme conditions to:

- Extend the weather window for deployment of subsea trees, flow-bases, emergency disconnect packages (EDP) lower riser package (LRP) or casing strings etc by > 400%
- Eliminate low cycle fatigue (remove stiffness) associated with hang-off or suspending loads during riserless or open-water operations
- Provides a contingency to allow subsea deployment for subsea operations to continue even in high significant wave height, sea-swell or loop current conditions
- Reduce Waiting On Weather (WOW) time



Cure Technologies

With advanced downhole technologies, Expro's mission is simple: to save rig time through ultimate cement placement



SeaCure®

SeaCure® is a revolutionary subsea cementing system, which delivers stabbed-in, inner string cementing for subsea wells, eliminating the need for shoe tracks and improving cement placement, drill out performance and removing the need for remedial cementing, allowing operators to achieve Ultimate Cement Placement.



QuikCure®

By introducing a controlled – temperature heat sweep into their inner string by Casing ID (inner) annulus through the SeaCure® cementing assembly, the QuikCure® process can increase compressive strength build-up in the annular placed slurry by up to 500% and reduce WOC by up to 70%.



FloatCure®

FloatCure® provides major key benefits while extending your reach through reducing the system net effective weight. However, unlike conventional buoyancy assist floatation equipment, FloatCure® maintains buoyancy an pump-through capability for the casing/liner system throughout the entire running and cementing operations.



Wireless Gauge Technology

Our portfolio of downhole wireless technology provides monitoring solutions across the entire life cycle of a well



Enabling real time downhole monitoring and in-well communication through intelligent well networks.

Expro has extensive expertise in the acquisition of downhole data and its transmission to surface using wireless telemetry. This data enables our customers to meet their monitoring objectives and reduce uncertainty.

Applications:

- Advanced Reservoir Testing – E&A and Field Development
- Drill Stem Testing
- Retrofit production well surveillance
- Gas storage well monitoring
- Wellbore barrier verification
- Annular barrier monitoring

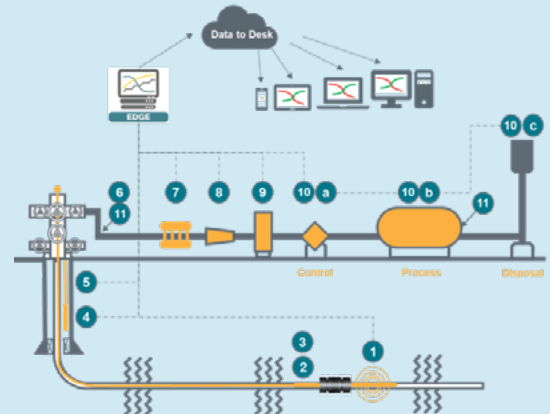
Features and Benefits:

- Transmits downhole pressure and temperature data to surface in real-time
- Electromagnetic (EM), acoustic and hybrid telemetries available
- Limitless transmission range using repeater stations
- Deployment using conventional well intervention operations
- 7+ years monitoring achievable



Complete Data Solution

Expro's EDGE data acquisition package includes Data to Desk and is an integral part of Well Flow Management



Providing a complete data solution to capture, report and present accurate and meaningful data in real-time for analysis and decision making

The combination of EDGE and Data to Desk provides a total real-time data solution, taking full advantage of extensive multi-tasking capabilities in transmitting real-time surface well test data acquired from multiple sensors, enabling Expro and Client to interact live via any web enabled device improving operation efficiency.

EDGE features and benefits

- Expandable real-time data monitoring and processing
- Graphical user interface for live data and trending
- Alarm management system with visual, audible and e-mail alarm monitoring
- Industry standard communications and integration
- Data export and reporting
- Real-time data transmission

Data to Desk features and benefits

- Real-time data, trending and chat/messaging
- Cloud based service, available on any web enabled device
- Access through dedicated secure web site
- Multiple users accessing data at the same time



Fluid Sampling and Analysis

Successful development of hydrocarbon reservoirs requires representative sampling and accurate analysis



Offering a fully integrated package of hydrocarbon reservoir and process fluid flow measurement, sampling and analysis services for over 50 years, in all continents.

We offer:

- Sampling of reservoir and process fluids from E&A to production stage
- Analysis of fluids to determine chemical and physical properties used to maximise the life of reservoirs and optimise its production as well as the design of the required production facilities
- Specialist nonreactive sampling tools for accurate measurement of traces element such as Mercury, Arsine and a number of Sulphur components to ensure highly corrosive components are correctly assessed.
- EOR studies using natural gas or with CO₂
- Comprehensive water analysis for scaling and corrosion prediction

A complete understanding of fluid properties is key to the accurate evaluation of:

- Reservoir performance and reserves
- Flow assurance and well performance
- Type and value of the product
- Process requirements
- Development risk

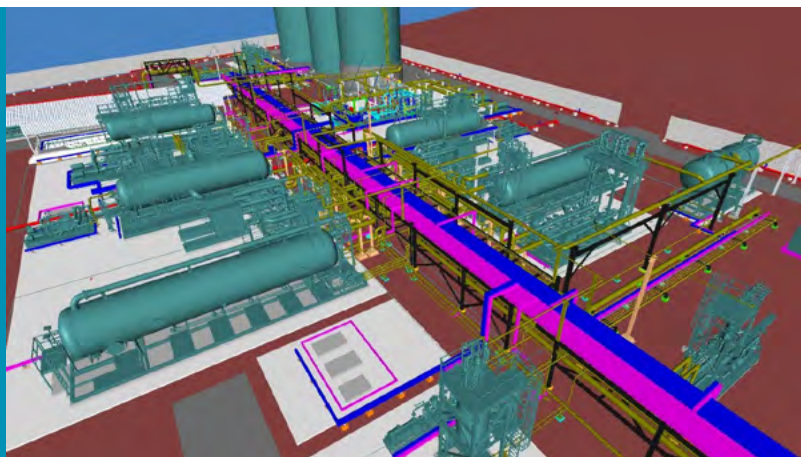


Our Fluid Sampling And Analysis business is focused on:

- High cost/high data risk wells offshore and onshore
- Reservoirs containing complex fluids – gas/ condensate, high mercury/sulphur
- Well site analysis where sample cannot be sent to standard laboratory

Production Solutions

Fast track solutions to deliver early cash to its customer, enhancing existing facilities to increase hydrocarbon with reduced impact



We provide integrated engineered solutions and project managed the complete scope, covering, design, procurement, installation, commissioning and operation & maintenance.

Our team design, procure, install and commission; and then operate and maintain ensuring safe and efficient operation.

We partner with the most suitable technology providers to ensure the solution is delivered quickly to location and to international specifications.

Our solutions are modular and flexible to allow fast installation and upgrade of the installation to address changes within the production profile.

We cover the entire scope including:

- Site preparation
- Civil work through engagement with local and international vendors
- Design, procurement of the equipment
- Installation and commissioning
- Documentations for training and operation of the facility
- Operate and maintain the facility with our global presence and training of local resources prior to commissioning

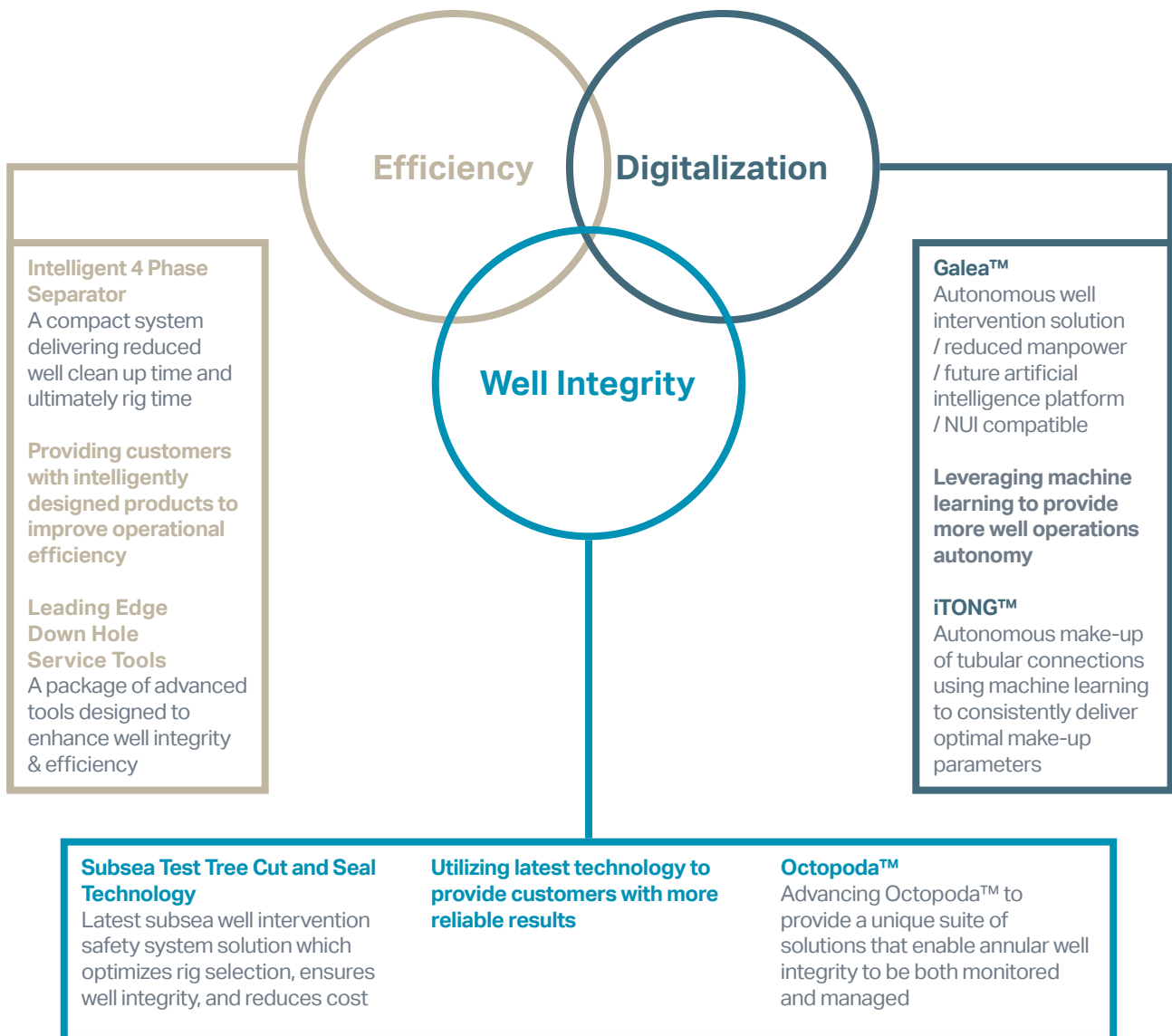


Our future technologies

**Harness the power of data to
create a lower carbon future**

Future-facing Technologies

Innovative Solutions Focused On Automation,
Digitalization And Energy Transition



Our achievements

Nearing 80 years of success

Safety and service



2017	NOIA Awards	Safety in Seas (SIS) Safety Practice Award - JET STRING ELEVATOR™
2017	OH&S Awards	SKYHOOK™ Wireless Cementing Line Make-Up Device
2019	World Oil Awards	Best Health, Safety, Environment / Sustainable Development - JET STRING ELEVATOR™
2020	Hart's E&P	Engineering Innovation (HSE category) - Rack Back Console
2020	World Oil Awards	Best Health, Safety, Environment / Sustainable Development - SKYHOOK™
2020	RoSPA	Scotland Trophy Award
2021	Hart's E&P (HSE)	VIGILANCE™
2022	World Oil	Best Health, Safety, Environment / Sustainable Development - CENTRI-FI™

Technology and innovation



2015	Offshore Achievement Awards	Innovator Award - Wireless Well Solutions
2017	Woelfel BMEA Awards	Mega Spider / Elevator
2018	OTC - Spotlight on New Technology®	Next Generation Landing String (NGLS)
2019	Hart's E&P Awards	Collar Load Support (CLS™) System
2022	OTC - Spotlight on New Technology®	Galea™ Autonomous Well Intervention System
2022	OWI Awards	Most Innovative Solution - Octopoda™ Annulus Intervention Services
2023	Northern Star Business Awards	Inspiration from Innovation Award - DeltaTek

Other awards



2021	Great Place to Work®	Colombia Certification
2022	OWI Awards	Champion Integrated Well Service Company
2023	OAA Awards - Young Professional	Tristram Horn (DeltaTek)
2023	King's Award for Enterprise	DeltaTek Global
2023	OWI Awards	Intervention Champion of the Year
2023	OWI Awards	Energy Transition Pioneer of the Year

Our regions

Asia Pacific (APAC)



Mrinal Vohra
Vice President

"Safety and quality is at the heart of everything we do. We listen to our customers and deliver bespoke solutions."

Customer satisfaction rating

95%

Positive Intervention cards filled out

24,421

Excellence in Operations (EIO) Score

96%

What makes us different?

- We continuously strive to bring new solutions and technology such as Distributed Fiber Optics, CoilHose™ and Octopoda™ to our clients, thereby expanding our service offerings.
- Within Expro our region performs the highest amount of DST & TCP jobs.
- Not only do we provide services in Oil & Gas but also in geothermal renewable energy.
- We are praised by our clients throughout the region for regularly delivering impeccable service quality.
- We tailor solutions for our clients to ensure their objectives and expectations are surpassed.
- Well construction, P&A and Riserless subsea well intervention are our key growth segments.
- We recognize that developing our people is fundamental for delivery of our client's objectives; we invest in our people across the value chain in technical and management training.
- We are our client's first choice for services such as deep water subsea landing strings and high flow gas testing solutions. Our delivery and track record speaks for itself.
- We partner with our clients in addressing their problems, in doing so we have gained their respect and become trusted partners.



1,461 Employees
15 Countries

Operational Areas

Australia, Bangladesh, Brunei, China, India, Indonesia, Japan, Malaysia, Myanmar, New Zealand, Papua New Guinea, Philippines, Singapore, Thailand, Vietnam

Clients include

Shell, Inpex, Exxon, Chevron, BSP, ENI, Woodside, Pertamina, ONGC, Total, Petronas, PTTEP, CNOOC, Hess, HOEC, Beach, Mubadala, Santos, Medco, Vedanta, Hibiscus, Japex, CNOOC, COSL and Husky

Europe & Sub Saharan Africa (ESSA)



Iain Farley
Vice President

"Our vision is to be the chosen partner of our customers through a reputation of excellence in service delivery and the use of innovative, disruptive technologies"

Customer satisfaction rating

94.1%

ESSA - Well Construction 2022

996 jobs
Over 5 million feet of casing & tubing run

What makes us different?

- Our business is our people who love to work for Expro, creating us a very loyal employee base
- We turn up differently. We put our customers first, placing a focus on meeting their individual requirements and delivering a quality service
- We believe our safety performance to be at the heart of our success
- We have a genuine willingness to collaborate with customers, partners and suppliers to create the right environment for joint success
- We offer tailored solutions to meet our customers challenges and needs, whether these be individual products or bundled services
- To remain a market-leader we take every opportunity to drive continual improvement throughout our operations
- We offer a comprehensive portfolio of products and services across well construction, intervention, subsea and production segments
- We are well established in a broad range of countries with an extensive track record
- We are disruptive, delivering customer outcomes through new technologies and innovation
- We take sustainability seriously, using our capabilities to reduce our industry's effects on the planet



2,233 Employees
31 Countries

Operational Areas

Angola, Azerbaijan, Cameroon, Congo, Cyprus, Denmark, Equatorial Guinea, Ethiopia, France, Gabon, Germany, Ghana, Israel, Italy, Ivory Coast, Kazakhstan, Kenya, Mauritania, Mozambique, Namibia, Netherlands, Nigeria, Norway, Romania, Senegal, South Africa, Tanzania, Turkey, Turkmenistan, Uganda and UK

Clients include

Apache, Asalla, Baker, BP, Chevron, CNOOC, ConocoPhillips, ENI, Equinor, ExxonMobil, Harbour Energy, Ithaca, INEOS, Maersk, Neptune, OMV, Perenco, Repsol Sinopec, SASOL, Schlumberger, Shell, Total, Trident Energy, Tullow, Wintershall, Woodside

Middle East and North Africa (MENA)



Hussein Elsisi
Vice President

"Safety, service quality and motivated workforce have always been the core foundation of our performance. Meeting and exceeding out stakeholders' expectations are embedded in our DNA."

Oil and gas production

85+ kbopd
430+ mmscfd
105+ mmscfd
avoidance

Customer satisfaction rating

96.9%

Safety performance

Days since LTI: 1,221
Hrs since LTI : 11.46 M
PI Cards Q3-22 : 15,000

What makes us different?

- Our safety performance stands out, and our commitment to safety is paramount.
- We embrace partnership with customers through our focus on their challenges and we support them by developing bespoke solutions. We have an appetite to look outside the box for non-core or not in-house services and successfully deliver them. Algeria PS is a sound example.
- We manage high volume low profit business successfully. It is a fine line between making profit and loss.
- We are the pioneer region for Sonar Meters, MPFM, BB and Production Optimisation; offering an array of different unique applications to our customers in production domain
- Our clients trust us. Our WI activity in Qatar stands out as we manage high pressure flow rates gas wells.
- Expro MENA has been successful in creating collaborative business with several partners, including some of our major competitors, capitalizing on our technical knowhow and our local market knowledge
- Our people differentiate us; they passionately deliver our services meeting clients' job objectives with minimal disruption to their activities. This was evident during COVID era, overstay and committed teams
- We are the international local provider



**2,026 Employees
11 Countries**

Operational Areas

Algeria, Egypt, Iraq, Kuwait,
Libya, Morocco, Oman, Qatar,
Saudi Arabia, Tunisia, United Arab
Emirates

Clients include

Sonatrach, Saudi Aramco, ADNOC,
Total, NOC, BP, Apache, Oxy, Eni,
Shell, Qarun, Khaldia, Bapetco,
Agiba, Qatar gas, ARA, SNOC, DP
and MOG

North and Latin America (NLA)



Toby Pitre
Vice President

"We strive to be at the forefront in Quality, Safety, Technology and Teamwork. Our delivery of these qualities drives success to our customers and delivers the results they expect."

Customer satisfaction rating

96%

RVI free

2 years

Excellence in Operations (EIO) score

97%

What makes us different?

- Our culture is passionate about safely delivering excellent quality customer service.
- We listen to our customers and build relationships to understand their needs & exceed their expectations.
- Establishing our position as a leading Full Cycle Energy Service provider, serving our clients with our People, Processes and Technology in the most sustainable, efficient and effective way possible.
- Being active in our communities and ensuring our reputation as a socially responsible employer is upheld at all times.
- We are forthright in all of our business interactions and conduct our business with the highest ethical standards



2,308 Employees
12 Countries

Operational Areas

Argentina, Bolivia, Brazil, Canada, Colombia, Ecuador, Guyana, Mexico, Suriname, Trinidad, USA, Venezuela

Clients include

Chevron, Conoco, Equinor, Oxy, Shell, BP, Exxon, Kinder Morgan, Enterprise, Energy Transfer, YPF, Petrobras, Perenco, Ecopetrol, Pemex, ENI, Repsol, Halliburton, Baker Hughes and SLB

We are Expro

Where there is a well, there is an Expro way.



Working for our clients across the entire well life cycle, Expro is a visionary full-cycle energy services expert offering novel, insightful solutions, dependable competency and award-winning safety.

Combining innovative, future-facing technology with high-quality data, we have a reputation for extraordinary performance that keeps your operations running smoothly.

Partner with us to help address the critical energy challenges of today and engineer the answers of tomorrow.



EXPRO[®]