



EXPRO[®]

Corporate overview

2023

NYSE: XPRO | expro.com

FULL-CYCLE ENERGY SERVICES PROVIDER



Working for our clients across the entire well life cycle, Expro is a visionary full-cycle energy services expert offering novel, insightful solutions, dependable competency and award-winning safety.

Combining innovative, future-facing technology with high-quality data across well construction, well flow management and production, subsea well access, and well integrity and intervention, we have a reputation for extraordinary performance that keeps your operations running smoothly.

We're right-sized, right now to deliver world-class services. Being nimble means we're not locked into unyielding ways of working, we're more responsive to your changing needs and always ready to help.

We're mindful of our impact on the planet, as well as the health and well-being of our workforce.

Partner with us to help address the critical energy challenges of today and engineer the answers of tomorrow.

OUR VISION



Recognized for extraordinary performance, championing safety and long-standing partnerships, Expro is focused on unleashing the power of data and digital transformation as key drivers that enable our customers to make more timely and informed decisions.

Our license to work is founded upon a solid reputation for competency and dependability, an innovative and unified worldwide team whose skills are constantly evolving with the industry, deep insight into the needs and preferences of our customers and unrelenting commitment to customer service quality.

We are a visionary market influencer, capable of designing and deploying novel solutions that win the day by leveraging innovative, future-facing technology. Our solutions continuously challenge established methods of conducting operations in fresh and bold ways.

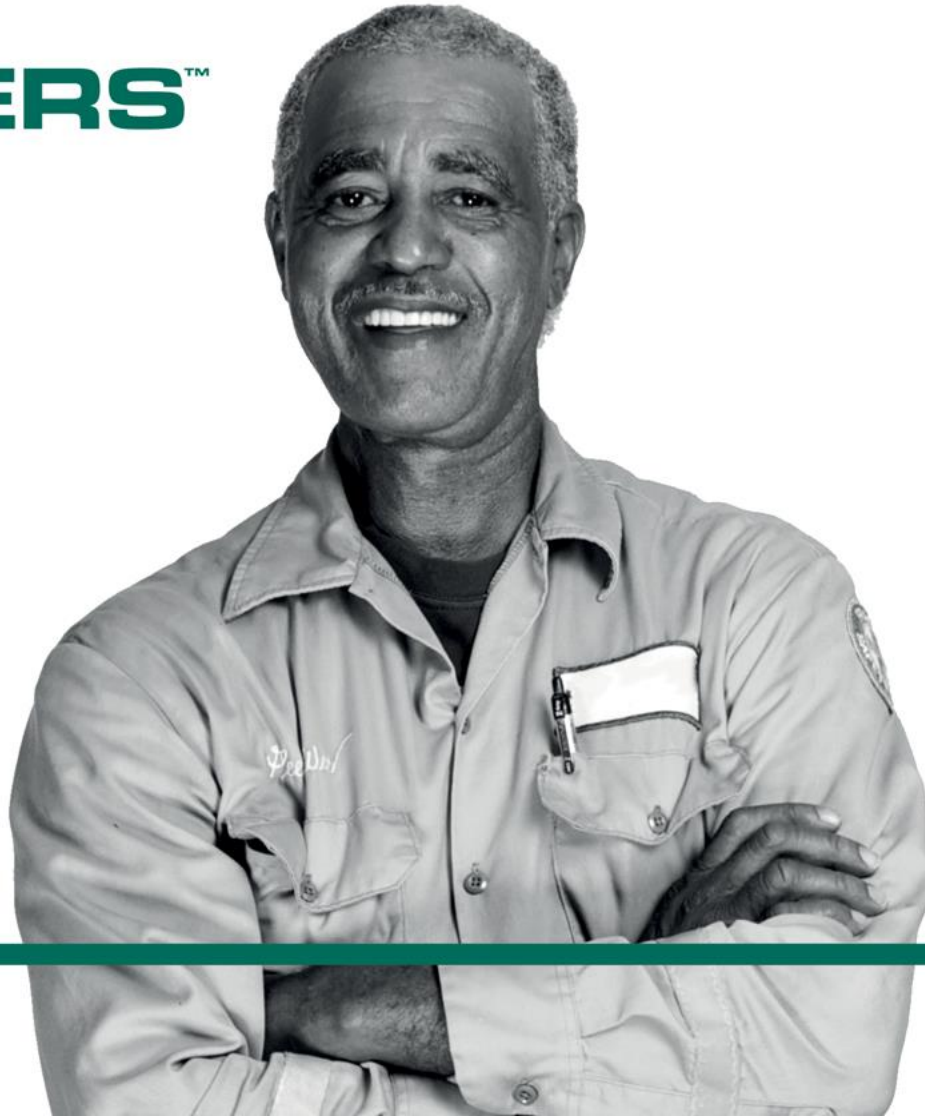
With a well-equipped, well-motivated workforce, we're right-sized, right now to deliver a uniquely satisfying customer experience. We are flexible and responsive whilst providing a strong,

balanced services portfolio to deliver world-class service and technology as a go-to partner in our selected markets. We win business because we are the best, not because we are the biggest.

Expro will always put the right people forward to do the right work for the right customers in the right places. But we have a duty to go far beyond this. We are a citizen of the world – addressing our own, and the industry's effects on the planet to ensure a positive, sustainable impact. We "walk the talk" by joining industry leaders in committing to a more sustainable and lower-carbon future, working to achieve net zero CO_{2e} emissions by 2050 and 50% reduction in carbon intensity by 2030. Honesty, transparency and accountability lie at the core of this citizenship.

This vision is what will make us visible, distinctive and highly relevant in the industry, creating value for our customers, employees and investors alike. It's an approach that will attract new customers and enhance existing business in the years ahead. And it will ensure we can attract, retain and nurture a talented and diverse workforce to turn our growth ambitions into reality.

FUTURE ENGINEERS™



People are the most important.
And every Expro person
engineers our future.

We are the drivers of
our methodologies.
We are confident.

We can draw out the right
answers which attract
the right customers.

Company highlights

More than 80
years of
market
leadership

- **Leading full-cycle energy services expert** with an outstanding reputation for future facing technology driven-solutions, service quality and HSE
- **Broad portfolio of products and services** across the full well lifecycle providing scale, breadth and stability
- **Future-facing technologies** that allows company to participate in **energy transition** as we advance our journey to net zero achieving a 50% reduction in CO₂e by 2030 and net zero by 2050
- **Global operating footprint** with scale / scalable presence in key markets
- **Attractive growth opportunities**, focused on leveraging relationships with NOC / IOC customers and life-of-field capabilities
- **Strong financial profile** that reduces risk and increases strategic flexibility



High calibre management team guided by our core values



Mike Jardon
Chief Executive Officer



Alistair Geddes
Chief Operating Officer



Quinn Fanning
Chief Financial Officer



Natalie Questell
Senior Vice President,
Human Resources



John McAlister
General Counsel



Steve Russell
Chief Technology Officer



People

At the heart of our success. We recognize the value of our people and are committed to providing the working environment, encouragement and personal development to achieve our goals.

Performance

Getting it right first time, every time. We are passionate about safely delivering excellent quality customer service. We embrace teamwork, individually and collectively assuming responsibility for delivering the highest value to all our stakeholders.

Planet

We are committed to reducing our own environmental impact. We will play a relevant role in the energy transition towards a lower carbon future. We are also determined to make a positive impact wherever we operate.

Partnerships

We listen to our customers and build relationships to understand their needs. We innovate with purpose to apply, adapt or develop our technologies and services to provide timely and effective solutions.

Senior management team



Dave Bowman
Vice President,
Business Development

Hannah Rumbles
Global Marketing and
Communications Manager

Stuart Paterson
Director, QHSE &
Competency Assurance

Cory Cole
Director,
Asset Management

Toby Pitre
Vice President, North &
Latin America (NLA)

Iain Farley
Vice President, Europe &
Sub Sahara Africa (ESSA)

Hussein Elsisi
Vice President, Middle
East & North Africa
(MENA)

Mrinal Vohra
Vice President, Asia
Pacific (APAC)



Michael Bentham
Vice President,
Finance, Principal
Accounting Officer

Tulio Scacciati
Vice President,
Corporate Development

Scott Turner
Chief Information Officer

Domenico Sansalone
Group Treasurer

Dmitry Nekrasov
Group Tax Director

Heather Manning
Group Internal Audit
Director, SOX Integration
Lead



Daniel More
Vice President,
Engineering

Paul Sehgal
Director, Supply Chain

Scott Brown
Director, Intellectual
Property

Jeremy Angelle
Vice President,
Well Construction

Max Tseplic
Vice President, Well
Intervention and Integrity

Graham Cheyne
Vice President,
Subsea Well Access

Jean Moritz
Vice President, Well Flow
Management & Production

Ingrid Huldal
Director, Portfolio
Advancement



Siang Chin (S-C) Chua
Managing Region
Counsel, APAC /
Production

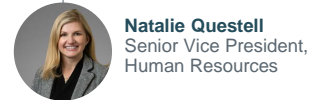
Sandeep Chokshy
Managing Region
Counsel, ESSA / MENA

Sarah Eley
Deputy Company
Secretary

Joerg Gruber
Chief Compliance Officer

Josh Hancock
Senior Counsel, Assistant
Corporate Secretary

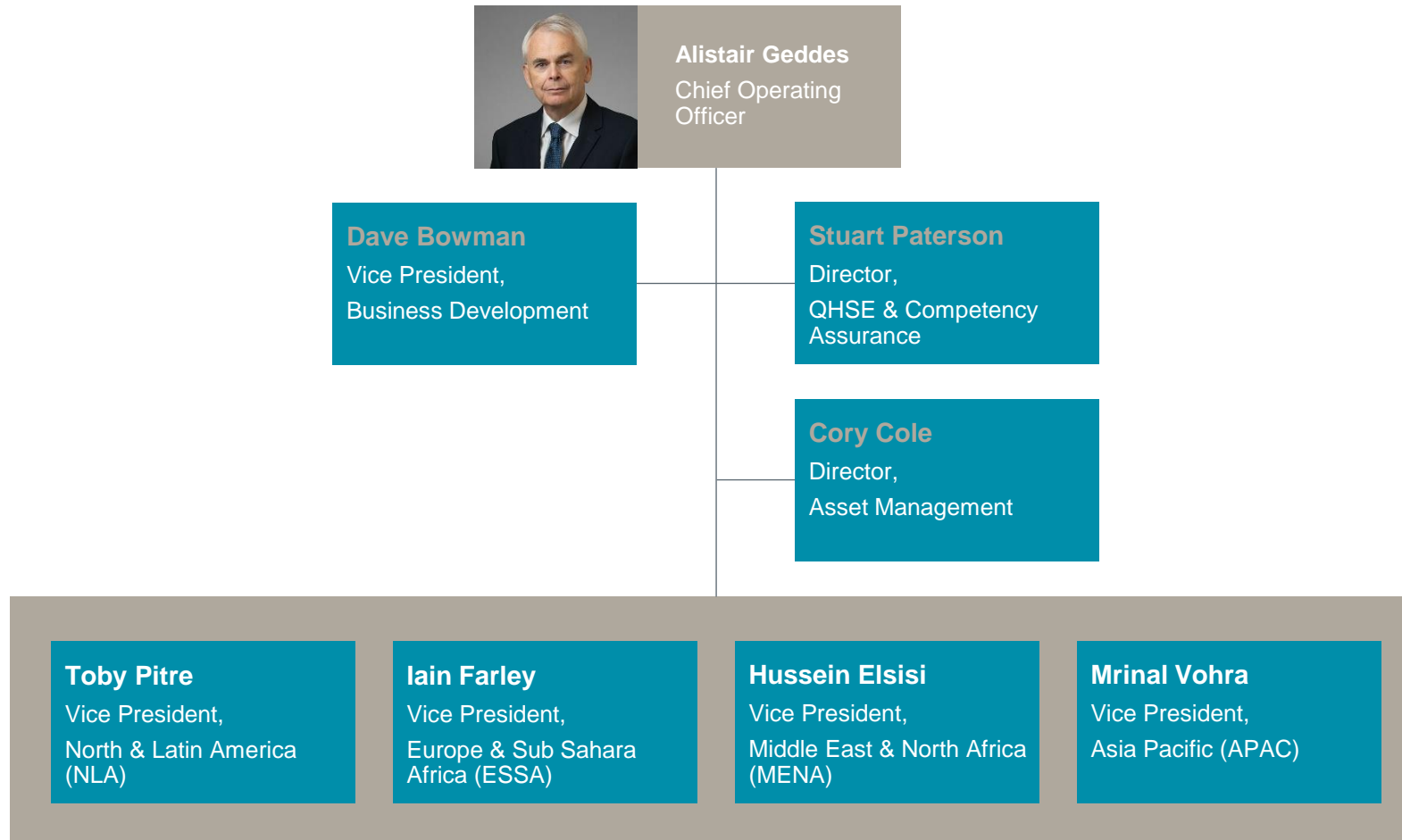
Jordan La Raia
Managing Region
Counsel, NLA



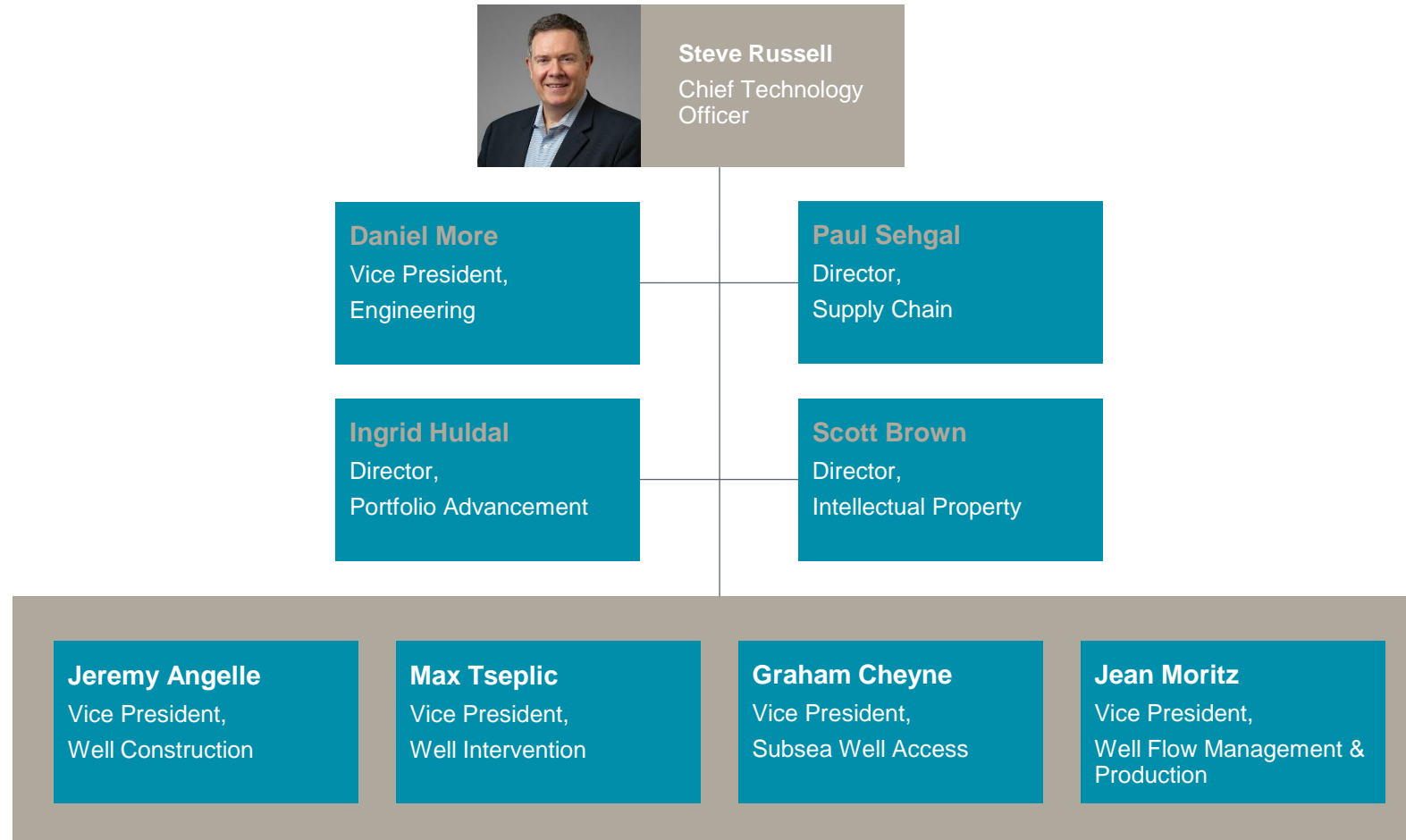
Jennifer Schulte
HR Operations & Projects

Alison Munro
Talent & Organizational
Development

Operations organization



Technology organization



Finance organization



Michael Bentham

Vice President,
Finance, Principal
Accounting Officer

Tulio Scacciati

Vice President,
Corporate Development

Scott Turner

Chief Information Officer

Domenico Sansalone

Group Treasurer

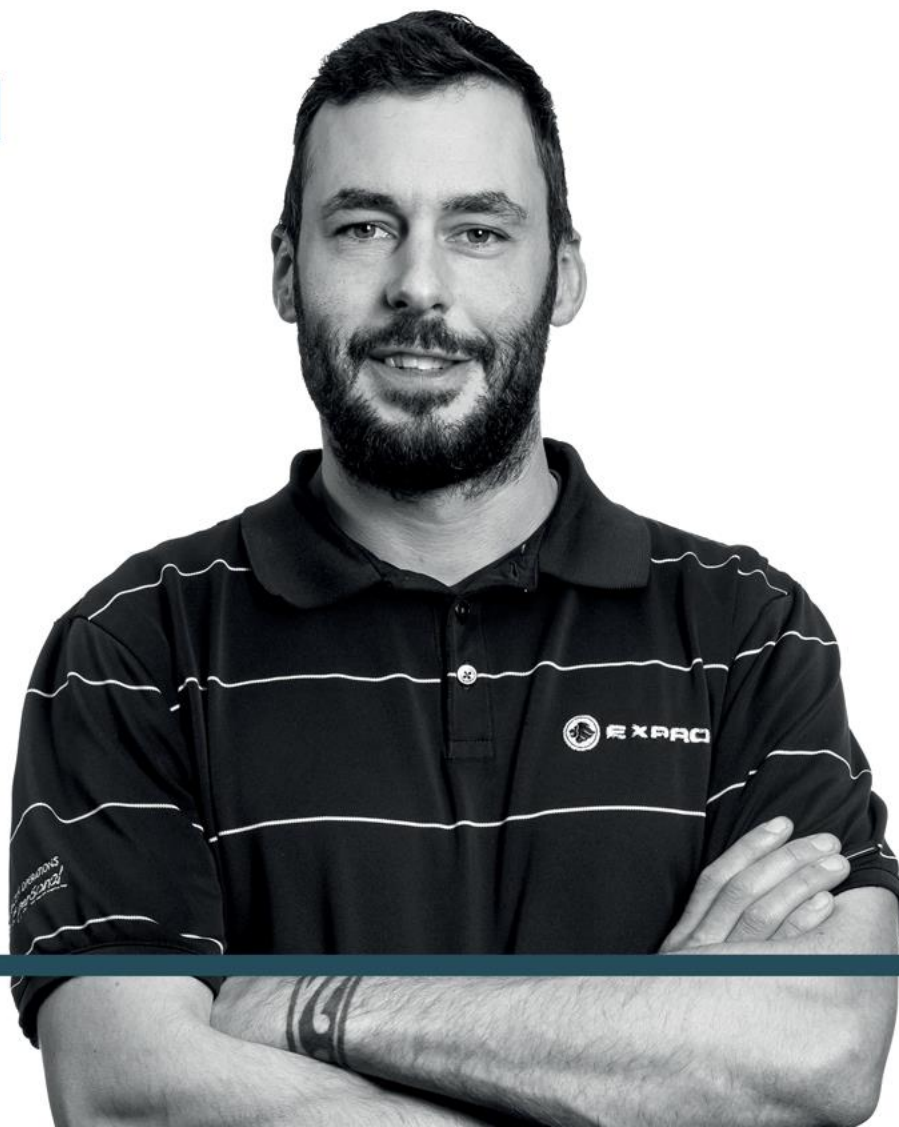
Dmitry Nekrasov

Group Tax Director

Heather Manning

Group Internal Audit
Director, SOX Integration
Lead

OUR MISSION



**To know everything
about your subject
is excellent.**

**To take genuine pride
in everything is Expro.**

OUR VALUES



People

At the heart of our success. We recognize the value of our people and are committed to providing the working environment, encouragement and personal development to achieve our goals.

Performance

Getting it right first time, every time. We are passionate about safely delivering excellent quality customer service. We embrace teamwork, individually and collectively assuming responsibility for delivering the highest value to all our stakeholders.

Planet

We are committed to reducing our own environmental impact. We will play a relevant role in the energy transition towards a lower carbon future. We are also determined to make a positive impact wherever we operate.

Partnerships

We listen to our customers and build relationships to understand their needs. We innovate with purpose to apply, adapt or develop our technologies and services to provide timely and effective solutions.

OUR BEHAVIORS



Think planet

We commit to reduce our environmental footprint and improve our local impact.

Be accountable

We take responsibility for and pride in our actions.

Champion safety

We strive to be at the forefront of safety, in everything we do.

Embrace teamwork

We work together to deliver an excellent service – we coach and learn from others.

Drive innovation

We inspire and innovate with purpose to seek out solutions for every challenge.

Partner customers

We build and sustain high value partnerships with our customers and colleagues.

Communicate effectively

Effective communication is key. We share information and respect everyone we work with.

Deliver quality

We focus on delivering operational excellence to all our stakeholders.

More than 80 years of market leadership

1938

Frank Mosing
opens Frank's in
Lafayette, Louisiana

1958

First rental
tool designed

1965

Tubular and Connector
Technologies added to
offerings

1962

Conductor Driving
and Slot Recovery
added to offerings

1978

Introduction of our
first designed and
manufactured 7 5/8" tong

1984

Industry first: 30"
500-ton handling tools

1983

Industry first:
36" Tong

1981

Frank's International
formed

1973

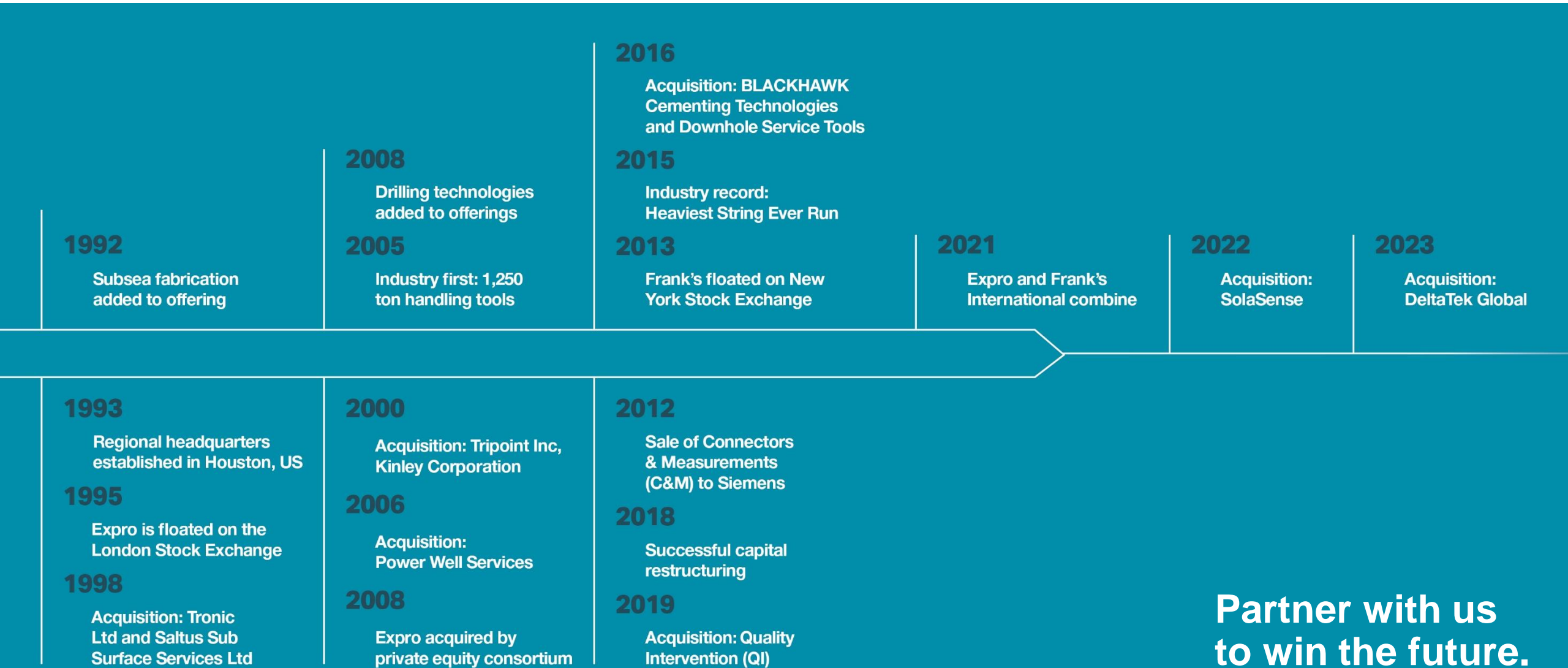
Expro founded as
a well testing and
wireline company

1975

First oil
produced from
the Argyll Field

1987

First acquisition:
Exal



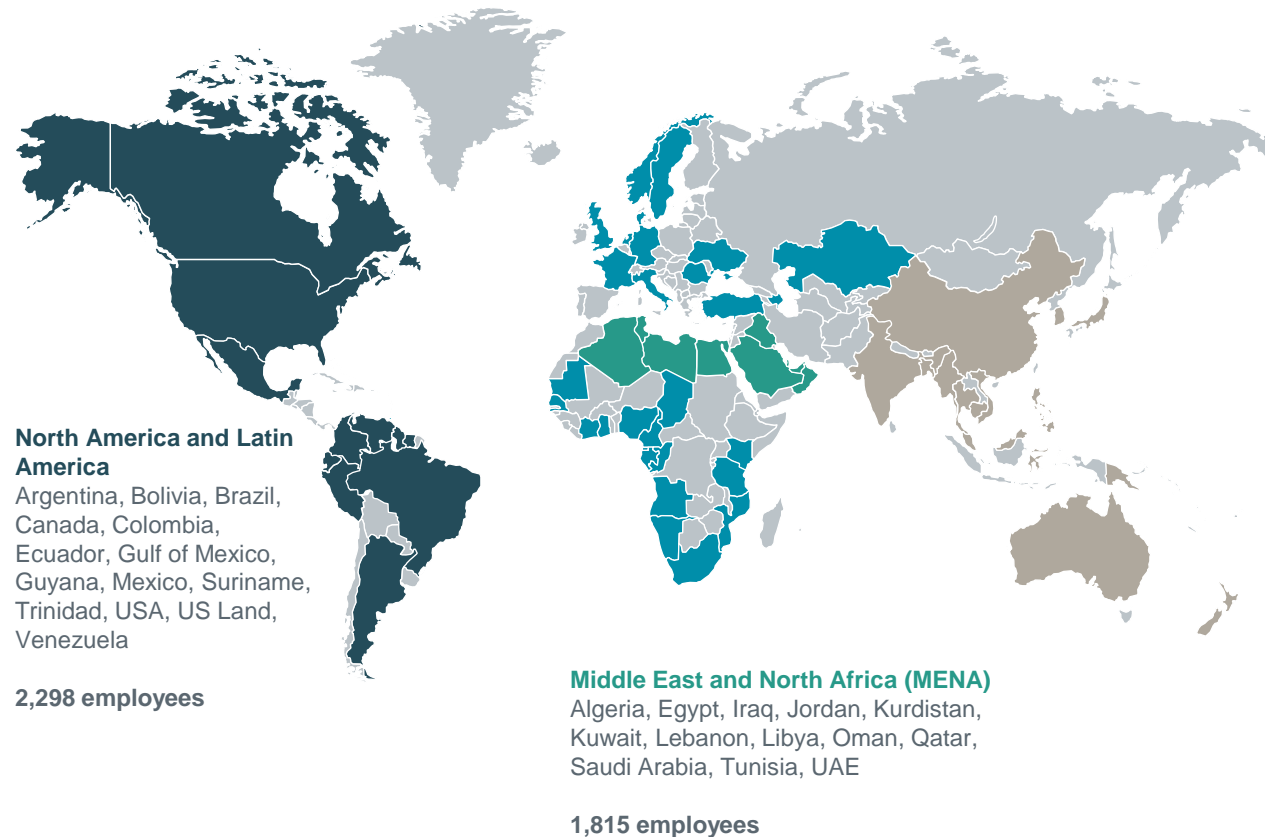
Partner with us
to win the future.

Extensive global reach

Expro employs over ~ 7,800 people in 64 countries, offering a truly global service solution

Operating headquarters are in the US – Houston

Regional headquarters are in Aberdeen, Lafayette, Houston and Kuala Lumpur



Always Championing Safety

QHSE Performance



Champion safety

We strive to be at the forefront of safety, in everything we do.

- Customers value the reliability, quality and safety of Expro's services
- Established reputation for delivering operational and technical excellence that exceeds customer expectations and underpins Expro's brand
- Executive leadership, managers and employees are committed to delivering the highest standards of safety performance
- Recognized for Order of Distinction Award, 18 consecutive years by the Royal Society for the Prevention of Accidents (RoSPA) for health and safety performance
- Industry certified: API Q2, ISO 9001:2015 quality management system, ISO 14001:2015 environmental management, ISO 45001 occupational health and safety

Lost Time Injury Frequency (LTIF) (million man hours basis)



Safety global track record

“

Safety is paramount in our organization. We pride ourselves on having a strong safety culture and we always encourage our employees to champion safety at every opportunity while we work.



Mike Jardon,
Chief Executive Officer

North & Latin America (NLA)

Alaska
7 years LTI free

Trinidad
6 years LTI free

Brazil offshore
6 years LTI free

Bolivia
8 years LTI free

Colombia
24 years LTI free

US Midstream
8 years LTI free

Europe & Sub-Saharan Africa (ESSA)

Ghana
14 years LTI free

Nigeria
8 years LTI free

Norway
15 years LTI free

Azerbaijan
10 years LTI free

Mozambique
19 years LTI free

Kazakhstan
13 years LTI free

Middle East & North Africa (MENA)

Algeria
3 years LTI free

Egypt
3 years LTI free

Iraq
12 years LTI free

Qatar
16 years LTI free

United Arab Emirates
6 years LTI free

Saudi Arabia
3.5 years LTI free

Asia Pacific (APAC)

India
25 years LTI free

Brunei
24 years LTI free

China
23 years LTI free

Malaysia
1 year LTI free

Indonesia
1 year LTI free

Australia
1 year LTI free

Service quality



Our license to work is founded upon a solid reputation for competency and dependability, an innovative and unified worldwide team whose skills are constantly evolving with the industry, deep insight into the needs and preferences of our customers and unrelenting commitment to customer service quality.



Alistair Geddes,
Chief Operating Officer

North & Latin America (NLA)

Customer job performance

2019	90.0%
2020	93.8%
2021	94.6%



Expro were recognized as strong leaders and contributors in pre-tour and floor meetings. Our team worked as a partner with our offshore personnel consistently demonstrating commitment to assist around the rig in activities outside of their base work scope.

Europe & Sub-Saharan Africa (ESSA)

Customer job performance

2019	92.4%
2020	93.8%
2021	94.1%



All Expro equipment worked with no problems at all. The crews were always available when needed and they kept everyone involved with what was happening with their operation. Crews integrated very well with all other vendors and drilling personnel.

Middle East & North Africa (MENA)

Customer job performance

2019	90.0%
2020	93.1%
2021	95.4%



I want to take the time to recognize the fantastic job and the excellent performance done by the crew running the completion string in KZN-378 which have been achieved effectively in less operational time without comprising quality and safety.

Asia Pacific (APAC)

Customer job performance

2019	90.0%
2020	92.4%
2021	94.1%



Our team proactively planned and demonstrated clear communication and excellent support OE performance including a 100% safety record for the project.

Energy transition

Citizen of the World

Enhance today.
Maximize efficiency.
Transform tomorrow.

Expro will always put the right people forward to do the right work for the right customers in the right places. But we have a duty to go far beyond this.

We want to be more **relevant** in today's world. We must reduce our own environmental impact. Our industry is part of the solution to address a lower carbon future – and **we are committed to playing our part**.

We are advancing and developing technologies to achieve this and participate in maximizing recovery. Our focus and commitment on innovation, efficiency, and digitalization better informs our customers, enables operational excellence and facilitates more timely and informed decisions.

Ultimately making an impact on the future of each and every one of us.



Citizen of the World – Our ESG Commitment

Taking pride in being a responsible and transparent business that operates a clear set of environmental, social and governance principles

Environmental

Our Planet

Achieve net zero CO₂e emissions by 2050 and a 50% reduction of carbon intensity by 2030

Our Services

Adopting and advancing technologies and adapting our services to participate in the energy transition and deliver on sustainability objectives of the Company and its clients

Social

Our Communities

Engagement with local communities to reduce the impact of our operations and to positively contribute to their environment where possible

Our People

Build on industry leading safety records; Attract, develop and retain the best talent to sustain a diverse, inclusive and performance-oriented working environment

Governance

Our Structure

No dual class shares, classified board, poison pill or supermajority provisions; Commitment to regular Board refreshment and Board diversity

Our Commitment

Performance based executive compensation in line with peers and aligns with all stakeholder interests to create strong returns

Addressing customers carbon reduction challenges

Circa 47% of R&D investments in 2023 address customers carbon reduction challenges

We are a citizen of the world – addressing our own, and the industry's effects on the planet to ensure a positive, sustainable impact.

We “walk the talk” by joining industry leaders in committing to a more sustainable and lower-carbon future, working to achieve net zero CO₂e emissions by 2050 and 50% reduction in carbon intensity by 2030.

Honesty, transparency and accountability lie at the core of this citizenship.

	Well Construction						Well Flow Management												Subsea Well Access				Well Intervention & Integrity										
	Casing technologies	Completions Technologies	Drilling Technologies	Conductor Driving & Slot Recovery	Cementing Technologies	Downhole Service Tools	Tubulars Products & Services	Well Test	DST	TCP	Fluid Sampling & Analysis	Acumen Metering Solutions	Pipeline and Flarestack Services	Early Production	Onshore Production Units	Enhancement Systems	Facility Upgrade	Operations and Maintenance	Water treatment	Wireless Well Solutions	Permanent Downhole Monitoring	SSTTA	RWIS	IRS	LWI	Mechanical Slickline	Cased Hole Applications	Galea™	CoilHose™	Octopoda™	Safewells®	DFOS Slickline	Petroleum Engineering Solutions
Access		X	X					X	X	X	X			X						X		X	X	X	X	X	X	X				X	X
Optimize	X	X	X	X	X	X	X	X	X	X	X	X		X	X	X	X		X	X	X	X	X	X		X	X	X	X	X	X	X	X
Assure	X	X	X	X	X	X	X	X	X	X	X	X	X			X	X	X	X	X	X	X	X	X	X	X	X	X	X	X	X	X	X
Drive to Net Zero	X	X	X					X	X	X	X	X		X	X				X	X	X	X	X	X			X	X	X	X	X	X	X

Our Planet Road Map

Scope 1

Direct emissions from owned or controlled sources

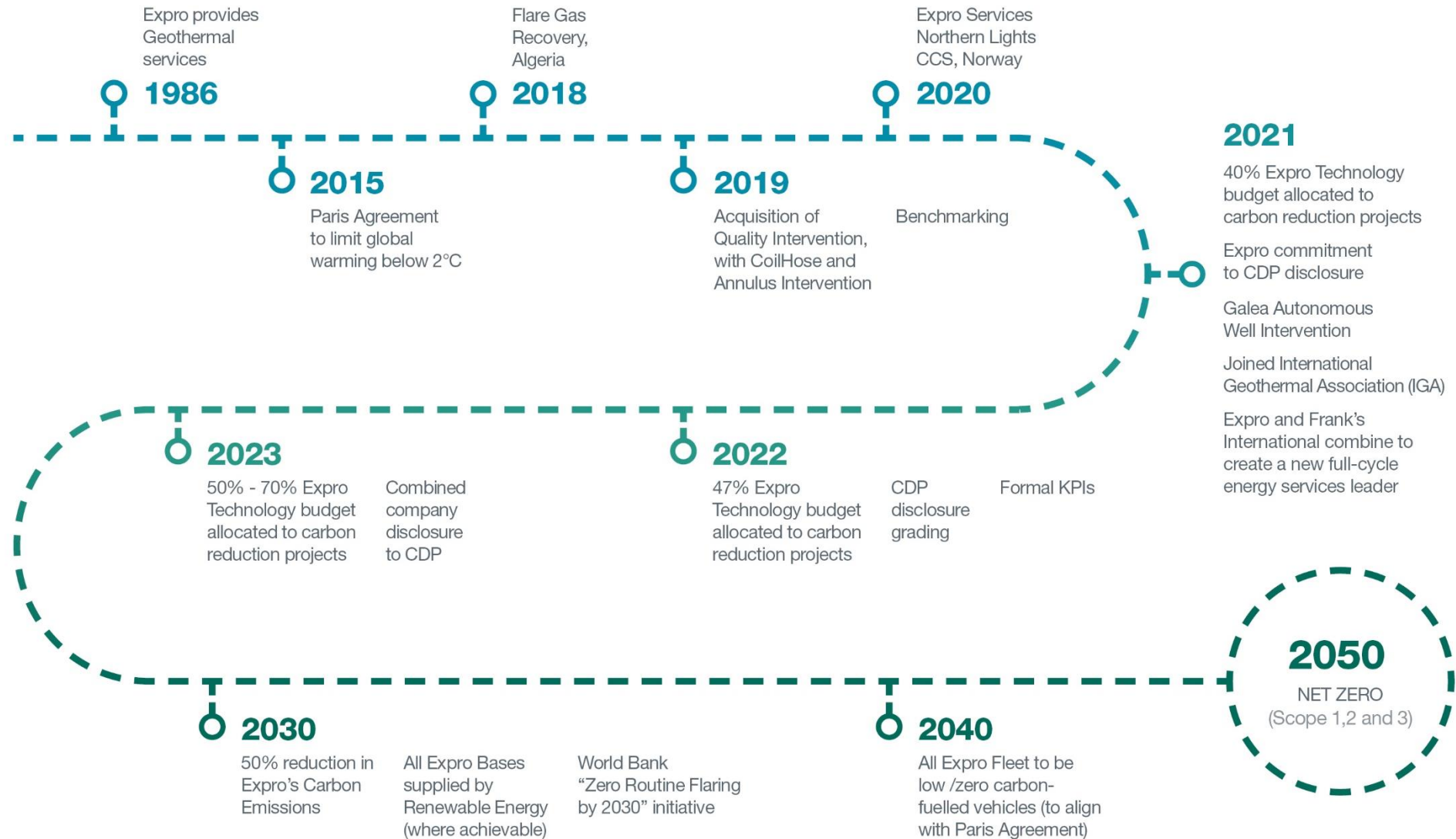
Scope 2

Indirect emissions from the generation of purchased electricity, steam, heating and cooling consumed by Expro

Scope 3

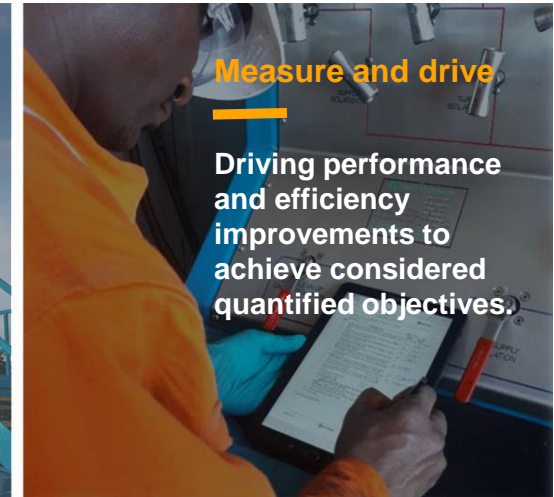
Includes all other indirect emissions that occur in Expro's value chain

Year on Year Scope 1, 2, 3 reduction



Commitment to sustainability

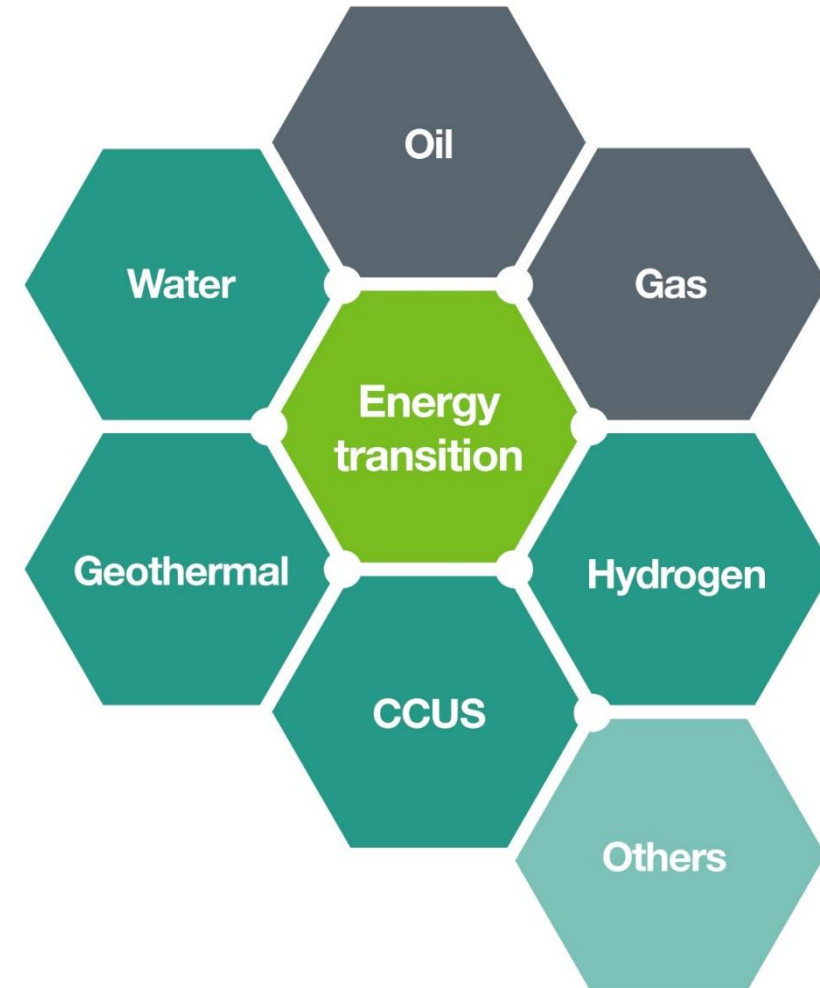
Expro is committed to reducing harm to the environment and promoting sustainable practices to achieve extraordinary performance.



Portfolio Shift

Our participation and focus

- We have transferable skills and services applicable to the emerging new energy segments
- We participate in most of these today
- Specific focus on geothermal and water
- Priority areas for Expro's Portfolio Advancement team



Portfolio Shift

Circa 47% of R&D investments in 2023 address customers carbon reduction challenges

Customer drivers

(DATA, CapEx discipline and Net Zero)

- Lower cost
- Lower carbon
- Faster and better decisions

Extraordinary performance through technology and innovation

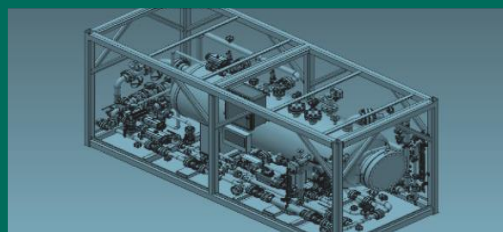
Production optimization-focused on gas

Reduced footprint of ops (physical and emissions)

Flare-less and or flare redux / analytics

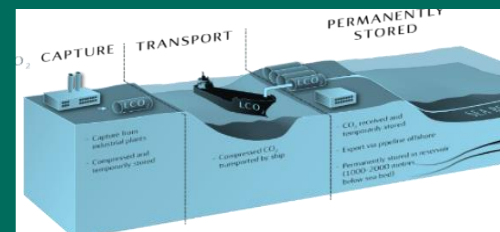
Energy market evolution (CCUS, GEO, Hydrogen etc)

Technology Investments Enhance today.



- Flared gas recovery / avoidance
- Vented gas avoidance
- Electric winches
- Greaseless cables
- 4 Phase Intelligent Separator with FlowMAX adjustable Weir System and Coriolis meter on all separator flow lines
- Autonomous well intervention system
- FlameEx automated safety shut off system
- CoilHose
- Rigless intervention
- Annulus intervention
- Multiphase Meter
- Advanced analytics
- Down Hole Fluid ID
- Reducing energy consumption by maximizing drilling efficiency
- Electric tool development
- Hydraulic Distribution Module usage

Initiatives / projects Maximize efficiency.



- Northern Lights CCS in Norway
- Mercury in gas trains removal in Australia
- Flare gas recovery in Algeria
- Methane hydrate projects in Asia
- Geothermal projects globally
- Pipeline services in USA
- CSR activity, i.e. beach clean-ups, etc

Our commitments Transform tomorrow.



- OEUK Roadmap 2035
- Net Zero Technology Centre
- International Geothermal Association
- CDP
- Optimize Expro's position in:
 - CCUS
 - Geothermal
 - Hydrogen
 - Water
 - Flare emission analysis

Measure and Drive

Our commitment to the energy transition

In 2021, we chose to disclose Expro's first submission of data and associated plans to address Scope 1, 2, and 3 emissions with CDP, a not-for-profit charity that runs the global disclosure system for investors, companies, cities, states and regions to manage their environmental impacts.

We were pleased to achieve the score of C (Awareness) using the United Kingdom area of operations as a pilot. This consisted of 17 operational bases and was the first step in standardizing our process to address our environmental impacts.

Our strategy for 2022 was for global disclosure to take a significant step forward on effectively implementing protocols across our global operations.

We were proud to be awarded **B rating** which specifies Environmental Management commitment. Companies that score a B have addressed the environmental impacts of their business and demonstrate good environmental management. This B-score also shows evidence of Expro managing our environmental impacts across our global operations.



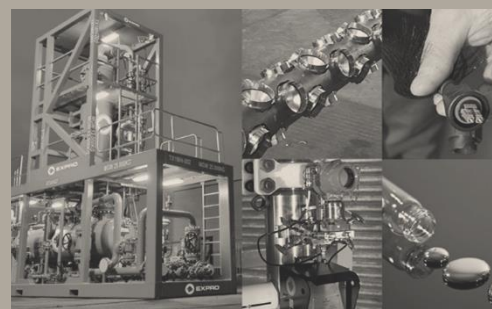
What we do.

Balanced portfolio – capabilities across the Well Lifecycle



Well Construction

Innovative, high value, low risk well construction solutions provider with a focus on operational efficiency and well integrity.



Well Flow Management

Proficiently gathering valuable well and reservoir data, with the utmost regard for well-site safety and environmental impact.

Fast-track cost-effective, early field production, optimization and enhancement systems.



Subsea Well Access

Ensuring safe, efficient and cost effective subsea well access systems across the entire lifecycle of the well.



Well Intervention and Integrity

Deployment, insight and enhancement solutions to enable reservoir and well surveillance, production optimization and asset integrity assurance.

Balanced portfolio – capabilities across the Well Lifecycle



Well Construction

Completion Technologies	ArticuLock®
Casing Technologies	Drilling Technologies
Cementing Technologies	Conductor Driving & Slot Recovery
Cure Technologies	Tubular Products & Services
Downhole Service Tools	



Well Flow Management

Well Testing	Acumen Metering Solutions
Drill Stem Testing (DST)	Water Treatment
Tubing Conveyed Perforating (TCP)	Offshore Production Units
Fluid Sampling & Analysis	Enhancement Systems
Pipeline and Flarestack Services	Facility Upgrades
Permanent Downhole Monitoring (PDM)	Operations & Maintenance
	Wireless Well Solutions



Subsea Well Access

Subsea Test Tree Assembly (SSTA)	Light Well Intervention (LWI)
BOP Spacer / Spanner Joint Assembly (BOPSJ)	Riserless Subsea Well Intervention System (RSWIS)
Open Water Intervention Riser System (OWIRS)	Hydraulic Intervention System (HIS)



Well Intervention and Integrity

Mechanical Slickline	Petroleum Engineering Solutions
Cased Hole Services	SafeWells®
CoilHose™	Distributed Fiber Optic Sensing (DFOS)
Octopoda™ Intelligent Intervention	

Portfolio services across the lifecycle

Enhanced early visibility into the needs of customers and a broader scope of offerings across the entire well lifecycle

- Well Construction
- Well Flow Management
- Subsea Well Access
- Well Intervention & Integrity

Stage of field (years)	+ (8)	(6)	(4)	(2)	2	4	6	8	10	12	16	18+
Exploration & appraisal												
Development												
Production												
Abandonment												

Portfolio services across the lifecycle

A portfolio that spans the reservoir and well lifecycle

Product Line and associated services	Well Construction						Well Flow Management														Subsea Well Access				Well Intervention & Integrity								
	Casing Technologies	Completions Technologies	Drilling Technologies	Conductor Driving & Slot Recovery	Cementing Technologies	Downhole Service Tools	Tubulars Products & Services	Well Test	DST	TCP	Fluid Sampling & Analysis	Acumen Metering Solutions	Pipeline and Flarestack Services	Early Production	Onshore Production Units	Enhancement Systems	Facility Upgrade	Operations and Maintenance	Water Treatment	Wireless Well Solutions	Permanent Downhole Monitoring	SSTTA	RWIS	IRS	LWI	Mechanical Slickline	Cased Hole Applications	Galea™	CoilHose™	Octopoda™	SafeWells®	DFOS Slickline	Petroleum Engineering Solutions
Reservoir & Well Lifecycle																																	
	X	X	X	X	X	X		X	X	X	X	X							X	X		X				X	X		X		X	X	X
	X	X	X	X	X	X	X	X		X	X	X							X	X	X	X	X	X	X	X	X		X	X	X	X	X
	X		X				X	X			X	X		X	X	X	X	X	X	X	X	X	X	X	X	X		X	X	X	X	X	
	X	X	X	X	X	X			X	X		X							X	X	X		X	X	X	X	X		X	X	X	X	X
De-commissioning	X			X	X	X			X	X		X						X	X	X		X	X	X	X	X	X		X	X	X	X	X

Well Construction

An industry leader in tubular running services, tubular fabrication, and speciality well construction with a focus on complex and technically demanding wells.

The experience to understand and solve complex customer challenges with a portfolio of technology-focused well construction solutions.

Strategic advancements

Continuously transforming the construction of wells by combining over 80 years of experience with a culture of aggressively developing differentiating technology.

Further advancements planned via:

- Optimizing process efficiency on the rig floor with advanced digital solutions.
- Improving well integrity with continued metallurgical research and development in the handling of corrosion resistant alloys (CRA) and constructing robust cement barriers with proprietary technologies.
- Mitigating risks of exposure with high capacity, gas rated threaded connections for large diameter tubulars.
- Advancing the ability to safely construct deeper wells with the industries only complete 3,000,000 lb. casing installation and cementation system.

Strengths

- Industry pioneer in the handling of tubulars, supported by years of experience and engineering capabilities.
- Market leader in intelligent and HP/HT completions.
- Over 50 years of experience in conductor driving and associated services.
- Recognized leader in providing advanced fabrication services for fatigue sensitive tubulars and subsea components.
- Innovative performance drilling technologies that challenge and transform industry expectations.
- Well servicing tools with in-class leading ratings and capacities for the most demanding wells.
- Game-changing cementing technologies that establish well barriers reliably while improving safety on the rig floor.



Key stat
Industries top 5
heaviest strings
installed
**2,435
Kip**
(Heaviest)

Key stat
Number of wells
constructed per
year
~4,000

Key stat
Addressable
market
\$3.8bn

Well Flow Management

The sector's most proficient provider of well flow management solutions for almost 50 years.

We provide global, comprehensive well flow management systems to proficiently gather valuable well and reservoir data, with the utmost regard for well-site safety and environmental impact.

Expro further support full life-of-field through **production to abandonment** with innovative and agile solutions.

Strategic advancements

We continue to play our part in becoming the solution to address a lower carbon future.

Further planned advancements:

- Providing fast track production optimization solutions
- Advancing global power and heat generation from Geothermal resources
- Remote/automated Well Test & Production solutions
- Progressing decarbonization and environmental activity
- Emissions Measurement & Management
- Carbon Capture and Underground Storage

Strengths

Fully integrated well clean-up, exploration and appraisal services including:

- Largest global fleet of innovative, reliable flow management equipment
- Specialists in demanding high rate gas flow back and HT/HP systems – with industry-unique ultra-high rate (+100Mscfd) equipment & metering expertise
- Real-time data acquisition and metering - improving efficiency and lowering operator service cost
- Fluid sampling and analysis at the wellsite
- Unique trace element capture and analysis specialities
- Efficient sand, solids and water management capabilities
- Fast-track extended well test and EPF solutions



Key stat
Successful Well Test Operations
+10,000
(~850/Y)

Key stat
Global Well test Packages
~170

Key stat
DST Operating Efficiency – last 5 years
99.8%

Subsea Well Access

Market leading technology provider, ensuring safe well access and optimized production.

Providing the most reliable, efficient and cost effective well access systems, throughout the lifecycle of the well.

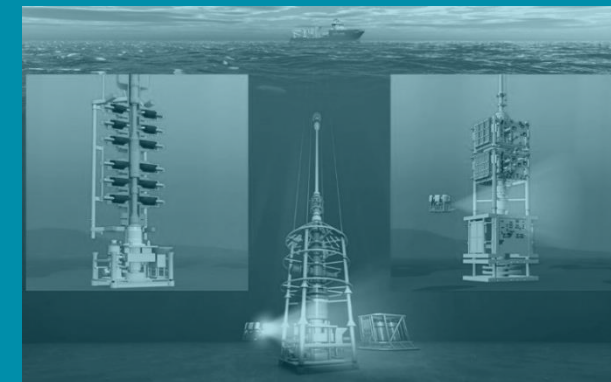
Strategic advancements

Full portfolio of subsea well access solutions derived from a foundation of 25+ years of technology leadership in Subsea Test Tree Assemblies.

- Maintain leading position in subsea test tree systems due to advanced technologies and demonstrated reliability
- Complete subsea well access portfolio ensuring safer and efficient subsea well intervention throughout the life cycle of the subsea wells
- System integrator ensuring that all sub-systems function together in a subsea well intervention system

Strengths

- Leading provider of Subsea Test Tree Assemblies
- Barrier isolation, disconnect capability, and strip through & seal/ shear & seal technology to safely manage the containment of hydrocarbons
- Integrated approach to well access and integrity to ensure safe well access thought the lifecycle of the well
- Subsea control & valves designed internally and internal capability to carry out bespoke solutions to meet the relevant challenges faced thought the life cycle of the well
- Intervention Riser System increases efficiency, removing the necessity to deploy marine riser and BOP
- Expro's Riserless Well Intervention System is a cost effective, rapid deployment and operation



Key stat
Expro market share in SSTTA systems

~ 57%

Key stat
Largest large bore global SSTTA fleet

~ 75 strings

Key stat
Subsea operations

3,000+

Well Intervention and Integrity

A leading global provider of well intervention services.

A safer and smarter well integrity and intervention solutions partner.

Strategic advancements

Continue to expand technology to provide critical well data and services that assure well integrity and optimize production

Market leadership will be sustained by:

- Leveraging our global operating footprint and relationships to deliver cost-effective, innovative solutions and reduce carbon emissions
- Continued development of technologies and services required for the energy transition
- Extension of intervention services including autonomous slickline
- Holistic well integrity management services; assurance, remediation, monitoring and reporting
- Intelligent software solutions which predict critical well parameters

Strengths

- World's largest independent wireline service supplier
- Offering leading-edge technologies and solutions that optimize performance from existing well stock and advance operators energy transition roadmaps
- Well Integrity management and software solutions
- Octopoda™ provides a unique annulus intervention capability to assure well integrity and enhance production
- CoilHose™ provides a lower cost, more efficient alternative to coiled tubing
- Real time data capture and interpretation performed at the well site



Key stat
Expro market share

10%

Key stat
Asset fleet packages

~250

Key stat
Runs per month

9,000

Our new technology

Discover what's possible

Inspire | Create | Differentiate

Innovation is important to us.

Our determined commitment to product portfolio enhancement, increasing sophistication in technology and the application of resources and IP development will ensure that Expro goes beyond merely meeting customer needs, but addressing our impact on the future. We want to be more relevant in today's world.

We're open. We are a business that thinks ahead. We're bold. And we're direct. It's a way of working that helps you address your critical energy challenges of today.

Changing for the better.



Innovative, future-facing technology

“

We are a visionary market influencer, capable of designing and deploying novel solutions that win the day by leveraging innovative, future-facing technology.

Our solutions continuously challenge established methods of conducting operations in fresh and bold ways.”

Innovate with purpose

What we are doing:

- **Digital transformation:** Evolving our digital initiative to unleash the power of data within our business practices to create a unique customer experience
- **Partnership:** We continue to build and sustain high value partnerships to support the unique customer experience we create
- **Planet:** We are advancing and developing technologies to help create a lower carbon future and participate in maximizing recovery
- **Intelligent automation:** We are looking at ways to increase accuracy and uptime, improving safety, reducing costs and personnel on board



CoilHose™ Light Well Circulation System

Providing a low cost and efficient alternative to traditional coiled tubing operations

Delivering a safe, versatile and OPEX effective service with a low operational resource requirement

- Field proven technology with more than 100 runs
- Minimizes the loss of hydrocarbon production
- Reduces overall cost of intervention
- Light, compact and efficient footprint
- Mobile and flexible set-up
- Lower number of personnel required (3-4 multi-skilled crew)
- Can be rapidly deployed universally (3-4 hours) on lightweight topsides with limited deck space



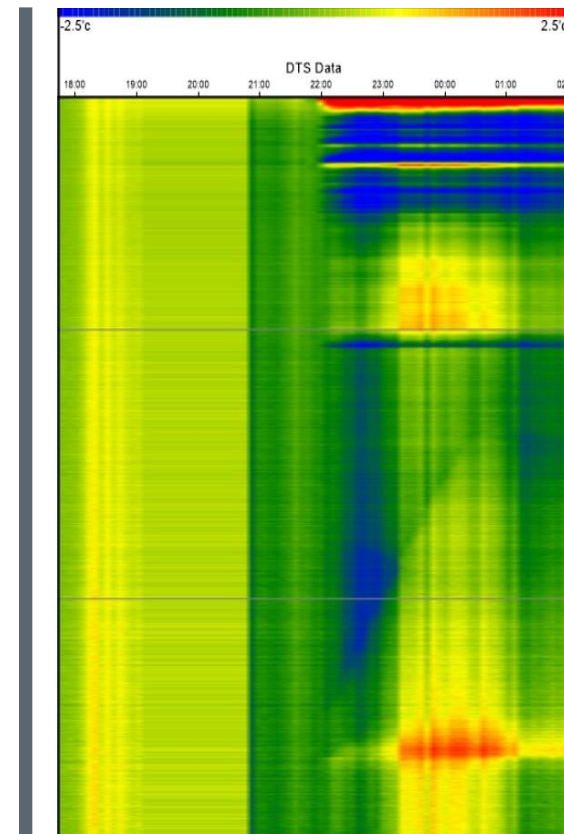
Distributed Fiber Optic Sensing (DFOS) Slickline

From deployment to evaluation to remediation, Distributed Fiber Optic Sensing Slickline gives you enhanced insight into your well

Using thru-tubing fiber optic deployment to enable operators to optimize their well stock in real time

Distributed Fiber Optic Sensing (DFOS) Slickline allows well performance to be assessed over its entire length during a Slickline intervention.

- Easy to deploy
- Enables distributed temperature and acoustic sensing
- Monitors dynamic behaviour
- Fast processing of data on-site enables remediation to take place during the same rig up or intervention campaign
- Other logging tools can be deployed on the bottom of the DFOS Slickline to maximize the intervention opportunity



Annulus Intervention System – Octopoda™

Octopoda™ - Annulus Intervention system enables intervention, circulation, injection of sealant and diagnostics in a pressurised annuli

Safe, OPEX and ABEX efficient remediation of annulus integrity issues

- Innovative and unique system to access well annuli
- Enables inspection and repair of annulus integrity issues
- Rapid mobilization
- Modifications for different wells
- Increased oil recovery through revitalization of shut in wells
- Environmental and groundwater protection
- Efficient footprint and personnel requirements
- Reduces the requirement for a workover rig or heavy equipment



Galea™ Autonomous Well Intervention System

Ensuring production continues and is optimized for the well conditions

A fully automated, efficient and cost effective solution to keep your well producing while reducing the environmental impact of your operations

- Reduction in deferred production
- Reduction in operational overheads
- Wax scraping intervals defined by well conditions rather than availability of wireline crew and equipment
- Reduced HSE exposure for personnel due to reduced time spent at well site
- Reduced environmental impact to field and surrounding areas
- Allows production to continue in remote locations or areas that are inaccessible to wireline crews at certain times of the year
- Potential for 24/7 monitoring from anywhere in the world
- Elimination of accidental wire breaks

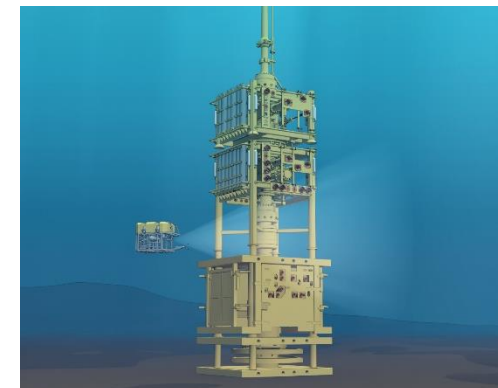


Open Water Intervention System

**Lower Riser /
Emergency Disconnect
package design has
extensive track record
of over 900
deployments**

**Compact and lightweight system
(approx. 50 tonnes)**

- Deployed from client rig or specially adapted vessel
- Provides well control and disconnect across the life cycle of subsea well
- Ability to deploy full range of intervention services
- Allows the deployment of Coil Tubing with ability to shear & seal up to 2-7/8" coiled tubing and wireline/slickline with gate & seats
- Rated to 10,000psi, 7-3/8" Production Bore & 2-1/16" Annulus Bore and up to 3,000m water depth
- Design Temperature Range 0°F to 250°F
- H2S NACE MR 0175 + CO₂ service class
- IWOCS supplied with XT control capability, negating the requirement for additional 3rd parties
- Controls through direct hydraulic and electrohydraulic systems
- Interface with horizontal and vertical trees

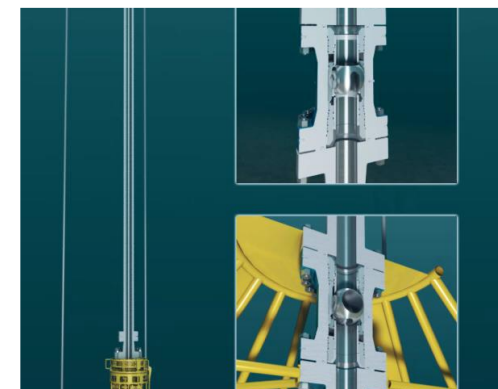
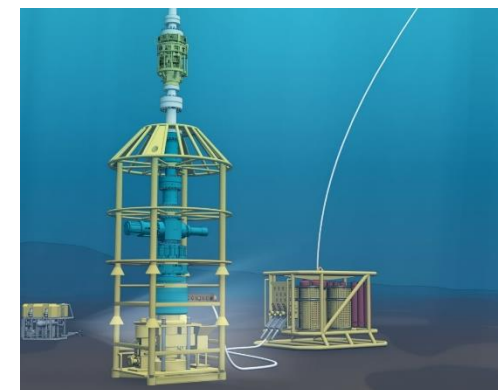


Riserless Subsea Well Intervention System

More than 70% of all life of well intervention requirements can be performed with a RWI system

Compact and lightweight system (approx. 45 Tonnes)

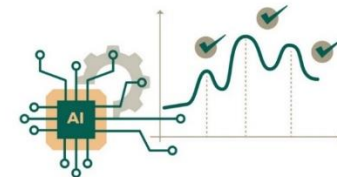
- Deployed from an Expro managed mono-hull vessel, either through a moonpool with smart tower system or “over the side” with AHC wireline mast or from a modified client vessel
- Provides means of well control and disconnect
- Rated to 10,000psi, 7-3/8” Production Bore and up to 3,000m water depth
- Design Temperature Range 0°F to 250°F
- H2S NACE MR 0175 + CO2 service class
- System utilizes Expro’s ball valve technology with ability to shear & seal on intervention media
- Ability to deploy slickline, E-Line and Coilhose through water
- Allows for the intervention tool strings up to 22m long
- IWOCS through direct hydraulic and electrohydraulic systems
- Interface with horizontal and vertical trees



iCAM[®] Connection Analyzed Make-up System

The iCAM[®] system's artificial intelligence engine and machine learning capabilities provide automated evaluation of connection make-up data

- Automated evaluation and prediction of CAM make-up using machine learning and big data analytics
- More accurate and consistent, data-driven decisions and recommendations to increase connection integrity
- Reduces POB and workload
- Can be monitored remotely through Expro's DISPLAY[™] technology in real-time, globally
- Reduces connection lay-downs and reworks
- Designed with operations in mind to increase reliability and maintain, or improve, current RIH efficiency
- Phased approach with increasing capability at each deployment



**2019 Bronze
Award Winner**

**2019 New
Technology
Showcase
Winner**

XT4™ GT Connection

Our XT4™ GT premium weld-on connector delivers reliable seal performance in the most complex deep-water and ultra-deep-water applications

Extreme Tension

Extreme Compression

Extreme Bending

Extreme Temperature

- The 22" XT4™ GT is a certified gas-tight connector in accordance with the latest API RP 5C5:2017 CAL I standards
- The connection was tested on 22" x 1.50" X80 pipe while also tested to the severity of API RP 5C5:2017 CAL III standards in which the connection was subjected to elevated temperature testing at 275°F prior to achieving 95% in both Test Series A and B
- The 22" XT4™ GT is a deep-stab connector that features an internal metal-to-metal seal, external environmental O-ring seal with a back-up PTFE ring seal, tapered thread profile, tapered thread cone, and contoured noses and shoulders
- Consistent 3.5 turn makeup
- High Makeup Torque resists backout (Min. 72,000 Opt. 76,000 Max. 80,000 ft-lb)
- With a strong background in Tubular Running Services, the XT4™ connection was designed to be installation friendly and is compatible with a complete range of handling equipment
- The XT4™ connection can be made available with a completely hands-free Spring ARK Anti-Rotation Key



BRUTE® Packer System

Utilizing BRUTE® High Pressure-High Tensile Packer, along with the field proven BRUTE® Storm Valves and BRUTE® Circulation Valves, to provide a solution to multiple well suspension and well testing challenges

- API 11D1 & ISO 14310 V3 / 19AC V3 Annex A/D validated for reliable quality and performance control
- Modular design increases range of application and operational efficiencies while reducing rig site inventory
- Best in class packer ratings with combined loading capability up to 1MM lbs. and 10,000 psi pressure differential
- Simple, non rotating designs allows for faster valve operation to significantly increase operational efficiencies and rig time savings
- Newly released 22" BRUTE® System available for deployment.



2020

Finalist – Best Well Integrity
BRUTE®



iTONG™ Intelligent Well Construction Solution

The industry's only truly single push button tubular make-up solution, allowing the operator to control, execute, verify, and validate every connection make-up to optimize connection integrity.

- Remotely operated through a handheld tablet
- Adaptive to Drillers Control Integration
- Advocates efficiency gains, cost savings and personnel reduction from the red-zone
- Promotes industry's ESG initiatives for cleaner energy
- Validates proof of value to the industry

- Designed for the latest technological adaptation in the digitalized rigs during Well Construction phase.
- Customized to any rig configuration.
- The programmable logic controller (PLC) platform validates all safety measures for flawless execution for maximizing operational efficiency.
- The iTONG™ solution is coupled with Expro's iCAM® tubular connection makeup system, which applies machine learning and artificial intelligence to autonomously verify tubular connection make-up safely and reliably at every connection joint in the tubular running process.
- Successfully deployed in 2021 for more than five months in offshore North Sea with full customer satisfaction and positive technology recognition.
 - 50% reduction in POB
 - 40% reduced connection makeup time
 - 146 tons of CO2 e reduction
- Revolutionizes the tubular running process providing the fully autonomous solution with the purpose of achieving operational excellence through a Digital Solution.



ArticuLock®

**Simple and robust tool
capable of opening up
weather windows for
installing subsea
equipment**

Eliminating stress and fatigue

Expro's Articulock® technology provides open-water, riser, casing or landing string articulation even in extreme conditions to:

- Extend the weather window for deployment of subsea trees, flow-bases, emergency disconnect packages (EDP) lower riser package (LRP) or casing strings etc by > 400%
- Eliminate low cycle fatigue (remove stiffness) associated with hang-off or suspending loads during riserless or open-water operations
- Provides a contingency to allow subsea deployment for subsea operations to continue even in high significant wave height, sea-swell or loop current conditions
- Reduce Waiting On Weather (WOW) time



Cure Technologies

With advanced downhole technologies, Expro's mission is simple: to save rig time through ultimate cement placement

SeaCure®



SeaCure® is a revolutionary subsea cementing system, which delivers stabbed-in, inner string cementing for subsea wells, eliminating the need for shoe tracks and improving cement placement, drill out performance and removing the need for remedial cementing, allowing operators to achieve Ultimate Cement Placement.

SeaCure® is a completely mechanical system, making it both robust and reliable. This technology is saving rig time by reducing costs, risk and unproductive time.

QuikCure®



By introducing a controlled – temperature heat sweep into their inner string by Casing ID (inner) annulus through the SeaCure® cementing assembly, the QuikCure® process can increase compressive strength build-up in the annular placed slurry by up to 500% and reduce WOC by up to 70%.

Additionally, heating the slurry through QuikCure® improves the cement settling transition times by up to 50% helping to mitigate shallow flow risks and ensuring safe, reliable cementing operations.

FloatCure®



FloatCure® provides major key benefits while extending your reach through reducing the system net effective weight. However, unlike conventional buoyancy assist floatation equipment, FloatCure® maintains buoyancy an pump-through capability for the casing/liner system throughout the entire running and cementing operations.

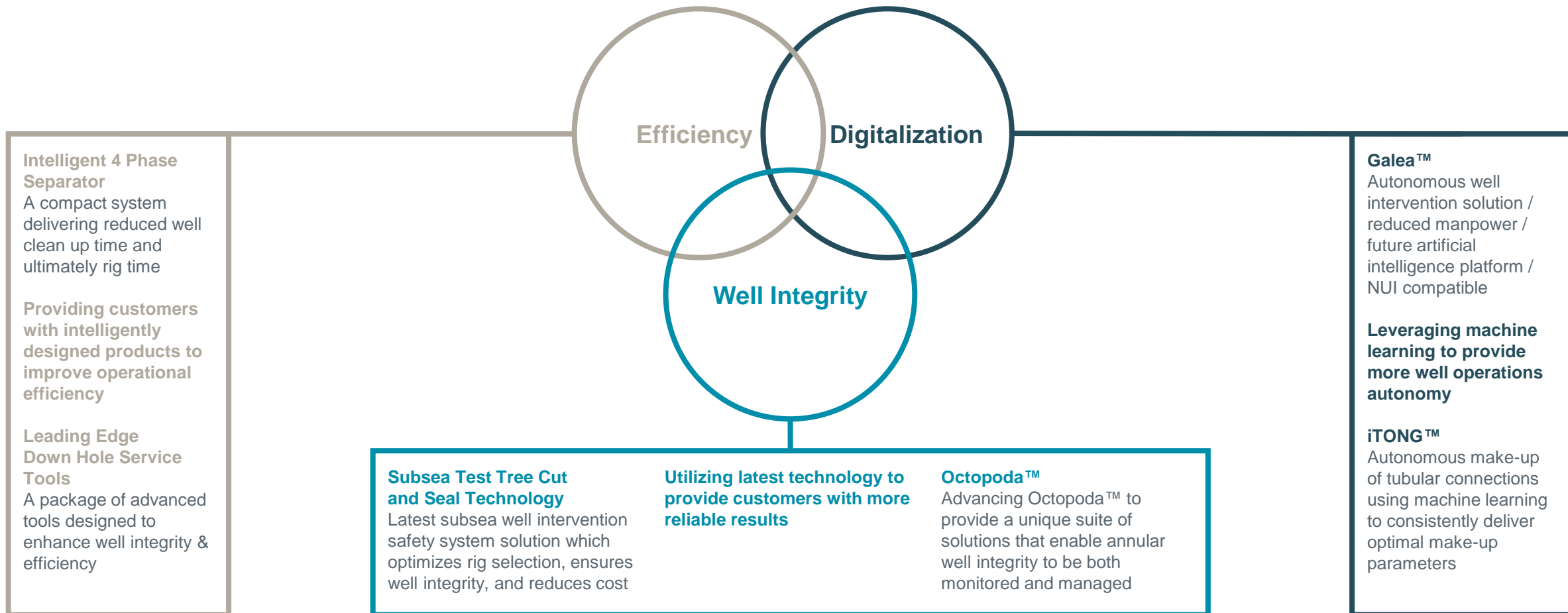
This differentiation means that, only FloatCure® can provide critical well cleaning and optimal cement placement whilst rotating the liner, significantly improving stand-off of the string. All of these benefits are delivered utilizing simple, reliable and field- proven technology.

Our future technologies

**Harness the power of data
to create a lower carbon future**

Future-facing Technologies

Innovative Solutions Focused On Automation, Digitalization And Energy Transition



Our achievements

Nearing 80 years of success

Safety and service awards



2012	Subsea UK Awards	Outstanding Safety Record
2013	RoSPA	Scotland Trophy Award
2016	RoSPA	President Award
2017	NOIA Awards	Safety in Seas (SIS) Safety Practice Award – JET STRING ELEVATOR™
2017	OH&S Awards	SKYHOOK™ Wireless Cementing Line Make-Up Device
2019	World Oil Awards	Best Health, Safety, Environment / Sustainable Development – JET STRING ELEVATOR™
2020	Hart's E&P	Engineering Innovation (HSE category) – Rack Back Console
2020	World Oil Awards	Best Health, Safety, Environment / Sustainable Development – SKYHOOK™ Wireless Cementing Line Make-Up Device
2020	RoSPA	Scotland Trophy Award
2021	Hart's E&P (HSE)	VIGILANCE™
2022	World Oil Awards	Best Health, Safety, Environment / Sustainable Development – CENTRI-FI™

Technology and innovation awards



2015	Offshore Achievement Awards	Innovator Award – Wireless Well Solutions
2017	Woelfel BMEA Awards	MEGA SPIDER / ELEVATOR
2018	Spotlight on New Technology®	Next Generation Landing String (NGLS)
2019	Hart's E&P	Collar Load Support (CLS™) System
2022	OTC - Spotlight on New Technology®	Galea™ Autonomous Well Intervention System
2022	OWI Awards	Most Innovative Solution - Octopoda™ Annulus Intervention Services

Other awards



2014 Subsea UK Awards

Global Exports

2021 Great Place to Work®

Colombia Certification

2022 OWI Awards

Champion Integrated Well Service Company

Our regions

Asia Pacific (APAC)



Mrinal Vohra,
Vice President

“Safety and quality is at the heart of everything we do. We listen to our customers and deliver bespoke solutions.”

Customer satisfaction rating

95%

Positive Intervention Cards filled out

22,502

Excellence in Operations (EIO) Score

93%

What makes us different?

- We continuously strive to bring new solutions and technology such as Distributed Fibre Optics, Coil Hose and Octopoda to our clients, thereby expanding our service offerings.
- Within Expro our region performs the highest amount of DST & TCP jobs.
- Not only do we provide services in Oil & Gas but also in geothermal renewable energy.
- We are praised by our clients throughout the region for regularly delivering impeccable service quality.
- We tailor solutions for our clients to ensure their objectives and expectations are surpassed.
- Well construction, P&A and riserless subsea well intervention are our key growth segments.
- We recognize that developing our people is fundamental for delivery of our client's objectives; we invest in our people across the value chain in technical and management training.
- We are our client's first choice for services such as deep water subsea landing strings and high flow gas testing solutions. Our delivery and track record speaks for itself.
- We partner with our clients in addressing their problems, in doing so we have gained their respect and become trusted partners.



Operational Areas

Australia, Bangladesh, Brunei, China, India, Indonesia, Japan, Malaysia, Myanmar, New Zealand, Papua New Guinea, Philippines, Singapore, Thailand, Vietnam

Employees

1,495

Countries

15

Clients include

Shell, Inpex, Exxon, Chevron, BSP, ENI, Woodside, Pertamina, ONGC, Total, Petronas, PTTEP, CNOOC, Hess, HOEC, Beach, Mubadala, Santos, Medco, Vedanta, Hibiscus, Japex, CNOOC, COSL and Husky

Europe & Sub Saharan Africa (ESSA)



Iain Farley,
Vice President

“The safety and quality standards of our people enable Expro to deliver the best services taking genuine pride in what we achieve.”

Customer satisfaction rating

94.1%

RoSPA Awards

Order of Distinction for Safety Performance 2022

What makes us different?

- We turn up differently, demonstrating a clear focus on our customers and we are driven to deliver a quality solution.
- We see safety performance at the heart of our success.
- We have a willingness to work with others in a collaborative manner to develop solutions.
- We offer solutions to your challenge, we offer bundled service offerings matching our customer requirements.
- We drive continual improvement throughout our operations.
- We deliver a comprehensive portfolio of products and services.
- We are well established in a broad range of countries where we have developed an extensive track record.
- We introduce new technologies and promote innovation through the organisation.
- We are a citizen of the world- addressing your own, and the industry's effects on the planet to ensure a positive, sustainable impact.



Operational Areas

Angola, Azerbaijan, Cameroon, Chad, Congo, Cyprus, Denmark, Equatorial Guinea, France, Gabon, Germany, Ghana, Israel, Italy, Ivory Coast, Kazakhstan, Kenya, Mauritania, Mozambique, Namibia, Netherlands, Nigeria, Norway, Senegal, South Africa, Tanzania, Turkey, Turkmenistan, UK

Employees

2,166

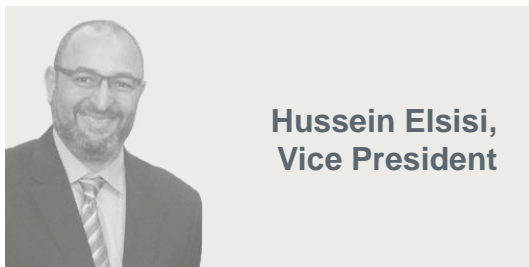
Countries

30

Clients include

BP, CNOOC, ConocoPhillips, Eni, Equinor, ExxonMobil, Harbour Energy, Maersk, Neptune, Perenco, Repsol Sinopec, Total, Tullow, Wintershall, Woodside

Middle East and North Africa (MENA)



Hussein Elsis,
Vice President

“Safety, service quality and motivated workforce have always been the core foundation of our performance. Meeting and exceeding out stakeholders’ expectations are embedded in our DNA”

Production through our packages

**120+ kbopd
435+ mmscfd
150+ mmscfd avoidance**

Customer satisfaction rating

95.1%

Positive Intervention Cards filled out (Q3 2022)

10,960

What makes us different?

- Our safety performance stands out, and our commitment to safety is paramount.
- We embrace partnership with customers through our focus on their challenges and we support them by developing bespoke solutions. We have an appetite to look outside the box for non-core or not in-house services and successfully deliver them. Algeria PS is a sound example.
- We manage high volume low profit business successfully. It is a fine line between making profit and loss.
- We are the pioneer region for Sonar Meters, MPFM, BB and Production Optimisation; offering an array of different unique applications to our customers in production domain.
- Our clients trust us. Our Well Intervention activity in Qatar stands out as we manage high pressure flow rates gas wells.
- Expro MENA has been successful in creating collaborative business with several partners, including some of our major competitors, capitalizing on our technical knowhow and our local market knowledge.
- Our people differentiate us; they passionately deliver our services meeting clients’ job objectives with minimal disruption to their activities. This was evident during COVID era, overstay and committed teams.
- We are the international local provider.



Operational Areas

Algeria, Egypt, Iraq, Jordan, Kurdistan, Kuwait, Lebanon, Libya, Oman, Qatar, Saudi Arabia, Tunisia, UAE

Direct Employees/ including contractors

1,809

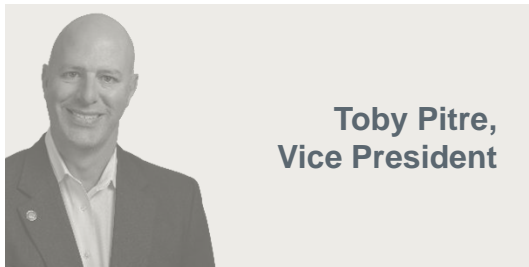
Countries

12

Clients include

Sonatrach, Saudi Aramco, ADNOC, Total, NOC, BP, Apache, Oxy, Eni, Shell, Qarun, Khalda, Bapetco, Agiba, Qatar gas, ARA, SNOC, DP and MOG

North and Latin America (NLA)



Toby Pitre,
Vice President

“We strive to be at the forefront in Quality, Safety, Technology and Teamwork. Our delivery of these qualities drives success to our customers and delivers the results they expect.”

Customer satisfaction rating

96%

RVI free

2 years

Excellence in Operations (EIO) Score

99%

What makes us different?

- Our culture is passionate about safely delivering excellent quality customer service.
- We listen to our customers and build relationships to understand their needs & exceed their expectations.
- Establishing our position as a leading Full-Cycle Energy Service provider, serving our clients with our People, Processes and Technology in the most sustainable, efficient and effective way possible.
- Being active in our communities and ensuring our reputation as a socially responsible employer is always upheld.
- We are forthright in all business interactions and conduct our business with the highest ethical standards



Operational Areas

Argentina, Bolivia, Brazil, Canada, Colombia, Ecuador, Gulf of Mexico, Guyana, Mexico, Suriname, Trinidad, USA, US Land, Venezuela

Employees

2,298

Countries

12

Clients include

Chevron, Conoco, Equinor, Oxy, Shell, BP, Exxon, Kinder Morgan, Enterprise, Energy Transfer, YPF, Petrobras, Perenco, Ecopetrol, Pemex, ENI, Repsol, Halliburton, Baker Hughes and SLB

We are Expro

Where there is a well, there is an Expro way.



Working for our clients across the entire well life cycle, Expro is a visionary full-cycle energy services expert offering novel, insightful solutions, dependable competency and award-winning safety.

Combining innovative, future-facing technology with high-quality data, we have a reputation for extraordinary performance that keeps your operations running smoothly.

Partner with us to help address the critical energy challenges of today and engineer the answers of tomorrow.



EXPRO[®]