



EXPRO

WELL FLOW MANAGEMENT™

Corporate Overview



Expro's mission is **well flow management**.
We provide our customers with the **services, products** and **expertise** they need to **measure, improve, control** and **process flow** from their high-value oil and gas wells.





Our vision

Our vision is to be the market leader in well flow management. We aim to achieve this by employing the industry's best people who are committed to delivering the highest standards of safety, quality and personalised service to our customers every time.

Expro's 40+ years of experience and innovation empowers the company to offer tailor-made solutions for customers across the energy sector. With 4,500 employees operating across all the main hydrocarbon-producing areas of the world, Expro offers a truly global service solution.

From exploration and appraisal through to mature field production optimisation and enhancement, with a specific focus on offshore, deepwater and other technically challenging environments, we provide a range of mission critical services across three key areas:

- **Well Test & Appraisal Services**
- **Subsea, Completion & Intervention Services**
- **Production Services**

Our product lines

- | | |
|--------------------------|---|
| ▪ DST/TCP | ▪ Production |
| ▪ EGIS | ▪ SafeWells™ |
| ▪ Equipment Sales | ▪ Subsea |
| ▪ Fluids | ▪ Well Intervention |
| ▪ Meters | ▪ Well Testing & Commissioning |
| ▪ PowerChokes® | ▪ Wireless Well Solutions |

Our values

Expro promotes three core values within the company
– people, performance and partnerships.

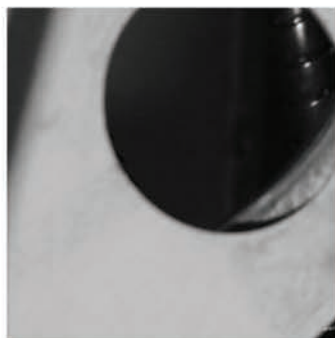
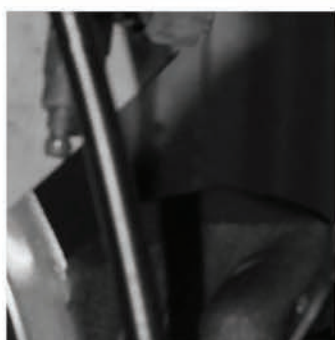
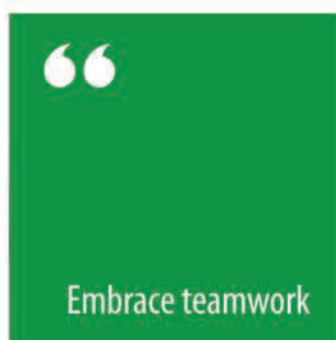
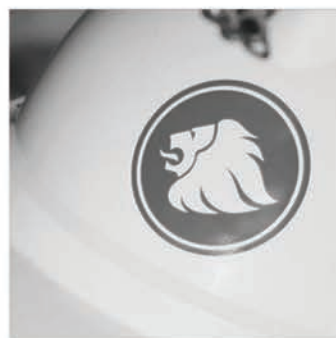
People – are the heart of our success. We recognise the value of our people and are committed to providing the working environment, encouragement and personal development to achieve our goals.

Performance – getting it right first time, every time. We are passionate about safely delivering excellent quality customer service. We embrace teamwork, individually and collectively assuming responsibility for delivering the highest standard of service.

Partnerships – we listen to our customers and build relationships to understand their needs. We innovatively apply, adapt or develop our technologies and services to provide timely and effective solutions.

Our employees have embraced our values, developing seven behaviours that drive the way we work.





Safety

Health and safety is the highest priority in Expro – we are committed to creating a work culture where prevention of harm is a priority for everyone.

We work hard to ensure our people, work methods and technology all help to achieve this aim.

Expro people are personally responsible and accountable for maintaining a safe and healthy workplace by ensuring that all applicable health and safety rules, policies and practices are followed. Everyone in Expro is required to proactively prevent harmful situations, even if this means stopping work to correct an unsafe situation.

Managers are also responsible for ensuring safe systems of work are implemented effectively to ensure harm is prevented. Where managers identify someone not following a safe work method, they will work with them to ensure compliance.

At the root of Expro's approach to achieving world class safety performance and high service quality, are our values – People, Performance and Partnerships. We use this to drive safe working practices across our business and global regions.

Significant safety successes have been achieved by Expro in recent years, demonstrated by the highest level of commitment from our employees, management and Board. By delivering investment through the right people, we continue to deliver, protect and enhance the reputation of Expro and our customers.



Expro has a network of centres of excellence providing knowledge and cost-effective technology development. The largest dedicated centre is in Aberdeen, with a subsea centre in Houston and technology and engineering teams local to our business bases around the world.

The company is dedicated to delivering engineering excellence across the company, ensuring we maintain ourselves at the forefront of technology and innovation.

The team covers all disciplines and elements of the value chain; from technical bid support, new product development, technical support and analysis, project engineering and operations support.

Since establishment in 2004, our Group Engineering function has grown to meet the development demand of existing assets, as well as design and qualification for the next generation of tools. Expro continues to invest a significant proportion of its earnings each year in product development across its range of product lines.

Group Engineering spans several key themes:

- **Advanced finite element analysis and computational fluid dynamics**
- **Process instrumentation, control and software, including wireless communication**
- **Data acquisition, analysis and management**
- **Mechanical engineering, including high pressure / high temperature requirements and advanced seal design**
- **Materials technology, including metallurgy and elastomers**
- **Computer aided design using advanced modeling techniques**

The company also continues to invest in its people, who are at the heart of our development, to provide assurance of capability and build for the necessary skills. This includes the engineering graduate development scheme, which is quickly becoming one of the best in the UK, whilst our apprentice and designer training schemes continue to evolve and develop. These relationships will help Expro to access technology research, as well as provide a talent pipeline, for our future needs within Group Engineering on an international basis.

Well Test & Appraisal Services

Our well test and appraisal services are typically used during the exploration and appraisal testing of a newly discovered reservoir, the clean-up of the well prior to production, or the in-line testing of the well during its production life.

We can provide our well test services on land or offshore, in shallow or deepwater environments - including critical, high-rate, sour or HPHT wells.

As an integrated services provider we offer our customers customised well test packages that include:

- **Surface well testing services**
- **E&A subsea landing strings**
- **Drill Stem Testing (DST) services**
- **Fluid sampling and analysis services**
- **Wireless Well Solutions**
- **PowerChokes® services**

One of our specific areas of expertise is the provision of well test and clean-up services for high flow rate gas condensate wells. We also have an equipment sales business that focuses on the assembly and sale of burner booms and well testing equipment.





150+ well
test
packages

2,000+
well tests

3D
reservoir
modelling

Subsea, Completion & Intervention Services

Expro's subsea, completion and intervention services include the provision of:

- Large bore subsea completion landing strings
- Slickline well intervention services
- Tubing Conveyed Perforating (TCP) services

As the leading provider of largebore subsea completion landing strings, we have a successful track record and technical capability with many of our major IOC customers, who have selected us as their preferred supplier for many critical projects.





10,000 feet
water
depths

1,500
completions

3,000 +
operations

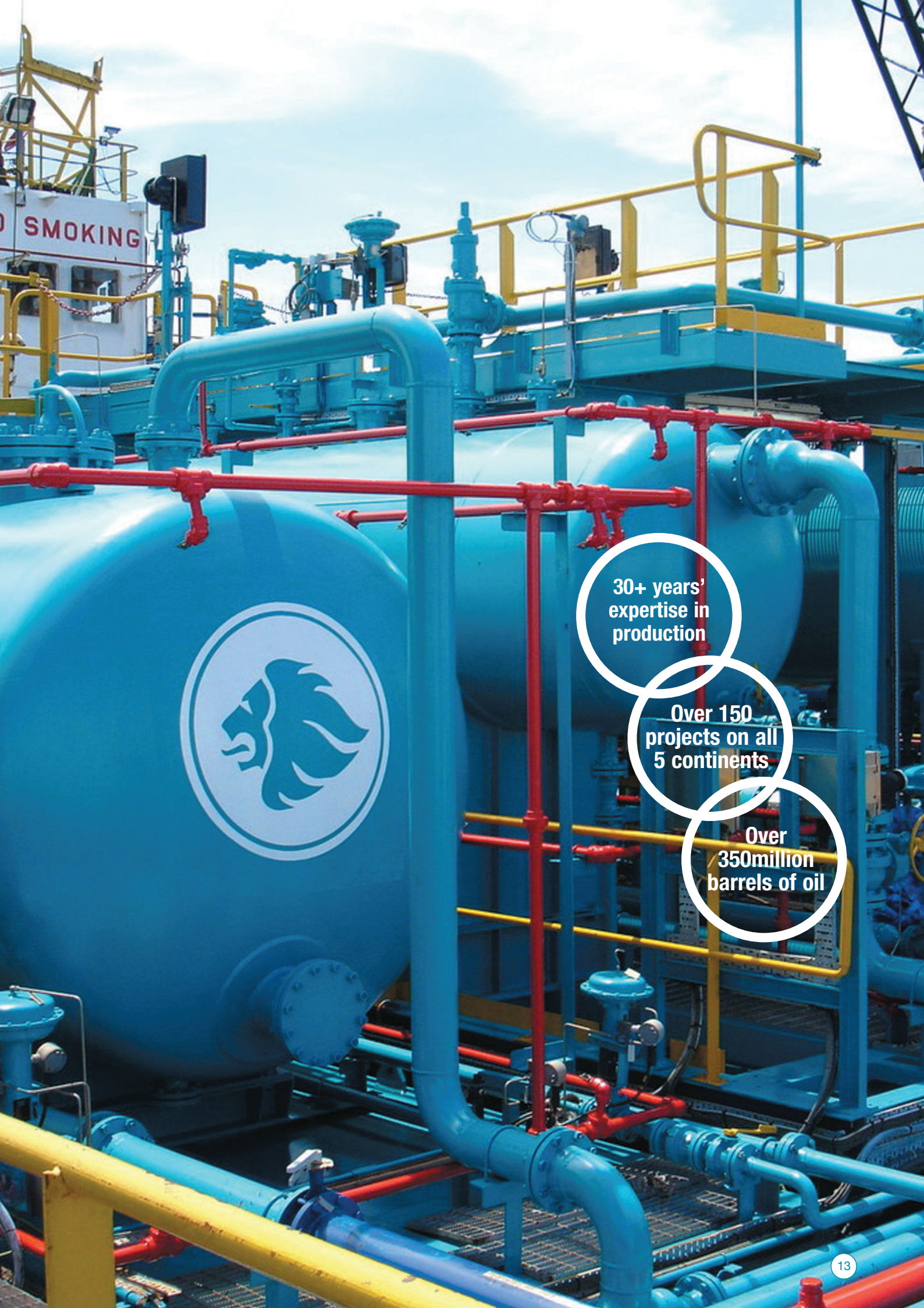
Production Services

Our production services include a range of highly engineered solutions, including:

- Early production
- Production enhancement
- Well surveillance

We provide our customers with a range of production systems and services that have allowed them to accelerate first oil, optimise production from existing fields and enhance production from mature, declining fields. These services include the provision of early production facilities, modular production systems, seawater injection packages, gas compression packages, production enhancement packages and non-intrusive sonar metering well surveillance services.





**30+ years'
expertise in
production**

**Over 150
projects on all
5 continents**

**Over
350million
barrels of oil**

OUR CAPABILITIES

We partner with our customers to deliver a range of fully integrated products and services, which maximise the lifecycle of your assets.



Reservoir Evaluation – improved reservoir understanding

To optimise field development costs and performance, it is essential that a thorough appraisal of the reservoir is conducted. Expro provides a range of specialist services that provide critical information about the reservoir boundaries, permeability, near wellbore completion efficiency and fluid properties.

Subsea Development – efficient subsea completions

Efficient subsea completions are necessary to optimise the performance and cost of a well. Our perforating, well clean-up and subsea safety control systems are specifically designed to minimise risk in completion, intervention and well clean-up operations. This provides a bespoke solution for your well needs, ensuring a rapid response with optimum reliability.

Production Optimisation – enhancing field production

Maximising oil and gas production requires a multifaceted combination of activities, which are often constrained by reservoir characteristics, flow performance, capacity of facilities and integrity of system components. Expro works with you to maximise production from your new and existing fields through a range of monitoring, intervention, data and measurement services, alongside surface and process engineering support.

Well Abandonment – integrated well abandonment services

With over two million wells worldwide there is an ever expanding well stock that requires abandonment. We understand the challenges associated with re-entry and abandonment of an aging well, including the safety, environmental and legislative requirements. Expro has over 20 years' experience in providing temporary and permanent well abandonment solutions, tailor-made to meet your specific well abandonment challenges.

Expro's mission is **well flow management**. We provide services and products that **measure, improve, control** and **process** flow from high-value oil and gas wells, from exploration and appraisal through to mature field production optimisation and enhancement.

With a specific focus on **offshore, deepwater** and other **technically challenging environments**, we provide a range of mission critical services across **three key areas**:

- **Well Test & Appraisal Services**
- **Subsea, Completion & Intervention Services**
- **Production Services**

Our vision is to be the **market leader** in well flow management, using the industry's best people, to deliver the highest standards of **safety, quality** and **personalised customer service**.

Expro's **40+ years** of experience and innovation empowers the company to offer **tailor-made solutions** for customers across the energy sector. With 4,500 employees in over 50 countries, Expro offers a **truly global service solution**.

Contact us:

DST/TCP

Ron Fordyce
ron.fordyce@exprogroup.com

EGIS

Mark Cullen
mark.cullen@exprogroup.com

Fluids

Bill Smith
bill.smith@exprogroup.com

SafeWells™

Simon Copping
simon.copping@exprogroup.com

Production

Richard Barrett
richard.barrett@exprogroup.com

Tony Walker
tony.walker@exprogroup.com

Peter Cook
peter.cook@exprogroup.com

Wireless Well Solutions

Brian Champion
brian.champion@exprogroup.com

Meters

Craig Watterson
Craig.Watterson@exprogroup.com

Well Testing & Commissioning

Gary Peek
welltesting@exprogroup.com

Well Intervention

Dave Bowman
dave.bowman@exprogroup.com

Subsea Safety Systems

Colin Mackenzie
colin.mackenzie@exprogroup.com

Graham Cheyne
graham.cheyne@exprogroup.com

Equipment Sales

John Loafman
john.loafman@exprogroup.com

PowerChokes®

expro.powerchokes@exprogroup.com

Pipeline & Flarestack

pipeline.services@exprogroup.com.

or visit www.exprogroup.com