

**EXPRO**

WELL FLOW MANAGEMENT™

# / Expro Excellence

## Well Intervention

Expro's ViewMax camera used in GOM and gives operator confidence to resume completion operation and saves unnecessary costly operations, despite debris in wellhead



### Objectives

- An operator of a deepwater well (7,000 ft water depth) in the Gulf of Mexico (GOM) experienced a work string failure while milling cement
- Initial thoughts were that they had jumped a box in the work string but attempts to re-stab into the pin were unsuccessful and when the work string was pulled and it was discovered that it had twisted off above the pin leaving fragments in the hole, which were eventually retrieved
- Expro were approached as the operator wanted to confirm the integrity and sealing surfaces of the wellhead/tubing spool and decided a downhole camera should be used for evaluation

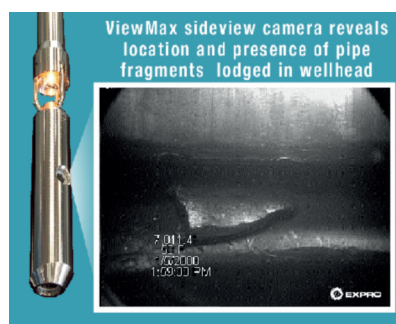
### Expro Excellence

- Expro's ViewMax camera system was mobilised and run in the well
- Flexible solution – can operate on conventional electric line
- The camera inspection revealed two large fragments of the work string lodged in the wellhead (figure one) and as a result special clean-out BHAs and brushes were run to remove the debris

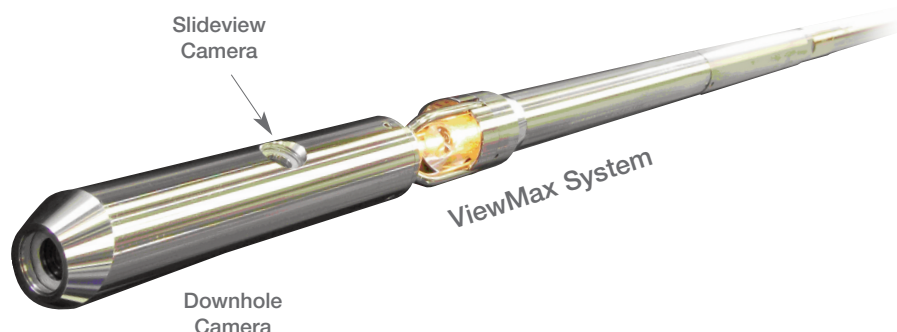
- Camera deployed for a second time to verify the outcome of the brushing operation

### Value to client

- Saved valuable rig time using Expro's ViewMax camera on electric line to inspect the wellhead
- Despite having the debris in the wellhead, using the camera to verify the debris had not moved after thorough brushing gave the operator confidence to proceed knowing it was securely lodged and would not fall down later incurring further costly operations
- Client's confidence also factored into their decision not to pull the tubing spool to retrieve the debris, which would have added approximately \$10 million to the well completion



Expro's ViewMax camera technology has the ability to look down and to the side, rotating 360°, allowing operators to see much more than was possible with only the conventional downwards view camera.



### Contact

For further information, please contact:

**Kevin Illingworth**  
Well Intervention

[kevin.illingworth@exprogroup.com](mailto:kevin.illingworth@exprogroup.com)  
[www.exprogroup.com/wellintervention](http://www.exprogroup.com/wellintervention)

**Expro Excellence**[exprogroup.com](http://exprogroup.com)**Well Intervention**