

Expro Excellence

Expro uses first fishing in LATAM using a stroker - tractor Eline conveyance

Well Intervention



Objectives and background

- A local customer contacted Expro to undertake a fishing operation (in which the toolstring was lost in the hole during a plug and perforation operation), this was due to adverse movements during the operation in the winch
- Expro had an existing relationship with the customer and as a result they were approached to solve this problem in collaboration with a partner company, which ran the well tractor and stroker.

Expro Excellence

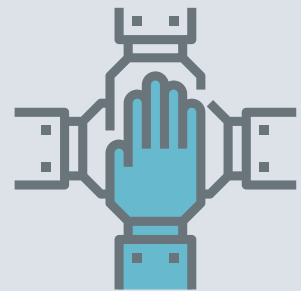
- After pushing the fish and activating the stroker, the fish started to move, it was pushed to 3,493m (90° dev) where the fish would not move any further. After the second attempt, it was pulled out of the hole to see where the fish was cached. No fish was found, so another wheel section was installed
- Before the third attempt to fish, a flush of the well pumping gel (100bbls) and slickwater 300 bbls) at 15bpm was undertaken. The fish was found at 4,177m and the stroker was activated three times
- After pulling out of the hole there was a sign of the fish with an increase in the tension of 2,300lbs. After following the rig down procedure of the guns fished, the complete toolstring was fished successfully
- The complete toolstring was retrieved uphole, with the plug below that was not set downhole. The consequences of leaving the toolstring downhole would have been to push it downhole (or pumped down), but there were 24 stages already performed in the same well, with 23 plugs set

- The toolstring was run to 750m without any restriction. It was run with the stroker, but the tractor was not run, because the first restriction found with the impression block was not found with the toolstring fish. The customer pulled out of the hole and changed the toolstring, allowing it to go deeper to the horizontal section
- The welltractor + wellstroker and fishing overshot worked to push the fish to the horizontal section. Expro took off a section of the wheels to reduce the length of the toolstring, the fish was eventually located at 3,281m (80° dev)

Value to the client

- This was the first fishing operation in LATAM using a stroker-tractor and Eline conveyance
- Saved time of completion for other wells (during coiled tubing operation as the space requirement was smaller than that needed in a wireline rig up)
- Saved time of coiled tubing operation
- Multiple operations performed at the same location
- Non-standard rig up for PCE (length) was utilised

Partnership



Contact

For further information please contact:
wellintervention@exprogroup.com
 or visit
exprogroup.com/wellintervention