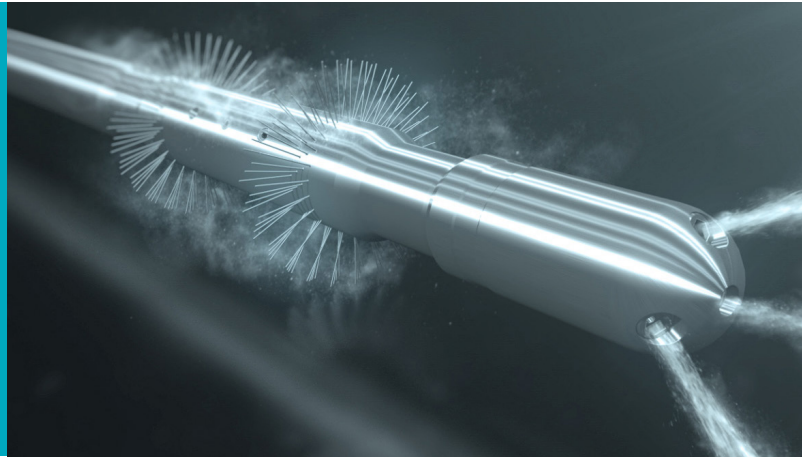


Expro Excellence  
**Expro performs CoilHose well jetting remediation on iSSSV**

**Well Intervention**



**Objectives and background**

- Client had a 2 3/8" injection string tubing retrievable Injection Subsurface Safety Valve (iSSSV) in the stuck open position
- Previous mechanical intervention attempts with conventional brushes and exercise tools were unsuccessful
- A camera run performed identified significant deposits of a heavy grease like substance along the length of the iSSSV which was believed to be preventing the flapper from operating
- CoilHose was selected as the optimum method for jetting and fluid circulation in order to reinstate the integrity of the iSSSV
- Contingency operations involved further mechanical intervention to lock out the iSSSV and set an insert valve

**Value to the client**

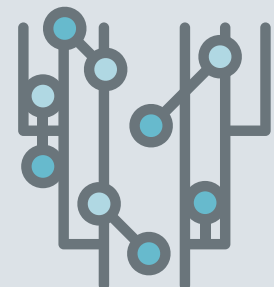
- All programme objectives were achieved and integrity restored to the iSSSV
- Ability to maintain maximum thru bore of 2 3/8" tubing string without the need to lockout iSSSV and set insert valve
- Safeguarding of future production from the well
- Two runs performed that included five 'jetting passes' with no miss runs
- Minimal footprint and rig up time versus conventional coil tubing allowed ensured increased operational efficiency



**Expro Excellence**

- Bespoke engineered solution deploying the latest Expro technology
- A collaborative approach to developing the well programme with the customer
- Pre-mobilisation SIT ensured confidence in the effectiveness of the proposed jetting solution
- Multi-disciplined crew received commendation for contribution to the platform safety processes

**Well integrity restored**



**Contact**

For further information please contact:  
[wellintervention@exprogroup.com](mailto:wellintervention@exprogroup.com)  
 or visit  
[exprogroup.com/wellintervention](http://exprogroup.com/wellintervention)