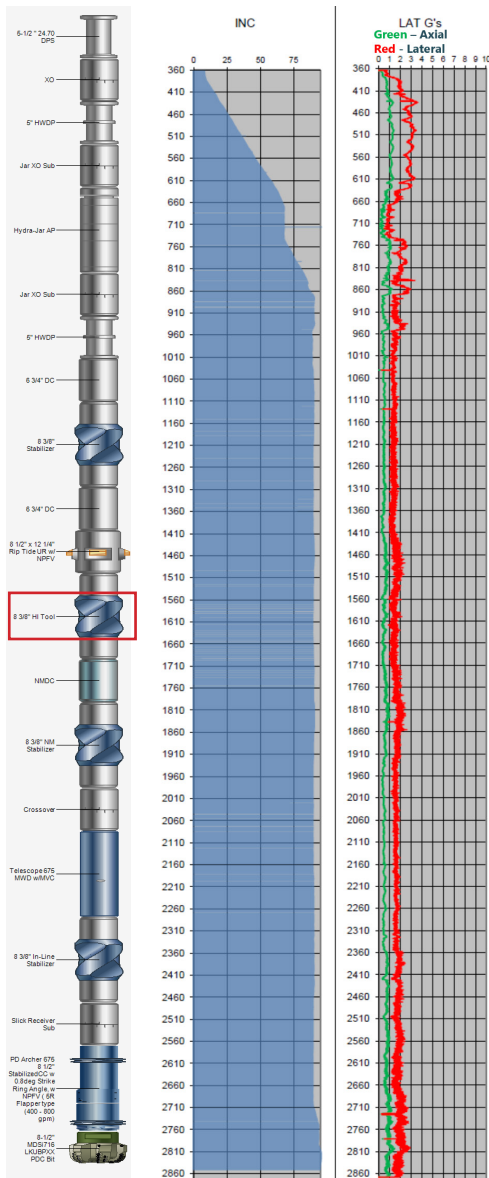
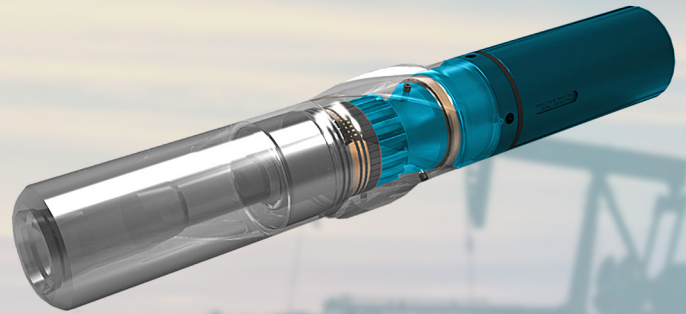


Expro Excellence

Vermilion Energy drills 8.5" & opens to 12.25" in a single run using Harmonic Isolation Tool (HI tool)

Well Construction | Drilling Technologies



Expro Excellence

- Series 800 (8 3/8" sleeve) Harmonic Isolation Tool contributes to Vermilion world record run on NWS Australia
- Total section length 2,490m
- Hole opened from 8.5" to 12.25" in a single run
- Built angle from 8° to 90° over 500m MD
- Turned from 45° to 49° (364° change)
- Drilled 2,000m horizontal section
- Minimum axial and lateral shocks
- HI tool also used in the 8.5" x 9.25" horizontal section and 8.5" x 9" horizontal on B16ST2

Value to the client

- Address predominantly Lateral and Axial vibration modes
- Maintains wellbore at nominal gauge
- Reduces damage to FE tools
- Aids bit self centering during bit whirl and reduces bit damage and expensive trips
- Reduces hole spiraling and improves weight transfer to the bit
- By stabilizing the BHA negates the need to reduce RPM or increase WOB as a mitigation technique

