



EXPRO

WELL FLOW MANAGEMENT™

/ Expro Excellence Meters

Wellhead production surveillance for
North Sea HPHT gas condensate field



Objectives/background

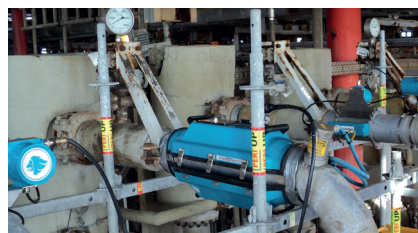
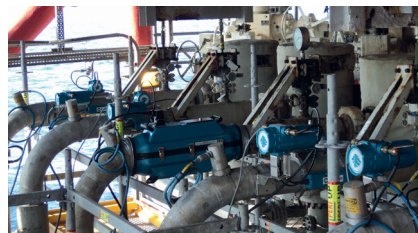
- A North Sea operator approached Expro with an interest in retrofitting non-intrusive sonar meters for their HPHT gas condensate field, the production platform is normally unmanned (NUI)
- Existing individual wellhead multiphase flow meters were now out of range due to the facility coming off plateau production
- A cost effective method of monitoring individual well performance, capable of being installed with minimal disruption to on-going production was required
- A normally unmanned facility, sonar metering was required to interface with existing data acquisition and telemetry systems to make the data available at the host facility and the client office onshore

Expro Excellence

- Expro conducted a trial campaign to pre-qualify the sonar technology, to ensure the wells fell within the operating range of the sonar meter – this gave the client first-hand experience of the technology under actual flowing conditions
- The demonstration was undertaken with no disruption to production due to the clamp-on design
- ActiveSONAR™ flow meters were installed on the 6" flow lines downstream of the production choke and upstream of the existing inline multiphase meters

Value to client

- The operator was able to continuously and remotely monitor well behaviours and production trending, to validate and create well profiles to optimise well cycling programmes
- Gathering real-time flow rates from the sonar meters via their performance indicator system has allowed the operator to create and maintain baseline production rates for each well
- Retrofitted non-intrusive installation
- Ability to fully comply with internal surveillance requirement: Well Reliability Optimisation (WRO) Standard
- Eliminates the need for testing by difference, avoiding sequentially shutting in the wells - well testing on demand, without well shut ins
- Ongoing reduced personnel on board requirement



Contact

For further information, please visit:

www.exprogroup.com/meters

or call +1 203 303 5686



Expro Excellence

exprogroup.com

Meters