



EXPRO

WELL FLOW MANAGEMENT™

/ Expro Excellence DST

Expro deploys first *EXACT™* tool in UKCS



Objectives/background

- Expro was contracted to deliver drill stem testing (DST) services to facilitate an extended flow and pressure build-ups to determine the commercial viability of a well in deep water in the north-west of Shetland

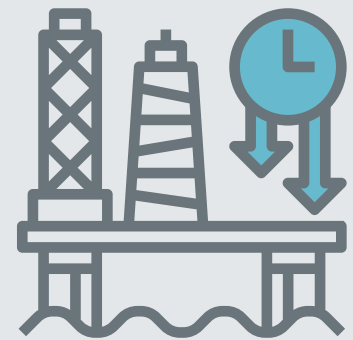
Expro Excellence

- First deployment of Expro's *EXACT™* tool in UK waters
- Expro's *EXACT™* tool is a fast-acting multi-cycle combined tester and circulating valve, which allowed the well to be flowed and shut in as required; also allowing the displacement of nitrogen; hence allowing the well to flow naturally
- Expro provided a suite of direct annulus-pressure operated DST tools, which were required to function in unusually long annulus pressure bleed-downs, designed to protect ESP systems from explosive decompression damage
- Expro provided specialised technical support to the customer throughout the project, overcoming challenging interfaces with other contractors' downhole equipment, ensuring string and well integrity, and flow assurance

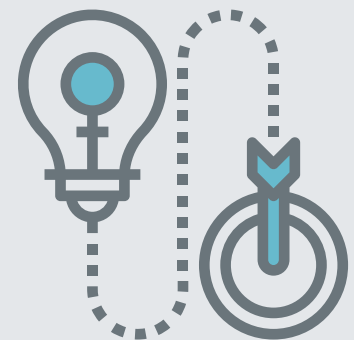
Value to client

- Functionality and reliability of the DST tools over an extended period in the well (over 30 days) ensured the customer received meaningful well test information with no attributable non-productive time (NPT)
- A full set of pressure/temperature data from all downhole memory gauges enabled the client to fully analyse the well test and make informed field development decisions

Reduction of rig time



Innovative solution



Contact

For further information, please contact:
dst-tcp@exprogroup.com

Or visit:

www.exprogroup.com/dst-tcp



Expro Excellence

exprogroup.com

DST