

Expro Excellence

Expro's ArticuLock® enables safe suspension of tubulars during rig transit

Well Construction | Tubular Running Services



Objectives and background

- The client was sailing the rig with 36" x 30" conductor string suspended beneath with a limited weather window, requiring a tool to stabilize the conductor string



Expro Excellence

- ArticuLock® was used to de-couple the fixed MODU from the hanging conductor, enabling moving the rig up to 4.5m Hs

Value to the client

- The 100MT conductor was suspended beneath ArticuLock® for 34hrs during rig transit at up to 1.5 knots
- An allowable weather window for sailing the rig with conductor suspended underneath ArticuLock® successfully opened up to 4.5m Hs wave height
- Removed the risk of harsh weather impacting rig move

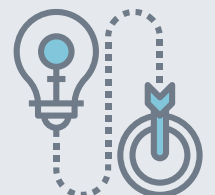
Safety



Reduction of rig time



Innovative solution



Contact

For further information please contact:
wellconstruction@expro.com
or visit
expro.com | Tubular Running Services