

Expro Excellence Expro's ArticuLock® enables lowest risk dual drilling solution

Well Construction | Tubular Running Services



Objectives and background

- Dual Drilling operations on main and auxiliary with conductor suspended on moonpool XT trolley exposes risk and limited weather window



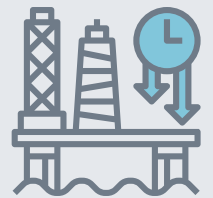
Expro Excellence

- Expro's ArticuLock® used to de-couple the fixed MODU from the suspended conductor, enabling safe dual drilling operations in extreme weather conditions

Value to the client

- 50MT conductor safely suspended for 12 - 23 hours in 4-5m Hs sea state
- Dual drilling operations for pilot hole executed concurrently with conductor ready to run hung on XT moonpool trolley
- In a shallow hazard scenario materialising rig move off location is made safe at high speed
- Capability to save up to 6hrs from top hole operations
- We provided potential savings of up to 40MT CO₂ from top hole operations

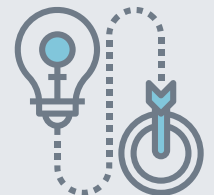
Reduction of rig time



Safety



Innovative solution



Contact

For further information please contact:
wellconstruction@expro.com
or visit
expro.com | Tubular Running Services