

# Expro Excellence SeaCure<sup>®</sup>, QuikCure<sup>®</sup> & CoreCure<sup>®</sup> delivering high value cementing on riserless cementing operations

## Well Construction | Cementing Technologies



### Objectives and background

- Our client's previous cementing strategy resulted in WOC on conductor and time spent drilling out conventional shoetracks on the 16" section. The client also required a clean out run if opting to drill a pilot hole out of the 16" shoe

### Expro Excellence

- Expro's SeaCure<sup>®</sup> delivered a quality cement job with the added benefit of rapid cement hydration technology, QuikCure<sup>®</sup> reducing WOC on the conductor to four hours. The zero shoetrack solution also allowed for a simple and reliable drill out

### Value to the client

- Reduced conductor WOC time to four hours, with downhole temperature logger showing cement going through hydration process after just two hours
- 1,200psi (83bar) surface casing pressure test carried out on green cement
- Surface casing cement job displacement volume reduced to 29bbbls (~5m<sup>3</sup>) due to stabbed in inner string conduit
- Simple and reliable drill out of both the 24" and 16" shoes
- CoreCure<sup>®</sup> downhole cement sample confirming hard, good quality cement at the shoe

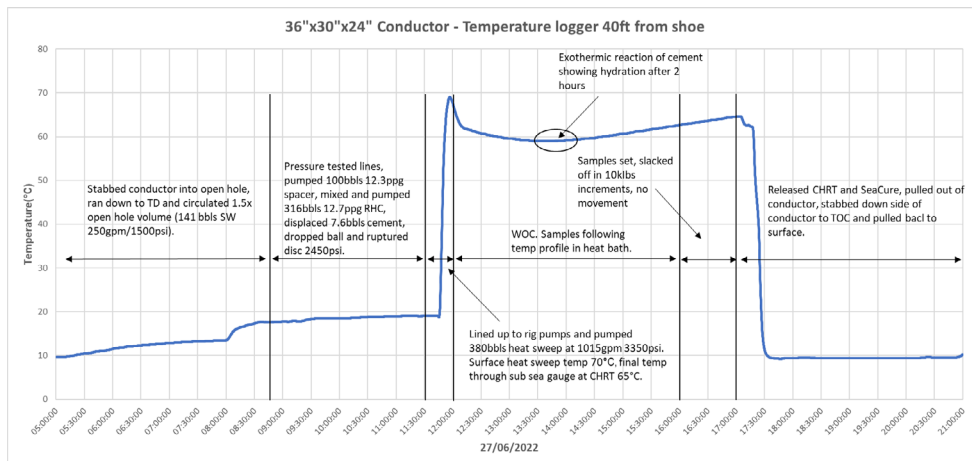
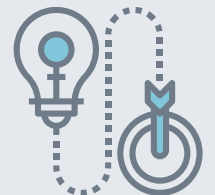
Quality standard



Cost saving



Innovative solution



### Contact

For further information please contact:  
[cementing@expro.com](mailto:cementing@expro.com)  
or visit  
[expro.com](http://expro.com) | Cementing technologies