



EXPRO

WELL FLOW MANAGEMENT™

Meters

Surveillance on demand



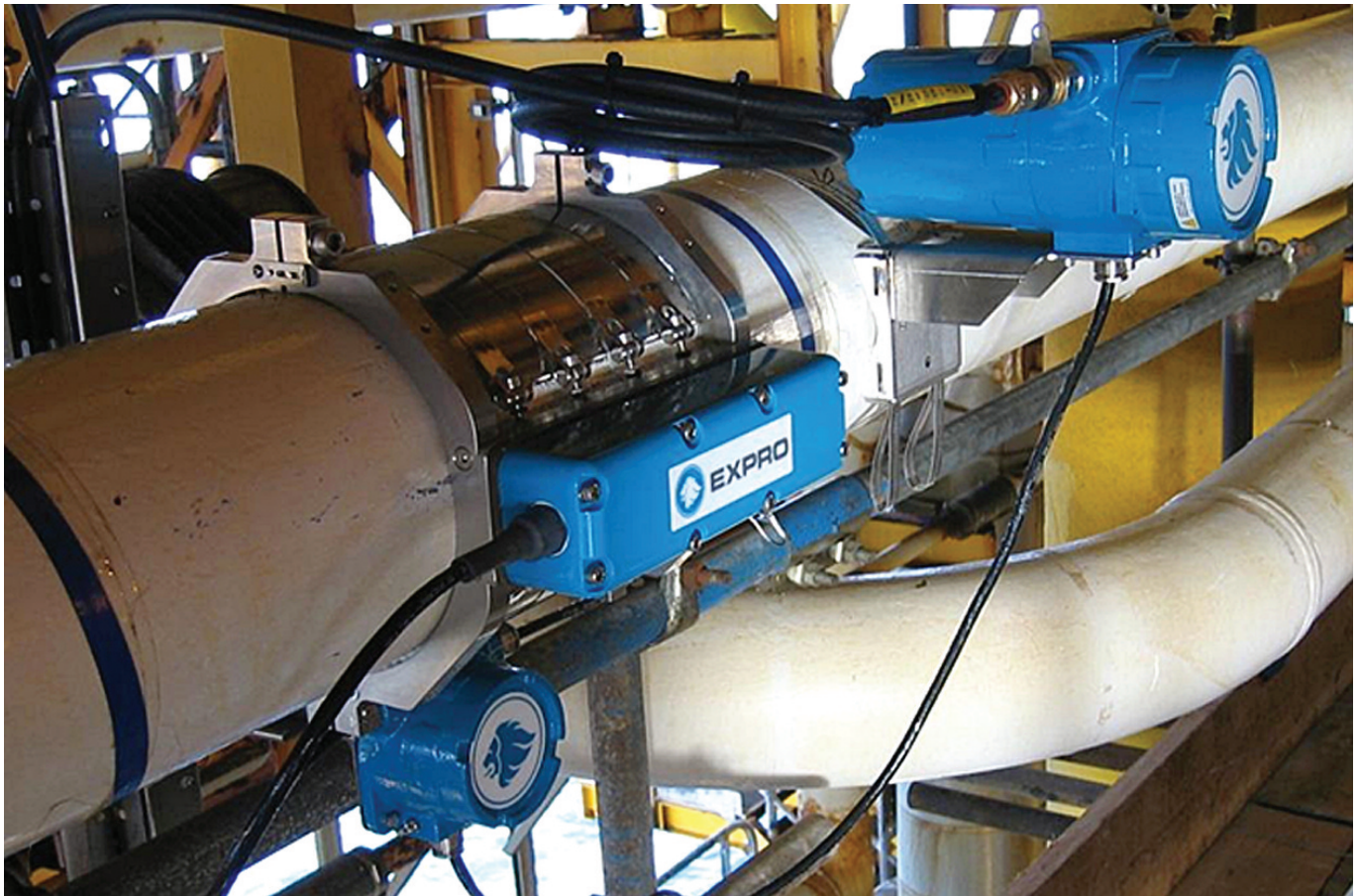
Innovative **metering technology**



Clamp-on wellhead surveillance



Expro Meters offers on-demand wellhead surveillance services, which are both cost-effective and non-intrusive. We provide insight into individual well performance, helping our customers to improve well efficiency and overall reservoir production.



We utilise clamp-on sonar-based meters and innovative multiphase flow interpretation techniques to provide accurate and reliable flow measurement with no process interruption.

Our lightweight meters can be hand carried onto a helicopter and easily installed by one man.

For real-time 24/7 surveillance, our clamp-on sonar flow meters provide a cost-effective solution for permanent wellhead monitoring. Benefits of permanently installed Expro Meters flow surveillance products include:

- Completely non-intrusive
- Installation without process shutdown
- Low cost to install, operate and maintain
- Very wide turndown ratio compared to all other flow meters

For periodic surveillance of well production, Expro Meters offers portable well testing services, utilising our clamp-on sonar-based flow instrumentation designed specifically for wellhead measurement.

The benefits include:

- Rapid response around the world
- Zero impact with no process or flow disruption
- Two weeks from call-off to final report
- Full integration with Expro's global capability

Real-time 24/7 wellhead surveillance

Expro Meters offers permanent wellhead measurement through our clamp-on meters. The nature of the meters means they are non-intrusive, leading to quick and easy installation with no pressure loss or potential leak paths. One of the benefits over traditional clamp-on meters is that we can measure both liquid-in-gas and gas-in-liquid flow. The meters are installed in less than one day with no process shutdown.



This means that we provide our customers with:

- The data they need at their fingertips
- Full visibility of what their wells are doing and what they have done (data history and trends)
- Increased production and enhanced recovery through optimisation and intervention
- Very wide turndown ratio, meaning you only need one meter for the life of the well

Zero-impact portable well-testing



Our clamp-on sonar-based flow measurement technology is integrated with Expro's capabilities and offers the most versatile clamp-on wellhead surveillance available. We also guarantee that it will never be more than two weeks from call off to your final report.



This means that our customers are provided with:

- A high level of customer service and our rapid mobilisation wherever they are
- One man, one well, one day, anywhere in the world
- Better visibility of well activity, providing accurate and real time data

Downstream applications

The same attributes that make our sonar meters attractive at the wellhead make them ideally suited for other applications, such as tanker loading, brine storage and pipeline and flarestack monitoring.

Our sonar meters are ideally suited for:

- Large diameter pipes
- Corrosive or abrasive fluids
- Thick wall piping and heavy schedule



Our sonar-based flow measurement technology

We continue to invest in the development of our metering technology and software to meet the needs of our customers.

The combination of ActiveSONAR™ and PassiveSONAR™ technologies enables Expro Meters to provide clamp-on multiphase surveillance specifically designed to address a broad range of wellhead production and injection surveillance applications.



PassiveSONAR is the technology that pioneered clamp-on multiphase metering. It uses passive listening technology to determine volumetric flow rate. PassiveSONAR is well-suited for high rates and high liquid loadings.



ActiveSONAR is the next generation of clamp-on sonar technology. ActiveSONAR uses pulsed-array sensors to track the speed of coherent flow structures. The pulse array technology provides enhanced signal to noise ratio and is well suited for high and low rate applications.

Expro's mission is **well flow management**. We provide services and products that **measure, improve, control** and **process** flow from high-value oil and gas wells, from exploration and appraisal through to mature field production optimisation and enhancement.

With a specific focus on **offshore, deepwater** and other **technically challenging environments**, we provide a range of mission critical services across **three key areas**:

- **Well Test & Appraisal Services**
- **Subsea, Completion & Intervention Services**
- **Production Services**

Our vision is to be the **market leader** in well flow management, using the industry's best people, to deliver the highest standards of **safety, quality** and **personalised customer service**.

Expro's **40+ years** of experience and innovation empowers the company to offer **tailor-made solutions** for customers across the energy sector. With 4,500 employees in over 50 countries, Expro offers a **truly global service solution**.



For more information contact:

meters@exprogroup.com

Or visit **www.exprogroup.com/contact**

Expro Meters Headquarters:

50 Barnes Park North

Wallingford

Connecticut

USA

06492

Tel: + 1 203 303 5695