



**EXPRO**

# WELL FLOW OPTIMISATION



For clients working across the entire well life cycle, Expro is the well flow optimisation expert.

Combining innovative disruptive technology with high quality data across well flow management, subsea well access, well intervention and production solutions, delivering a service that's not just state of the art but highly accurate.

We're open, transparent and honest, allowing us to have a shared mutual confidence and understanding with clients, giving you flexible and creative answers to problems. We are a business that thinks ahead. We're bold. And we're direct. It's this way of working that helps you address the critical energy challenges of today, and engineer the answers of tomorrow.

# OUR VISION



With a well equipped, well motivated workforce, we will continue to be recognised for extraordinary performance, safety and long-standing partnerships. Expro will shape, position and strive ahead as a forward-thinking brand, confident and clear about what it does and doesn't do. To this end, we shall create a unique customer experience by always being forthright, determined and selective.

Our brave and definitive way of working, shall help demonstrate what makes us visible, distinctive and highly relevant in the industry, using our quick thinking and straight talking approach to create value for our customers, employees and investors alike.

Our determined commitment to product portfolio enhancement, increasing sophistication in technology and the application of resources and IP development will ensure that Expro goes

beyond merely meeting customer needs, but addressing our impact on the future. We will focus on developing initiatives to both harness the power of data within our business practices and also increase our relevance and commitment to creating a lower carbon future.

We're confident this approach, bolstered by a discerning focus, will attract business from new markets and enhance existing business in the years ahead. This will also attract and retain talent and we will ensure it is always nurtured to obtain the right answers for our clients.

We will move forward, continuously ensuring everything we do is delivered by a diverse, unified team, whose skills are constantly evolving with the industry. In short, Expro will always put the right people forward to do the right work for the right customers in the right places, assuring its place in the industry.

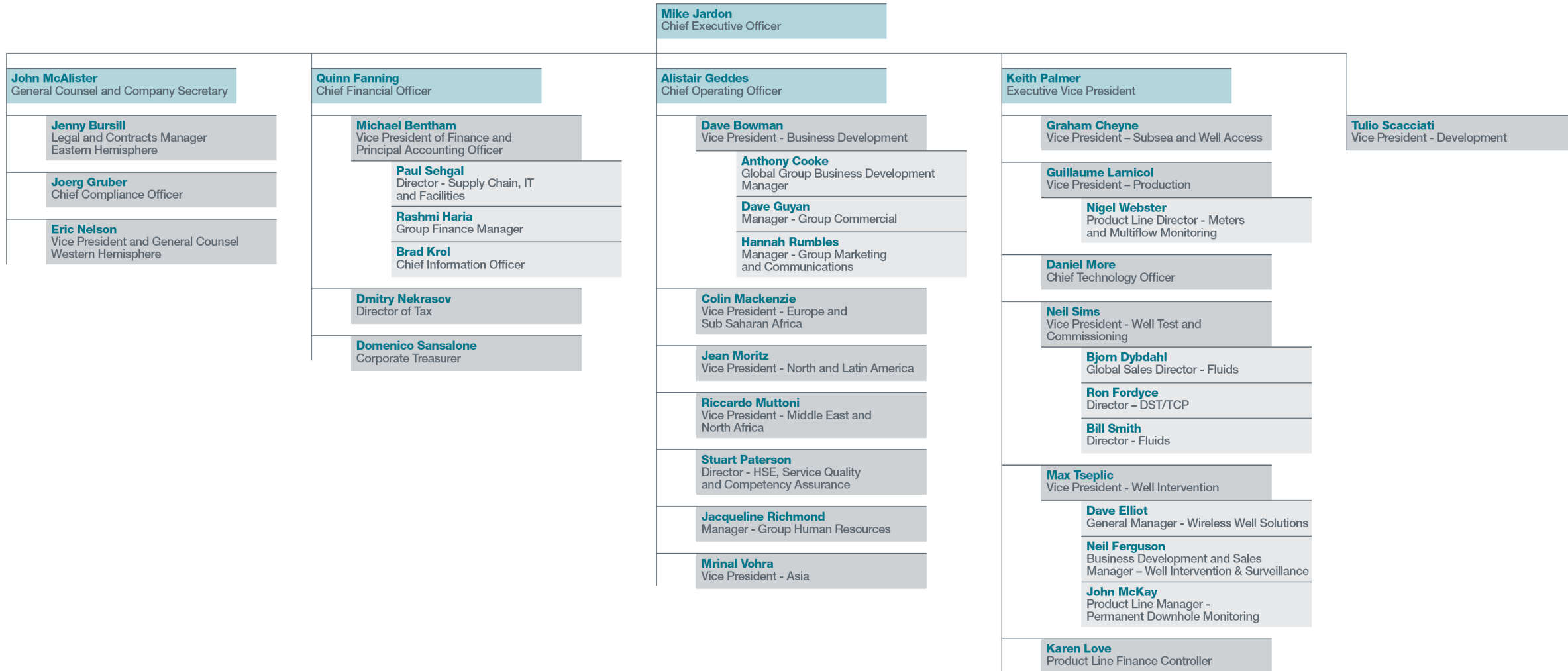
## Company highlights

# 50 years of market leadership

1. **Leading well flow optimisation expert** with an outstanding reputation for technology driven-solutions, service quality and HSE
2. **Broad portfolio of products and services** providing cost-effective solutions to enhance production and improve recovery across the well life cycle
3. **Global operating footprint** with scale / scalable presence in key markets
4. **Attractive growth opportunities**, focused on leveraging relationships with NOC / IOC customers and life-of-field capabilities
5. **Strong financial profile** with no debt and ample available liquidity; multi-year, progressive re-balancing of portfolio enhances through-cycle resiliency
6. **Attractive cash flow and profitability outlook**



# Senior management team



# OUR MISSION



**To know everything about  
your subject is excellent.  
To take genuine pride in  
everything is Expro.**

# OUR VALUES



---

**People** – are at the heart of our success. We recognise the value of our people and are committed to providing the working environment, encouragement and personal development to achieve our goals

**Partnerships** – getting it right first time, every time. We are passionate about safely delivering excellent quality customer service. We embrace teamwork, individually and collectively assuming responsibility for delivering the highest standard of service

**Performance** – we listen to our customers and build relationships to understand their needs. We innovatively apply, adapt or develop our technologies and services to provide timely and effective solutions

# OUR BEHAVIOURS



## Champion safety

We strive to be at the forefront of safety, in everything we do

## Embrace teamwork

We work together to deliver an excellent service – we coach and learn from others

## Be accountable

We take responsibility and pride in our actions

## Partner customers

We build and sustain high value partnerships with our customers and colleagues

## Seek innovation

We inspire and innovate to seek out solutions for every challenge

## Communicate effectively

Effective communication is key. We share information and respect everyone we work with

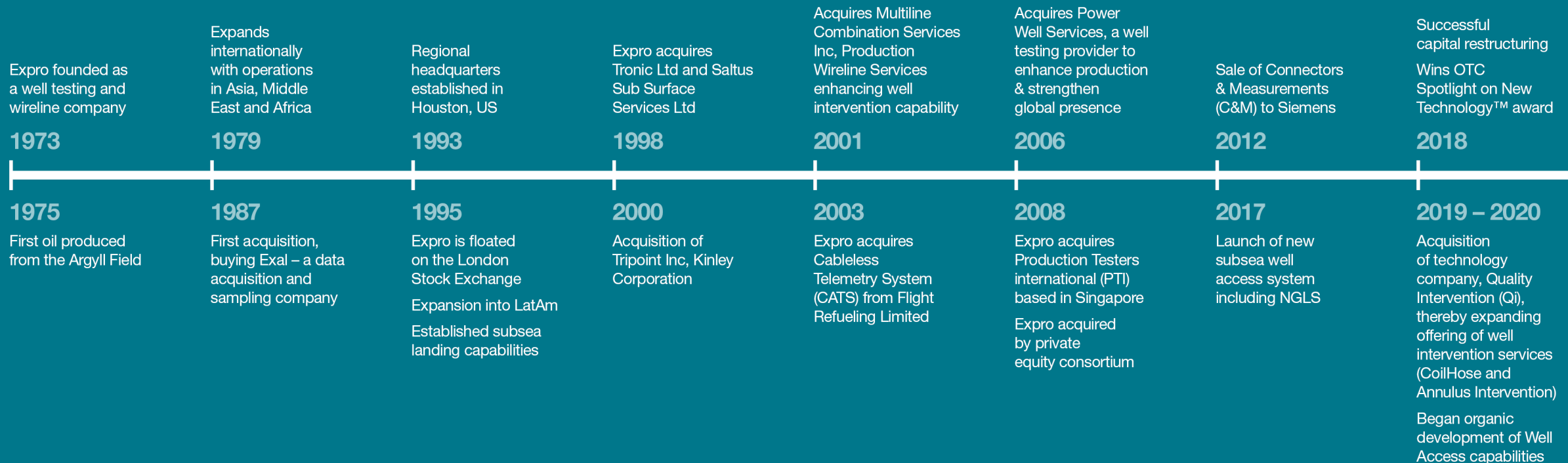
## Deliver quality

We focus on delivering operational excellence to all our stakeholders



# Nearing 50 years of market leadership

Started in the United Kingdom in 1973 and helped produce the first UK oil from the Argyll Field on June 11, 1975. In the ensuing 45+ years, our well flow optimisation services have expanded globally.

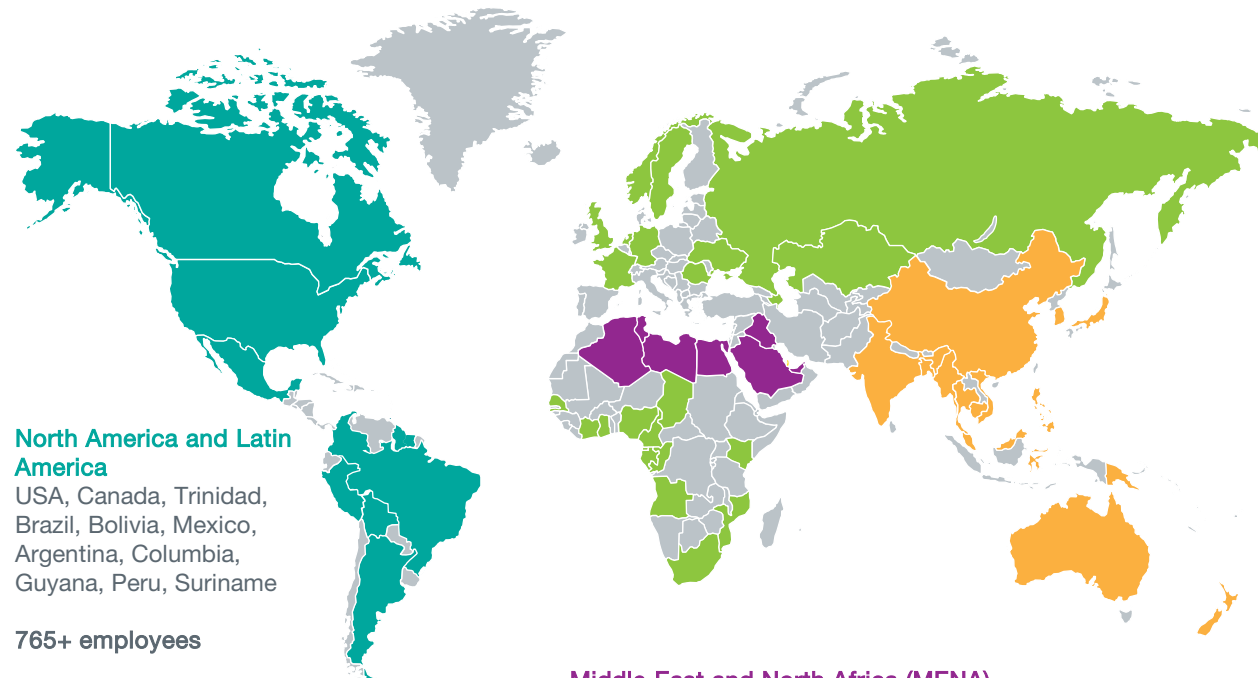


# Extensive global reach

Expro employs over 4,100 people in 50 countries, offering a truly global service solution

Operating headquarters are in the UK

Regional headquarters are in Aberdeen, Dubai, Houston and Kuala Lumpur



**North America and Latin America**

USA, Canada, Trinidad, Brazil, Bolivia, Mexico, Argentina, Columbia, Guyana, Peru, Suriname

765+ employees

**Middle East and North Africa (MENA)**

Algeria, Saudi Arabia, Egypt, UAE, Qatar, Iraq, Libya, Tunisia

930+ employees

**Europe & Sub Saharan Africa (ESSA)**

UK, Kazakhstan, Norway, Netherlands, Azerbaijan, Russia, France, Germany, Romania, Sweden, Italy, Ukraine, Ghana, Gabon, Angola, Nigeria, Congo, South Africa, Cameroon, Mozambique, Kenya, Ivory Coast, Chad, Equatorial Guinea, Senegal

1,510+ employees

**Asia**

Australia, New Zealand, Brunei, China, India, Indonesia, Malaysia, Philippines, PNG, Thailand, Vietnam, Cambodia, Vietnam, Japan, Korea, Bangladesh, Myanmar

885+ employees

# HSEQ performance

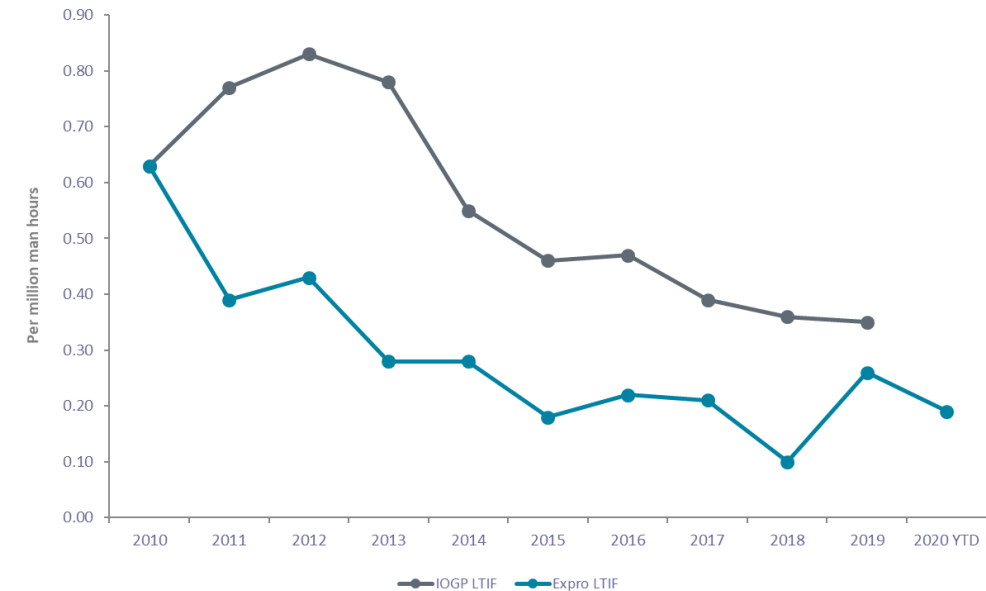


**We strive to be at the forefront of safety, in everything we do.**

Champion safety

- Customers value the reliability, quality and safety of Expro's services
- Established reputation for delivering operational and technical excellence that exceeds customer expectations and underpins Expro's brand
- Executive leadership, managers and employees are committed to delivering the highest standards of safety performance
- Recognised for 16 consecutive years by the Royal Society for the Prevention of Accidents (RoSPA) for health and safety performance (2019 Scotland Trophy recipient and Order of Distinction for 16 consecutive gold awards)
- Industry certified: API Q2, ISO 9001:2015 quality management system, ISO 14001:2015 environmental management, ISO 45001 occupational health and safety

Lost Time Injury Frequency (LTIF) (million man hours basis)



# Safety global track record



**Safety is paramount in our organisation. We pride ourselves on having a strong safety culture and we always encourage our employees to champion safety at every opportunity while we work.**



Mike Jardon,  
Chief Executive Officer

## North America

Canada  
**11 years LTI free**

North America  
**3 years LTI free**

Alaska  
**3 years LTI free**

Gulf of Mexico  
**6 years LTI free**

Trinidad  
**21 years LTI free**

## Latin America

Latin America  
**3 years LTI free**

Argentina  
**13 years LTI free**

Mexico  
**19 years LTI free**

## Europe & SSA

FAC, Reading  
**21 years LTI free**

Kazakhstan  
**9 years LTI free**

UK  
**5 years LTI free**

Norway  
**11 years LTI free**

SSA  
**4 years LTI free**

Angola  
**6 years LTI free**

Congo  
**21 years LTI free**

Ivory Coast  
**17 years LTI free**

## MENA

Qatar  
**5 years LTI free**

## Asia

Asia  
**12 years LTI free**

India  
**21 years LTI free**

Thailand  
**12 years LTI free**

Malaysia  
**22 years LTI free**

Australia  
**14 years LTI free**

# Service quality



**We provide innovative and bespoke solutions to overcome our customers challenges. We are responsive and agile. Our services are underpinned by our culture of exemplary safety performance and overall operational excellence.**



Alistair Geddes,  
Chief Operating Officer



Your crews have the best reputation for safety, proper documentation, cleanliness and professionalism on the job site.

It is a comfort to know that when your crew is on site with us, the focus is to do the job safe and for everyone go home in the same condition as when they got there.



I would like to thank everyone very much for the continuous support and the excellent work done during all the stages of completion.

All of you involved in this project can be proud to have participated in that pioneering adventure in the Argentine shale.



I just wanted to take a moment to thank you and your crews for the exceptional work that Expro has provided.

I have never worked with a group of guys that were always on point, day in and day out. Your crews are easily some of the best I have had the pleasure of working with over my 25+ years in this industry.



The Expro work ethic was infectious, prompting other teams to step their game up.

The Expro team dedicated to the project is, in my opinion, a world class, quality orientated, performance driven and HSE minded group. I will be proud to work with them again.



**We focus on delivering operational excellence to all our stakeholders.**

Deliver quality

**Overall Expro is performing over 5% better than the industry average**

**We met the highest scores over the industry for both trust and engagement**

# Preserving our planet

Enhance today.  
Maximise efficiency.  
Transform tomorrow.

The planet is important to us.

We want to be more relevant in today's world. We must reduce our own environmental impact. Our industry is part of the solution to address a lower carbon future – and we are committed to playing our part.

We are advancing and developing technologies to achieve this and participate in maximising recovery. Our focus and commitment on innovation, efficiency, and digitalisation better informs our customers, enables operational excellence and facilitates more timely and informed decisions.

Ultimately making an impact on the future of each and every one of us.



# Technology and innovation

Inspire | Create | Differentiate



**Culture of innovation**  
Inspire. Create.  
Differentiate.



Our determined commitment to product portfolio enhancement, increasing sophistication in technology and the application of resources and IP development will ensure that Expro goes beyond merely meeting customer needs, but addressing our impact on the future.

We will focus on developing initiatives to both harness the power of data within our business practices and also increase our relevance and commitment to creating a lower carbon future.



Daniel More  
Chief Technology Officer

## What we are doing

- **Digital transformation:** Evolving our digital initiative to unleash the power of data within our business practices to create a unique customer experience
- **Partnership:** We continue to build and sustain high value partnerships to support the unique customer experience we create
- **Planet:** We are advancing and developing technologies to help create a lower carbon future and participate in maximising recover
- **Intelligent automation:** We are looking at ways to increase accuracy and uptime, improving safety, reducing costs and personnel on board



# What we do.



# Our methodology

Access. Optimise. Assure.

|           | Subsea Well Access |      |     |                   | Well Flow Management |     |     |        |                         | Well Intervention and Integrity |                         |                |        |     |          | Production Solutions |                  |                           |                     |                   |                            |                 |        |            |   |
|-----------|--------------------|------|-----|-------------------|----------------------|-----|-----|--------|-------------------------|---------------------------------|-------------------------|----------------|--------|-----|----------|----------------------|------------------|---------------------------|---------------------|-------------------|----------------------------|-----------------|--------|------------|---|
|           | SSTTA              | RWIS | IRS | System Integrator | Well test            | DST | TCP | Fluids | Pipeline and Flarestack | Mechanical Wireline             | Cased Hole Applications | Wireless Wells | Galea™ | PDM | CoilHose | Octopoda™            | Early production | Offshore Production Units | Enhancement Systems | Facility Upgrades | Operations and Maintenance | Water treatment | Meters | SafeWells™ |   |
| ACCESS    | X                  | X    | X   | X                 | X                    | X   |     | X      |                         | X                               | X                       | X              | X      |     |          |                      | X                |                           |                     |                   |                            |                 |        |            |   |
| OPTIMISE  | X                  | X    | X   |                   | X                    | X   | X   | X      |                         | X                               | X                       | X              | X      | X   | X        | X                    | X                | X                         | X                   | X                 |                            |                 | X      | X          | X |
| ASSURE    | X                  | X    | X   | X                 | X                    | X   |     | X      | X                       | X                               | X                       | X              | X      | X   | X        | X                    |                  |                           | X                   | X                 | X                          | X               | X      | X          | X |
| TRANSFORM |                    |      |     |                   | X                    |     |     |        |                         |                                 | X                       | X              | X      | X   | X        |                      |                  |                           |                     |                   |                            |                 |        | X          | X |

We are the well flow optimisation expert, who will safely access, optimise flow, capture data and provide integrity and assurance across the lifecycle of your well.

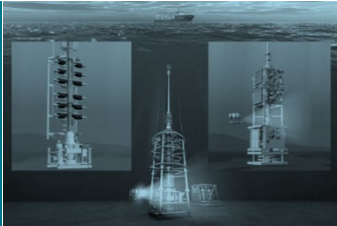
Whether working for customers, the company or with colleagues, we are open, transparent and honest, allowing us to have shared mutual confidence and understanding, giving you flexible and creative answers to problems. We engineer the answers of tomorrow.

# Portfolio services across the lifecycle

## A balanced portfolio

### Subsea Well Access


Ensuring safe well access and optimised production



- Subsea Test Tree Assembly
- Riserless Well Intervention System (RWIS)
- Intervention Riser System (IRS)
- System Integrator

### Well Flow Management


Proficiently gathering valuable well and reservoir data, with the utmost regard for well-site safety and environmental impact



- Well Test
- Drill Stem Testing (DST)
- Tubing Conveyed Perforating (TCP)
- Fluids
- Pipeline and Flarestack

### Well Intervention and Integrity


Innovative well intervention applications to capture well data, ensure wellbore integrity and maintain production



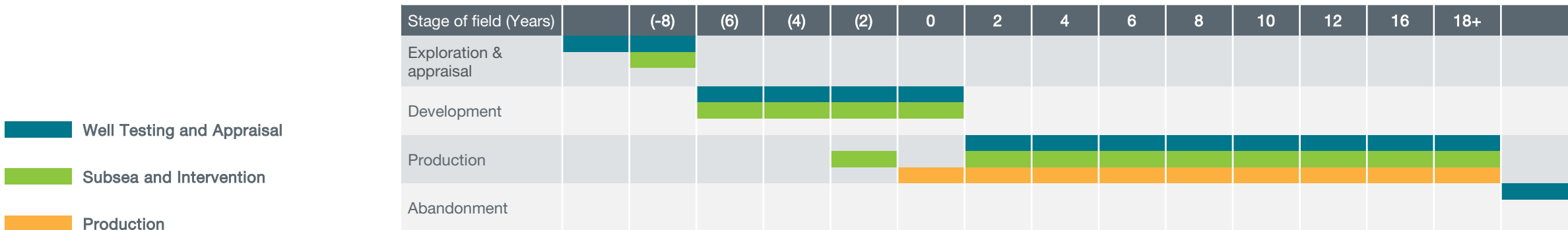
- Mechanical Wireline
- Cased Hole Applications
- Wireless Wells
- Galea™
- Permanent Downhole Monitoring (PDM)
- CoilHose
- Octopoda™ Intelligent Intervention

### Production Solutions

Fast-track, cost-effective, early field production, optimisation and enhancement systems



- Early production
- Offshore Production Units
- Enhancement Systems
- Facility Upgrades
- Operations and Maintenance
- Water treatment
- Meters



# Well Testing and Appraisal

The sector's most proficient provider of well flow management solutions.

We provide global, comprehensive well flow management systems to proficiently gather valuable well and reservoir data, with the utmost regard for well-site safety and environmental impact.

## Strategic advancements

Adapted to post 2014 decline in E&A activity by increasing focus on brownfield production related opportunities.

Further advancements planned via:

- Maintain market leadership in demanding environments
- Providing fast track production optimisation solutions
- Progressing decarbonisation and environmental activity

## Strengths

Fully integrated well clean-up and exploration and appraisal services including:

- Largest global fleet of innovative, reliable flow management equipment
- Specialists in demanding high rate gas flow back and HT/HP systems
- Real-time data acquisition and metering improving efficiency and lowering operator service cost
- Fluid Sampling and analysis at the wellsite
- Efficient sand, solids and water management capability
- Fast track extended well tests



Key stat  
Addressable market

**\$1.5bn**

Key stat  
Well test

**10,000**

Key stat  
Asset fleet packages

**~170**

# Subsea

Market leading technology provider, ensuring safe well access and optimised production.

Providing the most reliable, efficient and cost effective well access system throughout the lifecycle of the well.

## Strategic advancements

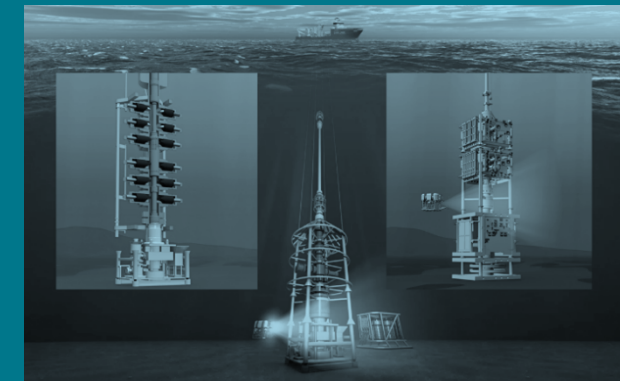
Leading market share in subsea safety systems due to technology position allied with high level of service delivery

Further advancements planned via:

- Full system provisions – scope extension on core safety system service
- Introduction of subsea well access services

## Strengths

- Leading provider of Subsea Test Tree Assemblies
- Gain reliable access to your subsea wells
- A complete subsea well access portfolio including Light Well Intervention capability
- Safely manage the containment of hydrocarbons between the seafloor and the rig or vessel
- Dual barrier isolation, disconnect capability and cut and seal technology
- Maintain well integrity throughout the operational cycle
- Maximises efficiency



Key stat  
Expro market share in subsea safety systems

~57%

Key stat  
Largest global subsea landing string fleet

~75 strings

Key stat  
Subsea operations

2,500+

# Well Intervention and Integrity

A leading global provider of well intervention services

A safer and smarter well integrity and intervention solutions partner.

## Strategic advancements

Strategically captured selected high volume slickline contracts

Further advancements planned via:

- Continued development of technology services onto strong slickline foundations
- Extension of intervention services including autonomous slickline
- Well integrity solutions

## Strengths

- World's largest independent wireline service supplier
- Approximately 12,000 wireline runs in our customer's wells each month
- Established track record across all aspects of well intervention
- Our well intervention solutions span across well integrity, EOR, production monitoring, perforation and unconventional, pipe recovery and slickline mechanical services
- Development of leading-edge technologies needed to optimise performance from your wells



Key stat  
Expro market share

10%

Key stat  
Asset fleet packages

~240

Key stat  
Runs per month

12,000

# Production

A global leader of fast track and Modular Production Systems delivering more than 500mm boe from over 150 projects globally during the last 45+ years

From appraisal through to mature field production, optimisation and enhancement, we provide cost effective systems

## Strategic advancements

Leading provider of fast track modular early production and enhancement solutions.

Further advancements planned via:

- Delivery of cost effective early production systems to enable clients to achieve early monetisation of, and /or fully appraise their reserves
- Growth, both geographically and technologically of modular production solutions, which optimise production in brownfield environments

## Strengths

- Provide customers with Early Production Facilities to accelerate production / proceeds from new and marginal oil and gas fields
- Provide customers with Enhanced Production Solutions to optimise performance form mature / brownfields
- Our global footprint and extensive experience provides a strong foundation to deliver cost effective solutions that optimise production across the lifecycle of your asset, in over 50 countries



| Key stat           | Key stat           | Key stat                   |
|--------------------|--------------------|----------------------------|
| Addressable market | Expro market share | Projects executed globally |
| <b>\$700m</b>      | <b>11%</b>         | <b>150+</b>                |

# Our new technology

# Discover what's possible

Inspire. Create. Differentiate.

Innovation is important to us.

Our determined commitment to product portfolio enhancement, increasing sophistication in technology and the application of resources and IP development will ensure that Expro goes beyond merely meeting customer needs, but addressing our impact on the future. We want to be more relevant in today's world.

We're open. We are a business that thinks ahead. We're bold. And we're direct. It's a way of working that helps you address your critical energy challenges of today.

Changing for the better.





# Galea™ Autonomous Well Intervention System

**Ensuring production continues and is optimised for the well conditions**

A fully automated, efficient and cost effective solution to keep your well producing while reducing the environmental impact of your operations

- Reduction in deferred production
- Reduction in operational overheads
- Wax scraping intervals defined by well conditions rather than availability of wireline crew and equipment
- Reduced HSE exposure for personnel due to reduced time spent at well site
- Reduced environmental impact to field and surrounding areas
- Allows production to continue in remote locations or areas that are inaccessible to wireline crews at certain times of the year
- Potential for 24/7 monitoring from anywhere in the world
- Elimination of accidental wire breaks



# CoilHose Light Well Circulation System

**Delivering a safe, unique, versatile and cost effective service to create low operational resource requirements solution**

The CoilHose Light Well Circulation System (LWCS) provides a lower cost, more efficient alternative to traditional coiled tubing systems.

- Field proven technology with more than 100 runs
- Minimises the loss of hydrocarbon production
- Reduces overall cost of intervention
- Compact with relatively small footprint
- Mobile and flexible set-up
- Lower number of personnel required (4-6 multi-skilled crew)
- Can be rapidly deployed universally (3-4 hours) on lightweight topsides with limited deck space



# Annulus Intervention System – Octopoda™

Providing remediation of well integrity issues without the use of a workover rig

A truly unique service to assure well integrity and enhance production

- Innovative and unique system to access well annuli
- Enables inspection and repair of annulus integrity issues
- Rapid mobilisation
- Modifications for different wells
- Increased oil recovery through revitalisation of shut in wells
- Environmental and groundwater protection

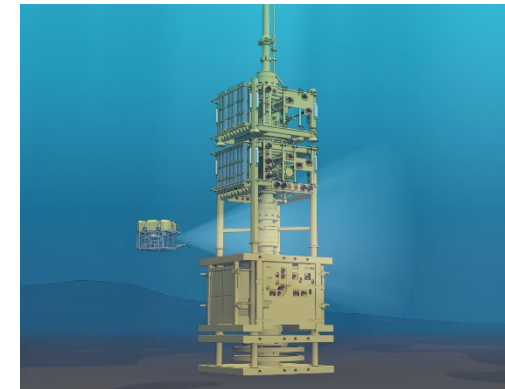


# Light Well Intervention

**Expro are seen as best in class as a well access service provider**

**Increases efficiency by removing the need to deploy marine riser and Subsea BOP**

- Our Intervention Riser System safely establishes and maintains well access throughout riser to surface operations, replicating the functionality of the blowout preventer
- Deployed from client rig or vessel with derrick
- Ability to deploy heavy duty intervention i.e. CT and all other intervention tools
- Compact and lightweight system
- Rapid deployment time
- Rated to 10,000psi and 3,000m water depths
- Xmas Tree controls supplied as part of package, negating the requirement for additional 3<sup>rd</sup> parties
- Can interface with both horizontal and vertical Xmas Tree systems

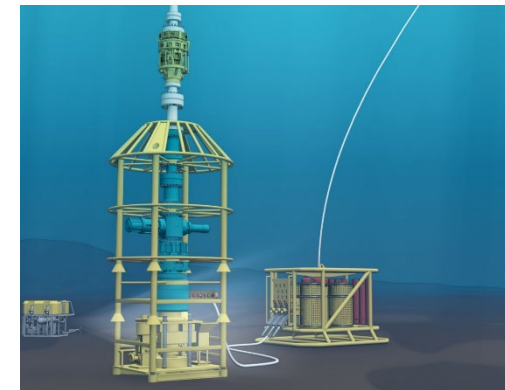


# Riserless Well Intervention System

**Riserless well intervention system provides a safe and efficient method of gaining well access**

More than 70% of all life of well intervention requirements can be performed with a RWI system

- The Riserless Well Intervention is a technique used to safely, efficiently and cost effectively enter subsea wells to perform well intervention tasks
- Deployed from a monohull vessel
- The system utilises qualified and field proven components and technology
- Wire through water well intervention
- The system is capable of covering operations in water depths ranging from 70m to 3000m
- Low cost, rapid deployment and operation
- Deployment capability of slickline, E-Line and Coilhose



# Our regions

# Asia



Safety is at the heart of everything we do. We listen to our customers and deliver bespoke services.

Mrinal Vohra,  
Vice President

## Key stat

Lost Time Injury Free (LTIF)

12M exposure hrs

## Key stat

Positive Intervention Good Behaviour Cards  
(Average per person)

34

## What makes us different?

- We continuously strive to bring new service offerings to our clients
- Within Expro our region performs the highest amount of DST/TCP jobs
- We are praised by our clients throughout the region for continuously delivering impeccable service quality
- We bring a tailored solution to our clients to ensure their objectives and expectations are surpassed
- We recognise that developing our people is fundamental for delivery of our client's objectives with quality and safety at the forefront of each step
- We are our client's first choice for services such as deep water subsea landing strings and providing high rate gas testing solutions. Our delivery and track record speaks for itself
- We bring perspective to our clients problems, in doing so we have gained respect and have many Engineers working directly with our clients



### Operational Areas

Australia, New Zealand, Brunei, China, India, Indonesia, Malaysia, Philippines, PNG, Thailand, Vietnam, Cambodia, Vietnam, Japan, Korea, Bangladesh, Myanmar

### Employees

885+

### Locations

22

### Countries

17

### Clients include

Shell, Inpex, Exxon, Chevron, Cooper, ENI, Woodside, Pertamina, ONGC, Total, Petronas, PTTEP, CNOOC

# Europe & Sub Saharan Africa (ESSA)



The safety and quality standards of our people enable Expro to deliver the best services taking genuine pride in what we achieve

**Colin Mackenzie**  
Vice President

## Key stat

Customer satisfaction rating

**94%**

## Key stat

Recipient of the RoSPA order of distinction for safety performance 2020

## What makes us different?

- We turn up differently, demonstrating a clear focus on our customers and we are driven to deliver a quality solution
- We see safety performance at the heart of our success
- We have a willingness to work with others in a collaborative manner to develop solutions
- We offer solutions to your challenge, we offer bundled service offerings matching our customer requirements
- We drive continual improvement throughout our operations
- We deliver a comprehensive portfolio of products and services
- We are well established in a broad range of countries where we have developed an extensive track record
- We introduce new technologies and promote innovation through the organisation



### Operational Areas

UK, Kazakhstan, Norway, Netherlands, Azerbaijan, Russia, France, Germany, Romania, Sweden, Ukraine, Senegal, Ivory Coast, Ghana, Nigeria, Cameroon, Chad, Gabon, Congo, DRC, Angola, South Africa, Mozambique, Tanzania, Kenya.

### Employees

**1,510+**

### Locations

**32**

### Countries

**26**

### Clients include

BP, ConocoPhillips, Eni, Equinor, ExxonMobil, Petronas, Repsol Sinopec, Total, Tullow, Wintershall



# Middle East and North Africa (MENA)



We are a local but international partner to our customers, and when the job is difficult we are the preferred choice.

**Riccardo Muttoni,**  
Vice President

## Key stat

Oil and gas production through our production packages

**130+ mbopd**  
**200+ mmscfd**

## Key stat

Customer satisfaction rating

**93%**

## Key stat

Positive Intervention Good Behaviour Cards

**4000+**

## What makes us different?

- We embrace partnership with customers through our focus on their challenges and we support them by developing bespoke solutions
- We are recognised by delivering quality services against our commitments to our customers
- We are different from our competitors. Our people differentiate us, they are motivated and supported by our organisation
- We are the pioneer region for Sonar Meters and Production Optimisation; offering an array of different unique applications to our customers in production domain
- Expro MENA has been successful in creating collaborative business with several partners, including some of our major competitors, capitalising on our technical knowhow and our local market knowledge
- Our fast track, yet efficient delivery, is a key to our success in a very demanding and challenging market



### Operational Areas

Algeria, Saudi Arabia, Egypt, Qatar, United Arab Emirates, Iraq, Libya, Oman, Kuwait

### Employees

**930+**

### Locations

**10**

### Countries

**9**

### Clients include

Sonatrach, Saudi Aramco, ADNOC, Total, NOC, BP, Apache, Eni, Shell, Qarun, Khalda, Bapetco, Agiba and MOG

# North and Latin America (NLA)



Our clients are our greatest partnership. We must value all of them. We continuously seek innovative solutions that tailor to their individual needs.

Jean Moritz,  
Vice President

## Key stat

Customer satisfaction rating

97%

## Key stat

Lost Time Injury Free (LTIF)

3+ years

## What makes us different?

- Expro has a well established track record with over 40 years of experience
- Our Brazil business has been built on a long-term relationship with local NOC to which we have been supplying services on a continuous basis since 1992
- Our Canada and Gulf of Mexico business is predominantly deepwater and engages a breath of IOC and independent exploration and production companies
- Our North America land business is currently driven by a breath of activity from upstream Shale gas and tight oil to ongoing production to Midstream Pipeline Services
- We are recognised for our safety and service quality



### Operational Areas

US, Canada, Trinidad & Tobago, Argentina, Bolivia, Brazil, Colombia, Guyana, Peru, Mexico, Suriname

### Employees

765+

### Locations

24

### Countries

11

### Clients include

Chevron, Conoco, Equinor, Anadarko, BP, Exxon, Kinder Morgan, Enterprise, Chesapeake, EOG, Sawtooth, Williams, ONEOK & Campos

# We are Expro

We are the future engineers.



**We are the well flow optimisation expert, who will safely access, optimise flow, capture data and provide integrity and assurance across the lifecycle of your well.**

Whether working for customers, the company or with colleagues, we are open, transparent and honest, allowing us to have shared mutual confidence and understanding, giving you flexible and creative answers to problems. We engineer the answers of tomorrow.

# FUTURE ENGINEERS™



People are the most important.  
And every Expro person engineers  
our future. We are the drivers of our  
methodologies. We are confident.  
We can draw out the right answers  
which attract the right customers.



**EXPRO**