



Wear Mitigator and Torque Reducer

Key Benefits and Features

- Limits casing and drill string wear and reduces torque
- Not dependent on stand length or derrick height limitations
- Does not extend the length of the original drill string
- Eliminates potential for marking pipe and de-rating drill string
- Robust design, durable for open hole applications
- Compatible with wired pipe applications
- Requires fewer tools than other similar solutions on the market



Use in the following applications:

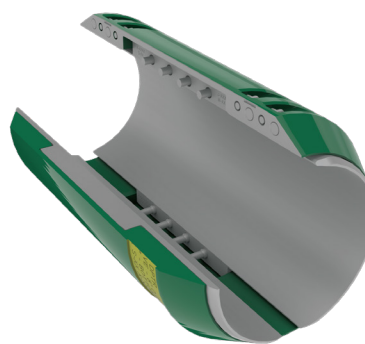
Deepwater and ultra-deepwater

Shelf

Land

The Frank's International AEGIS™ Tubular Protector offers a powerful solution to the excessive tubular wear and high torque experienced in today's complex and demanding drilling applications. A proprietary Frank's technology, it was developed to address the challenges of extended reach drilling environments and the dynamic forces of aggressive open hole operations.

The AEGIS™ Tubular Protector is designed and manufactured to withstand the most difficult downhole environments, with an axial holding force of 30,000 lbs. and a lateral force of 5,000 lbs. It attaches to the outside diameter of the drill pipe. Inner steel clamps remain stationary on the drill pipe tube body, while the outer sleeve halves are coupled together around the inner clamps. During operation, the inner clamps rotate with the drill string, while the outer sleeve remains stationary against the sides of the wellbore. This limits the contact between the wellbore wall and the drill string, isolating any wear to the outer sleeve of the AEGIS™ Tubular Protector while protecting the inner clamps.



franksinternational.com

For more information call 1-800-833-7265

©2020 Frank's International. All Rights Reserved. Notice: this product is protected by one or more patents. For more information regarding Frank's International's patents, please go to: www.franksinternational.com/patents/. Frank's International products and services are subject to the Company's standard terms and conditions, available on request. Unless noted otherwise, trademarks and service marks herein are the property of Frank's International. Product and service information and/or specifications are subject to change without notice. For more information please contact an authorized Frank's International representative.

Specifications	5 1/2-inch	5 7/8-inch
Drill Pipe Size	5-1/2"	5-7/8"
Max Sleeve OD	7-3/4"	8"
Overall Length	15"	15"
Sleeve Gauge Length	11-5/8"	11-3/4"
Overall Volume	267 inches ³	273 inches ³
Overall Weight	76 pounds	78 pounds
Axial Load Rating ¹	30,000 pounds	30,000 pounds
Continuous Side Load Rating	5,000 pounds	5,000 pounds
Intermittent Side Load Rating	15,000 pounds	15,000 pounds
Cross Section Area	23.4 inches ²	23.2 inches ²
Total Flow Areas		
9-5/8" x 53.5 ppf CSG	10.0 inches ²	6.9 inches ²
10-3/4" x 55.5 ppf CSG	27.6 inches ²	24.5 inches ²
13-3/8" x 72.0 ppf CSG	72.6 inches ²	69.5 inches ²
Inner Clamp Material	AISI 4140 Carbon Steel with Features & Advanced Coatings for Low-Friction Performance and Wear Resistance	
Outer Sleeve Material	AISI 1026 Carbon Steel with Features & Advanced Coatings for Low-Friction Performance and Wear Resistance while Ensuring the Outer Sleeve Cannot Induce Damage or Wear into the Casing	
Max. Temp.	220°F (105°C)	220°F (105°C)
Use in the following applications:	Deepwater and ultra-deepwater	Shelf
		Land